

## TAXONOMY AND NOMENCLATURE

## A key and checklist to the Neotropical forensically important “Little House Flies” (Diptera: Fanniidae)

Diana Grisales<sup>1\*</sup>, Melise C. Lecheta<sup>3</sup>, Fernando H. Aballay<sup>2</sup> & Claudio J.B. de Carvalho<sup>3</sup>

<sup>1</sup>Grupo de Entomologia, Instituto de Biología, Universidad de Antioquia, Medellín, Colombia.

<sup>2</sup>Laboratorio de Entomología, IADIZA, CCT, CONICET. Avenida Adrian Ruiz Leal, CP 5500, Mendoza, Argentina.

<sup>3</sup>Departamento de Zoología, Universidade Federal do Paraná. Caixa Postal 19020, 81531-980 Curitiba, PR, Brazil.

\*Corresponding author: E-mail: [ochoa310@gmail.com](mailto:ochoa310@gmail.com)

**ABSTRACT.** Fanniidae (Insecta: Diptera) is a relatively small family (ca. 350 spp.) with five genera, of which *Fannia* Robineau-Desvoidy, 1830 and *Euryomma* Stein, 1899 have Neotropical distributions. Some of these species are almost always found in forensic studies. Forensically relevant species have been neglected, despite recent forensic studies that suggest their importance for estimating post-mortem interval (PMI). Thus, current and updated keys to identify adults or larvae on carcasses are unavailable for the most important species. While immature stages are important in estimating PMI, evidence suggests that adults (Fanniidae as well as other families) may also be useful for this purpose. Here we provide a key to males of the species of Fanniidae (found on corpses and other decomposing organic matter) with a checklist of species that have been used in forensics in the Neotropical region. The key comprises all 38 species of *Fannia* and *Euryomma* that have already been successfully used in forensics, and species that are potentially useful for estimating PMI. These records were found after reviews of the literature and data from entomological collections. Photographs and illustrations of the main characters in the key are provided.

**KEY WORDS.** *Fannia*, *Euryomma*, forensic entomology, PMI.

Fanniidae (Diptera: Calyptratae) is a small family comprising five genera, two of which (*Fannia* Robineau-Desvoidy, 1830 and *Euryomma* Stein, 1899) are found in the Neotropical region. In this region *Fannia* comprises ca 90 species (CARVALHO et al. 2003, COURI 2004, 2005, COURI & WINAGRASKI 2005, DOMÍNGUEZ 2007, DOMÍNGUEZ & ABALLAY 2008, WENDT & CARVALHO 2009, WENDT 2010, QUIROGA & DOMÍNGUEZ 2010, GRISALES et al. 2012b) and *Euryomma* has 17 species (WENDT & CARVALHO 2007, GRISALES et al. 2012a). Some of these species may be useful in forensic studies, especially to estimate the post-mortem interval (PMI) (QUIROGA & DOMÍNGUEZ 2010, GRISALES et al. 2012a, 2012b).

Other families of flies (Calliphoridae and Sarcophagidae) are most commonly used to indicate PMI. However, while the Fanniidae are less often used, many species are prevalent in decomposing carcasses and corpses (MATUSZEWSKI et al. 2010, 2011, ABALLAY et al. 2012a). Because they are less abundant in corpses than other families, identification of forensically relevant species in the Fanniidae has been neglected. A recent key to the most common forensic South American flies includes *Fannia* but with

only six species: *Fannia obscurinervis* (Stein, 1900), *Fannia trimaculata* (Stein, 1898), *Fannia pusio* (Wiedemann, 1830), *Fannia femoralis* (Stein, 1898), *F. punctipennis* Albuquerque, 1954, and *F. canicularis* (Linnaeus, 1761) (CARVALHO & MELLO-PATIU 2008). Yet, many new species of *Fannia* and *Euryomma* found on carcasses have been described (GRISALES et al. 2012a, 2012b, DOMÍNGUEZ & ABALLAY 2008, QUIROGA & DOMÍNGUEZ 2010). Also, another key to newly described species of *Euryomma* from Colombia is the first to mention their potential for forensic importance, yet all species were collected on decomposing animal flesh (GRISALES et al. 2012a). An additional key to species on decomposing flesh included 13 new species of *Fannia* (GRISALES et al. 2012b). Thus, clearly these two genera may provide useful forensic information (WOLFF et al. 2001, CENTENO et al. 2002, IANNACONE 2003, PÉREZ et al. 2005, ABALLAY et al. 2008, 2012a, 2012b, BATTAN HORENSTEIN et al. 2010, PATTUCCI et al. 2011).

Immature stages of insects are commonly used in the forensic study of PMI, while adults of some species may also provide useful complementary information. In most necropha-

gous species, adults tend to arrive at carcasses after a predictable PMI (MATUSZEWSKI et al. 2010, MICHAUD & MOREAU 2009), hence their potential usefulness. These adults also avoid the confusion that may arise due to predation of some fly larvae on others, which may obfuscate the exact time that the first eggs were laid (ANDRADE et al. 2002, SHIAO & YEH 2008). In South America, during most of the forensic work involving Fanniidae, adults are collected with little attention given to the larvae. Perhaps this is not surprising, as among the newly described species of Fanniidae associated with decomposing flesh, only the third instar larvae of *Fannia yunguensis* has been described (QUIROGA & DOMÍNGUEZ 2010).

We begin to fill this gap in the forensic use of adult necrophagous Fanniidae in South America with this key as a tool that will permit identification using the sometimes difficult diagnostic characters of adult males. The male terminalia are very important because they allow the identification of species when the external structures are morphologically conserved and thus uninformative, especially among *Euryomma* and some *Fannia*. In addition to the key to identify adult males we provide a checklist of species with updated distributions.

## MATERIAL AND METHODS

Diagnostic characters used in the key were based on original descriptions and examination of specimens from the following collections: DZUP – Coleção de Entomologia Pe. Jesus Santiago Moure, Curitiba, Brazil (Claudio J.B. de Carvalho), CEUA – Colección Entomológica Universidad de Antioquia, Medellín, Colombia (Marta Wolff), IADIZA – Colección Entomológica, Instituto Argentino de Investigaciones de Zonas Áridas, Mendoza, Argentina (Sergio A. Roig).

In the key we followed the morphological terminology of MCALPINE (1981), STUCKENBERG (1999), WENDT & CARVALHO (2009) and GRISALES et al. (2012a, 2012b).

We include in this study all species reported as associated to decomposing bodies (human or pig), and traps baited with organic decomposing matter (fish, chicken viscera, beef and pork) from available literature as well as from collected material. Forensic references and geographical distributions of the species on the checklist were also obtained from available literature and revision of collections.

We use the following abbreviations: Head: (fr) frontal setae, (orb) orbital setae. Thorax: (acr) serial acrostichal setae, (dc) serial dorsocentral setae, (pra) pre-alar seta. Wings: (C): costal vein. Legs: (ad) anterodorsal seta, (av) anteroventral seta, (p) posterior seta, (pv) posteroventral seta, (v) ventral seta.

A Leica DFC 500 camera was mounted on a Leica MZ16 stereomicroscope from the Rede Paranaense de Coleções Biológicas (Taxonline) to take the photographs, which were assembled using the program Auto-Montage Pro (Syncroscopy). Some of the illustrations presented here appeared previously in GRISALES et al. (2012a, 2012b).

## RESULTS AND DISCUSSION

Six species of Fanniidae were identified by CARVALHO & MELLO-PATIU (2008) as the most common forensic species in South America: *F. obscurinervis*, *F. trimaculata*, *F. pusio*, *F. femoralis*, *F. punctipennis*, and *F. canicularis*. Based on our review of the literature and insect collections, we list a total of 38 species of Fanniidae of actual or potential forensic importance (that may be associated with carcasses or with decomposing organic matter) in South America, of which 29 are in *Fannia* and nine in *Euryomma* (see Checklist).

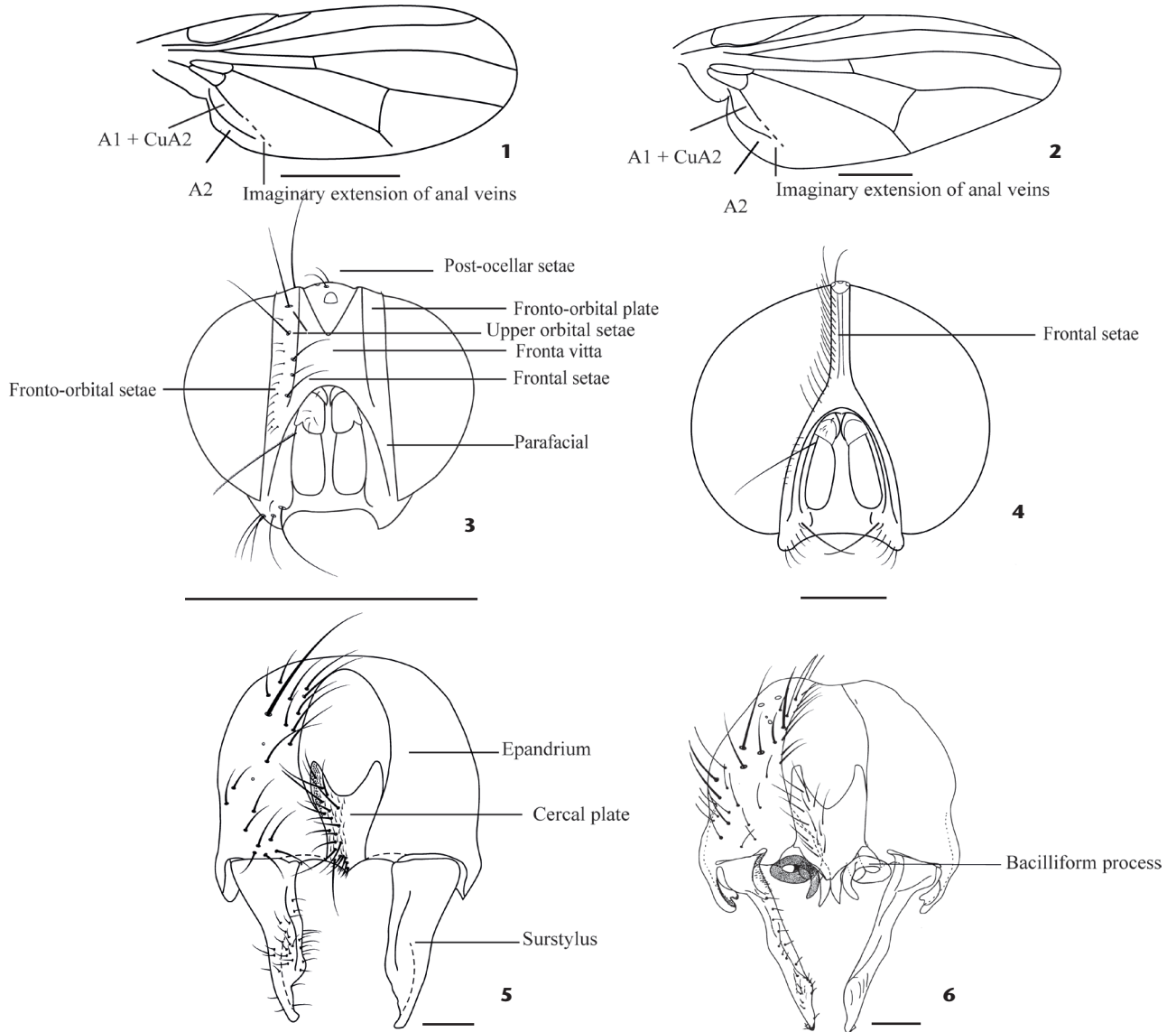
The Fanniidae included here were collected as adults because it is rare to find larval stages in collections, although a few were found. Immature stages were described or illustrated for only eight species (Table 1). Biological cycles and immature stages are unknown for the remaining South American species. Thus, further study of larvae is encouraged.

### Identification key to Neotropical genera of Fanniidae (adult males)

1. Vein A2 slightly curved, (Fig. 1). Upper orbital setae usually present (Fig. 3). First presutural dorsocentral setae less than half the length of second. Bacilliform process absent (Fig. 5). Dichoptic (Fig. 3)..... *Euryomma* Stein
- 1'. Vein A2 strongly curved, (Fig. 2). Orbital setae absent (except in *F. canicularis* (Fig. 4). First presutural dorsocentral seta developed, longer than half the length of the second setae. Bacilliform process usually present (Fig. 6). Usually holoptic (Fig. 4) ..... *Fannia* Robineau-Desvoidy

### Identification key to species of *Euryomma* (males)

1. Scutum with vittae (Fig. 7).....2
- 1'. Scutum without vittae (Fig. 8) *E. peregrinum* (Meigen, 1826)
2. Scutum with five vittae following *acr* and *dc* (Fig. 7) .....3
- 2'. Scutum with three vittae following *acr* and *dc* (Fig. 9).....5
3. Wing brownish, darkened in apical third between C and apical half of R<sub>2+3</sub> (Fig. 10), haltere yellowish (dark basally or not), frontal vitta dark brown .....4
- 3'. Wing yellowish, haltere yellowish, frontal vitta orange-red with apical margins reddish (Fig. 11) .....  
*E. cornuatum* Grisales, Wolff & Carvalho
4. Length of postpedicel 2.5 times the length of pedicel. Terminalia: epandrium has few, long setae, surstylus narrows apically, with few short setae on apical half, cercal plate setulose and acute apically (Fig. 13).....  
*E. uwa* Grisales, Wolff & Carvalho
- 4'. Length of postpedicel 3.5 times the length of pedicel. Terminalia: epandrium has short setae, particularly on basal half, surstylus triangular, short, with few short setae on apex and inner surface, cercal plate slightly setulose and round apically (Fig. 14) .....  
*E. guane* Grisales, Wolff & Carvalho

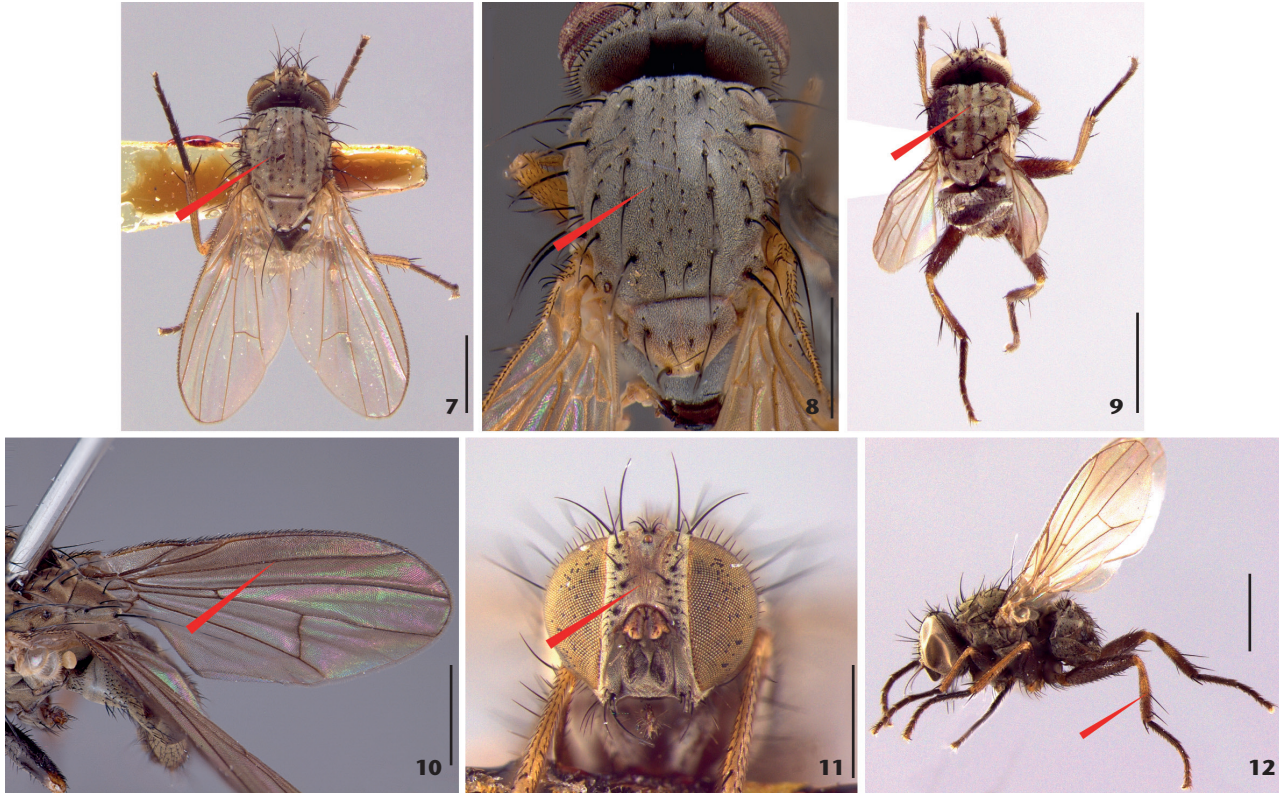


Figures 1-6. *Euryomma* and *Fannia*: (1) *E. muisca*, wing, dorsal view; (2) *Fannia* sp., wing, dorsal view; (3) *E. cornuatum*, head, male, frontal view; (4) *Fannia* sp., head, male, frontal view; (5) *E. uwa*, epandrium, male, dorsal view; (6) *F. grandis*, epandrium, male, dorsal view. Scale bars: 1-4 = 1.0 mm, 5-6 = 0.1 mm.

Table 1. Information on immature stages of Fanniidae of forensic importance in South America.

| Species  | Described or illustrated stages | References  |
|--|---------------------------------|---|
| <i>Euryomma peregrinum</i> (Meigen, 1826)          | Larva III                       | DOMÍNGUEZ & PONT 2014                                 |
| <i>Fannia albitarsis</i> Stein, 1911               | Egg, larva*                     | ALBUQUERQUE et al. 1981, DOMÍNGUEZ & PONT 2014        |
| <i>Fannia canicularis</i> (Linnaeus, 1761)         | Egg, larva III                  | ROBACK 1951, CHILLCOTT 1961, DOMÍNGUEZ & PONT 2014    |
| <i>Fannia femoralis</i> (Stein, 1898)              | Larva III                       | CHILLCOTT 1961  |
| <i>Fannia pusio</i> (Wiedemann, 1830)              | Egg, Larva I, II, III, puparium | CHILLCOTT 1961, COURI 1992                            |
| <i>Fannia scalaris</i> (Fabricius, 1794)           | Larva III                       | CHILLCOTT 1961  |
| <i>Fannia trimaculata</i> (Stein, 1898)            | Egg, larva III, puparium        | ALBUQUERQUE 1945 <sup>1</sup> , COURI & CARVALHO 2005 |
| <i>Fannia yunguensis</i> Quiroga & Domínguez, 2010 | Larva III                       | QUIROGA & DOMÍNGUEZ 2010                              |

\*Instar not specified. <sup>1</sup>Here we treat the posterior leg as from *F. pusio*; however, COURI (1992) showed that some material in ALBUQUERQUE (1945) pertains to *F. pusio* and some to *F. trimaculata*.



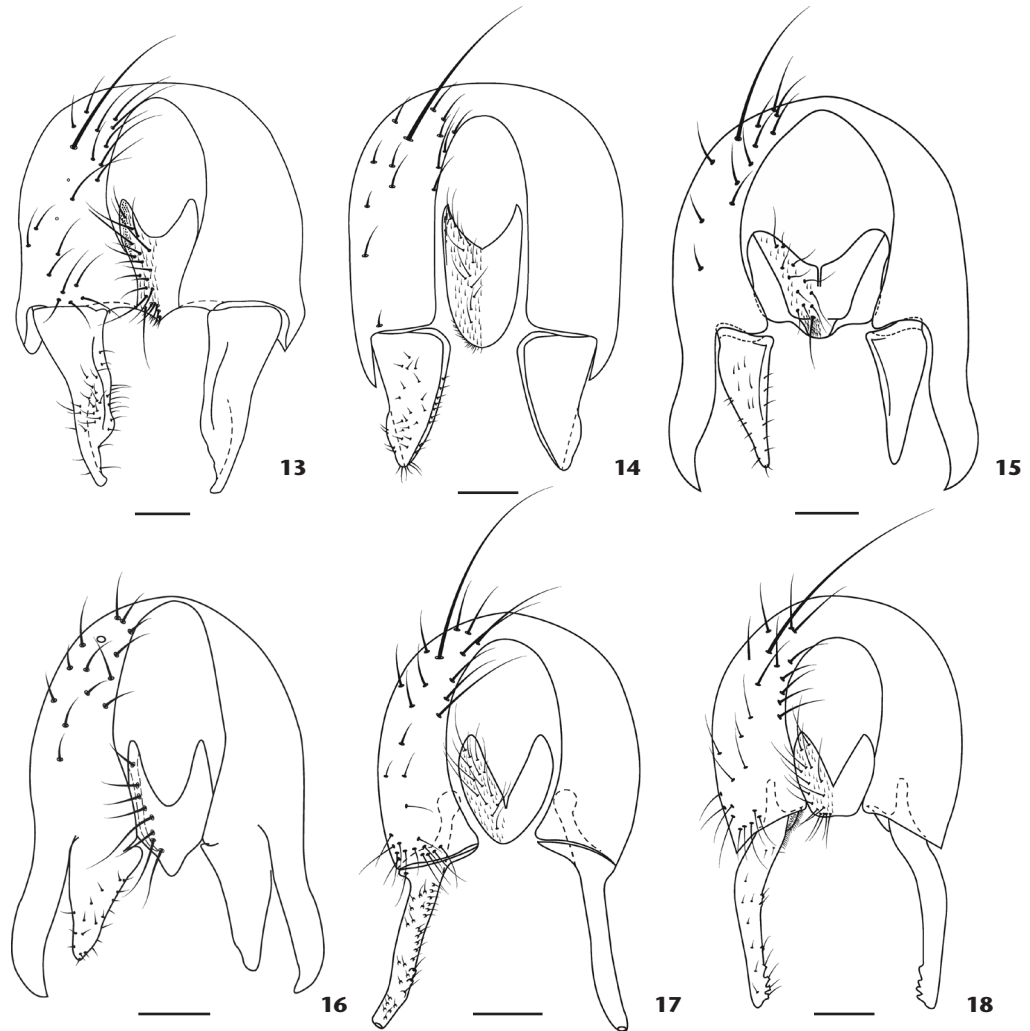
Figures 7-12. *Euryomma*, male: (7) *E. cornuatum*, dorsal view; (8) *E. peregrinum*, thorax, dorsal view; (9) *E. tahami*, dorsal view; (10) *E. guane*, wing, dorsal view; (11) *E. cornuatum*, head, frontal view; (12) *E. aburrae*, lateral view. Scale bars: 1.0 mm.

5. Scape and pedicel dark brown with silvery pilosity .....  
..... *E. carioca* Albuquerque
- 5'. Scape and pedicel yellow ..... 6
6. Hind tibia brown on apical half, yellow basally with a brown ring (Fig. 12), arista brown with basal third yellow. Terminalia: surstylus triangular (Fig. 15) ..... 7
- 6'. Hind tibia yellow, arista brown. Terminalia: surstylus long and narrow (Fig. 16) ..... 8
7. Dorsocentral vittae on scutum conspicuous and complete, middle vitta well defined, length of postpedicel 3.6 times length of pedicel. Terminalia: surstylus fused with epandrium, cercal plate strongly concave, pointed apically, with long curved setae (Fig. 15) .....  
..... *E. tahami* Grisales, Wolff & Carvalho
- 7'. Dorsocentral vittae on scutum relatively inconspicuous, well defined posteriorly to postsutural *dc*, length of postpedicel twice the length of pedicel. Terminalia: surstylus articulated with epandrium, cercal plate elongate, concave, slightly pointed apically, with short setae and apex strongly setose (Fig. 16) ..... *E. aburrae* Grisales, Wolff & Carvalho
8. Frontal vitta dark brown with apical margin yellowish, scape

- and pedicel brown with suture and apical margin yellowish, length of postpedicel 2.4 times the length of pedicel. Terminalia: surstylus straight with curved apex (Fig. 17), cercal plate fused on apical third (V-shaped), apex round (Fig. 17) ..... *E. chitarera* Grisales, Wolff & Carvalho
- 8'. Frontal vitta dark brown, scape and generally pedicel yellow, occasionally brownish, length of postpedicel 1.5 times the length of pedicel. Terminalia: surstylus curved (Fig. 18), cercal plate fused on apical half (V-shaped), apex square (Fig. 18) ..... *E. muisca* Grisales, Wolff & Carvalho

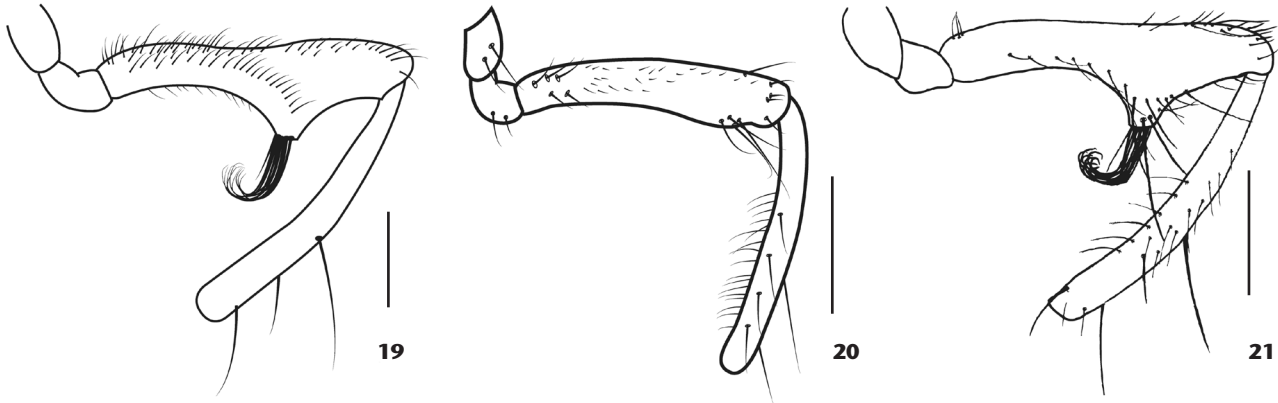
#### Identification key to species *Fannia* (males)

1. Hind coxa bare on posterior surface (Fig. 19) ..... 2
- 1'. Hind coxa with setae on posterior surface (Fig. 20) ..... 6
2. *acr* and *dc* following pattern common in *Fannia*, *acr* 2:3 or 3:3, *dc* 2:3 ..... 3
- 2'. *acr* and *dc* with different pattern, *acr* 0:0, *dc* 0:1 or 0:2 (Figs. 22, 23) ..... 5
3. Hind femur on ventral surface with preapical protuberance and large tuft of dense setae, forming a strong hook (Figs. 19, 21) ..... *F. grandis* Malloch

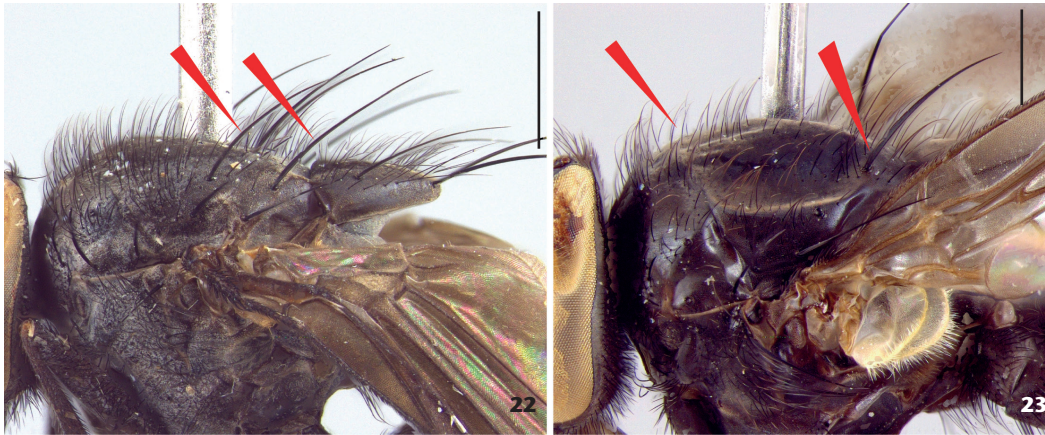


Figures 13-18. *Euryomma*, male, epandrium, cercal plate and surstyli, dorsal view: (13) *E. uwa*; (14) *E. guane*; (15) *E. tahami*; (16) *E. aburrae*; (17) *E. chitarera*; (18) *E. muisca*. Scale bars: 0.1 mm.

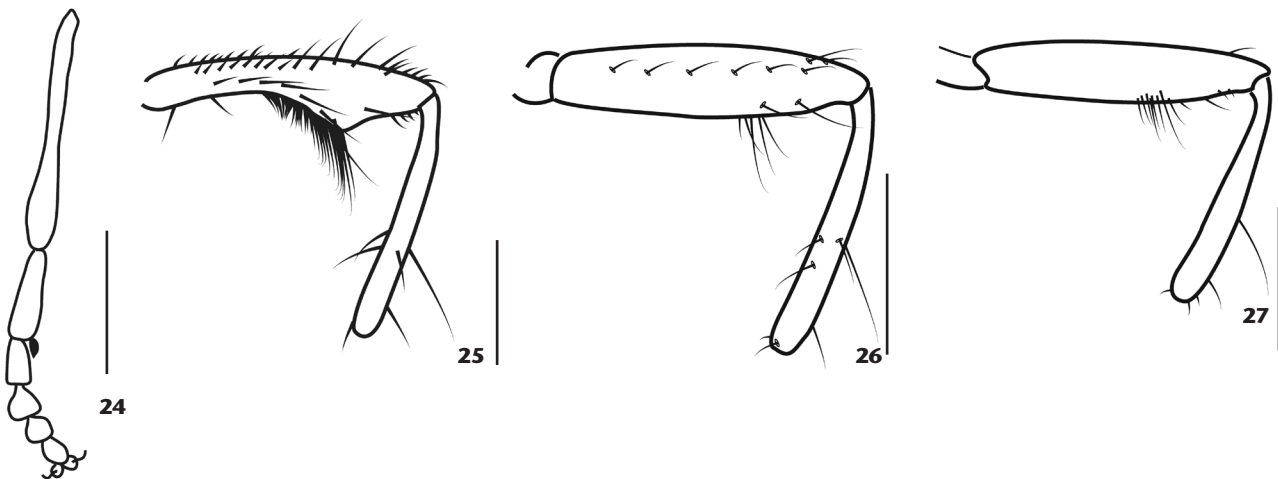
- 3'. Hind femur on ventral surface with or without preapical protuberance, if protuberance present, tuft of setae not as described above..... 4
- 4. Large, black, metallic blue background colour. Palpus dark brown, slightly clavate, fore tarsus with tarsomere 1 flat and wide, partially yellowish-white with broad leaf-like spine (Fig. 24), hind femur on ventral surface with strong protuberance with differentiated setae that form a tuft (Fig. 25) ..... *F. albitarsis* Stein, 1911
- 4'. Small, greyish background color. Palpus orange-yellow, slightly spatulate, fore tarsus with tarsomere 1 brown and normal in size, hind femur on ventral surface without protuberance and weak tuft of setae on posteroventral surface (Figs. 26, 27) ..... *F. fusconotata* (Rondani)
- 5. *Dc* 0:1 (Fig. 23), hind femur on anteroventral surface without protuberance on apical half, ventral surface with a set of differentiated setae on the median third (Fig. 28) ..... *F. quimbaya* Grisales, Wolff & Carvalho
- 5'. *Dc* 0:2 (Fig. 22), hind femur on anteroventral surface with slight protuberance on apical half, ventral surface with setae forming slight tuft with the *av* setae (Fig. 29) ..... *F. pijao* Grisales, Wolff & Carvalho
- 6. Mid coxa with strong hooked setae (Fig. 30), mid tibia with conspicuous preapical protuberance (Fig. 31) ..... *F. scalaris* (Fabricius, 1794)
- 6'. Mid coxa without strong hooked setae ..... 7
- 7. Abdomen black with lateral margins of tergites lighter in color, or abdomen grey and trimaculate (Fig. 32) ..... 8



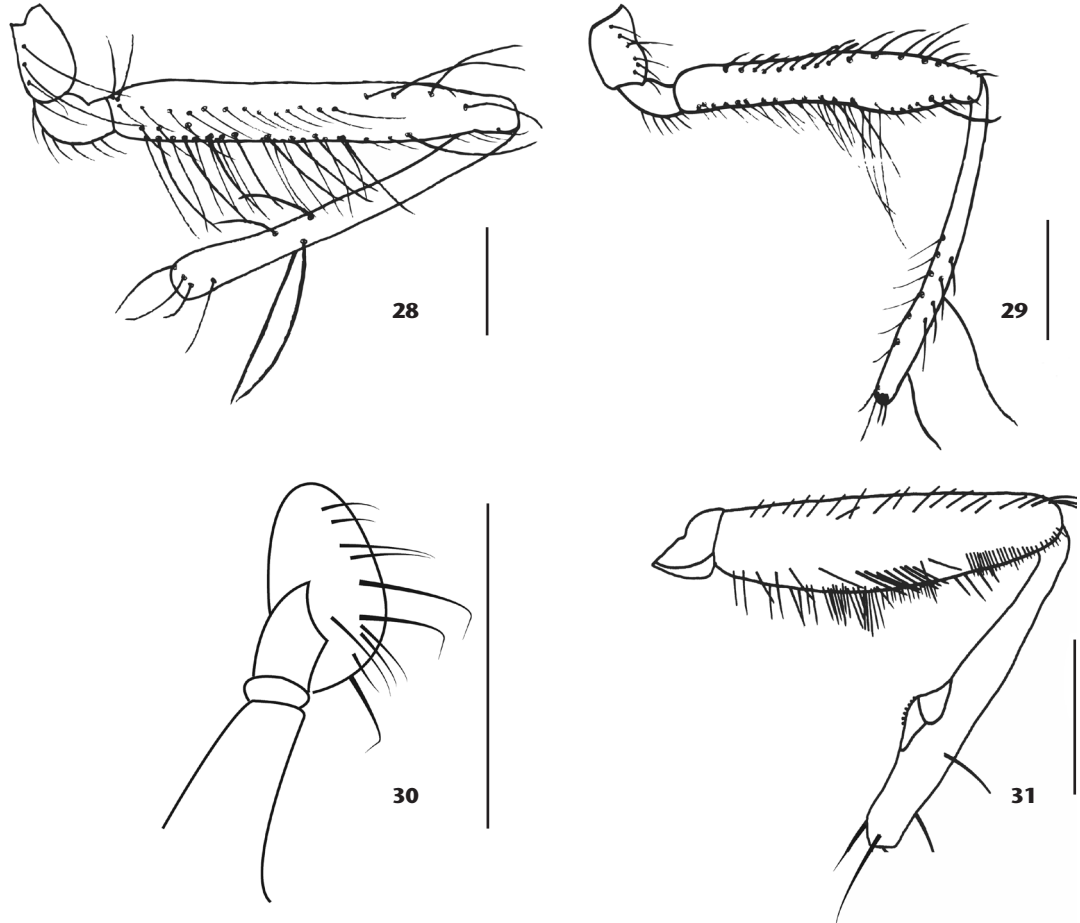
Figures 19-21. *Fannia*, male. (19) *F. grandis*, hind leg, posterior view; (20) *F. pusio*, hind leg, posterior view; (21) *F. grandis*, hind leg, anterior view. Scale bars: 1 mm.



Figures 22-23. *Fannia*, male. (22) *F. pijao*, thorax, lateral view; (23) *F. quimbaya*, thorax, lateral view. Scale bars: 1 mm.

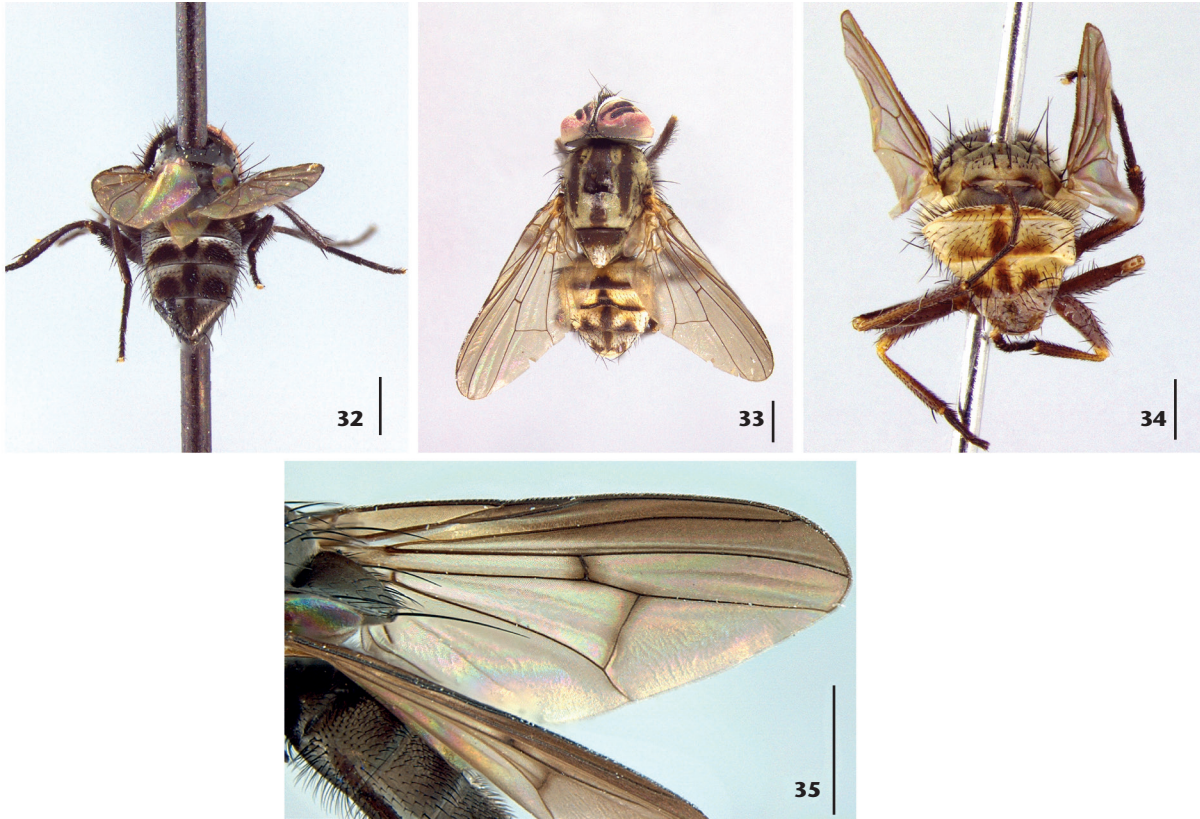


Figures 24-27. *Fannia*, male. (24) *F. albitarsis*, fore leg, fore tarsomere; (25) *F. albitarsis*, hind leg, anterior view; (26) *F. fusconotata*, hind leg, anterior view; (27) *F. fusconotata*, posterior view. Scale bars: 1 mm.

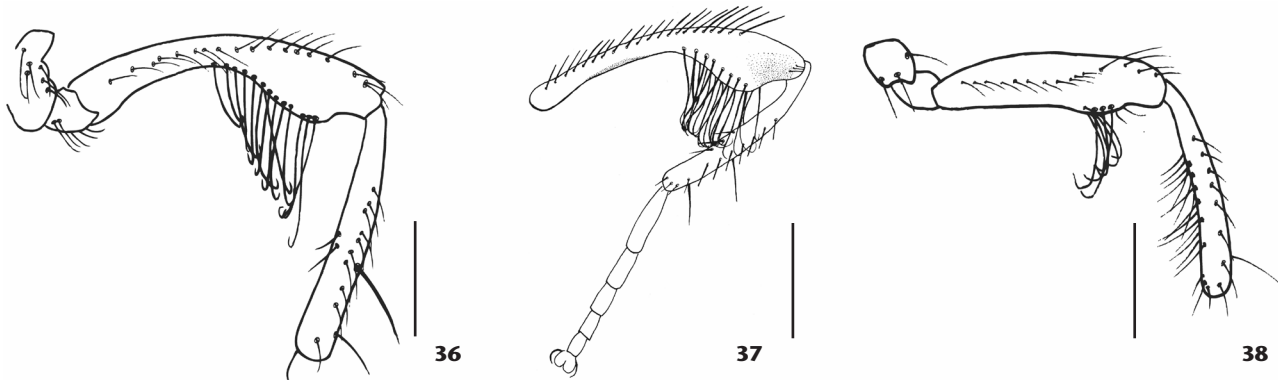


Figures 28-31. *Fannia*, male. (28) *F. quimbaya*, hind leg, anterior view; (29) *F. pijao*, hind leg, anterior view; (30) *F. scalaris*, mid tibia; (31) *F. scalaris*, mid leg, posterior view. Scale bars: 1 mm.

- |  |  |
|--|--|
| 7'. Abdomen with translucent-yellow tergites (Figs. 33, 34)..19  | 39, 40) .....12  |
| 8. Wing brownish with upper third darker and cross veins darker (Fig. 35), abdomen black, not trimaculate, parafacial bare..<br>..... <i>F. obscurinervis</i> (Stein)  | 11'. Hind femur with small preapical protuberance ..... 13   |
| 8'. Wing yellowish, abdomen grey trimaculate, parafacial with short setae, sometimes inconspicuous (sub-group <i>pusio</i> )...9   | 12. Hind femur with 3-4 longer bristles inserted on the swelling, hind tibia on anterodorsal surface with three median bristles (Fig. 39) ..... <i>F. femoralis</i> (Stein, 1898)  |
| 9. Hind femur strongly curved (Figs. 36, 37).....10  | 12'. Hind femur with many short bristles inserted on the swelling, hind tibia on anterodorsal surface with row of five setae (Fig. 40) ..... <i>F. snyderi</i> Seago   |
| 9'. Hind femur weakly curved or straight (Fig. 38) ..... 11  | 13. Hind femur with preapical ventral protuberance bearing strong setae .....14  |
| 10. Eighteen frontal setae, sparse setulae on eyes, wing yellowish, hind coxa with four setae on posterior margin, hind tibia with row of 9-13 anterior setae on apical half, abdomen trimaculate ..... <i>F. chibcha</i> Grisales, Wolff & Carvalho | 13'. Hind femur with preapical ventral protuberance without setae as described above .....15   |
| 10'. Eleven to twelve frontal setae, eyes bare, wing smoky, hind coxa with two setae on posterior margin, hind tibia with row of 8-9 setae on anterior surface, abdomen black .....<br>..... <i>F. yunguensis</i> Quiroga & Dominguez, 2010          | 14. Hind tibia with 1-2 rows of long setae on ventral surface (Fig. 38), hind femur on ventral surface with preapical protuberance, anteroventral and posteroventral surfaces with long and curved setae on the protuberance (Fig. 38, 42).....<br>..... <i>F. pusio</i> (Wiedemann, 1830) |
| 11. Hind femur with conspicuous preapical protuberance (Figs.  |  |



Figures 32-35. *Fannia*, male. (32) *F. pusio*, abdomen, posterior view; (33) *F. grandis*, dorsal view; (34) *F. katiis*, posterior view; (35) *F. obscurinervis*, wing, dorsal view. Scale bars: 1 mm.

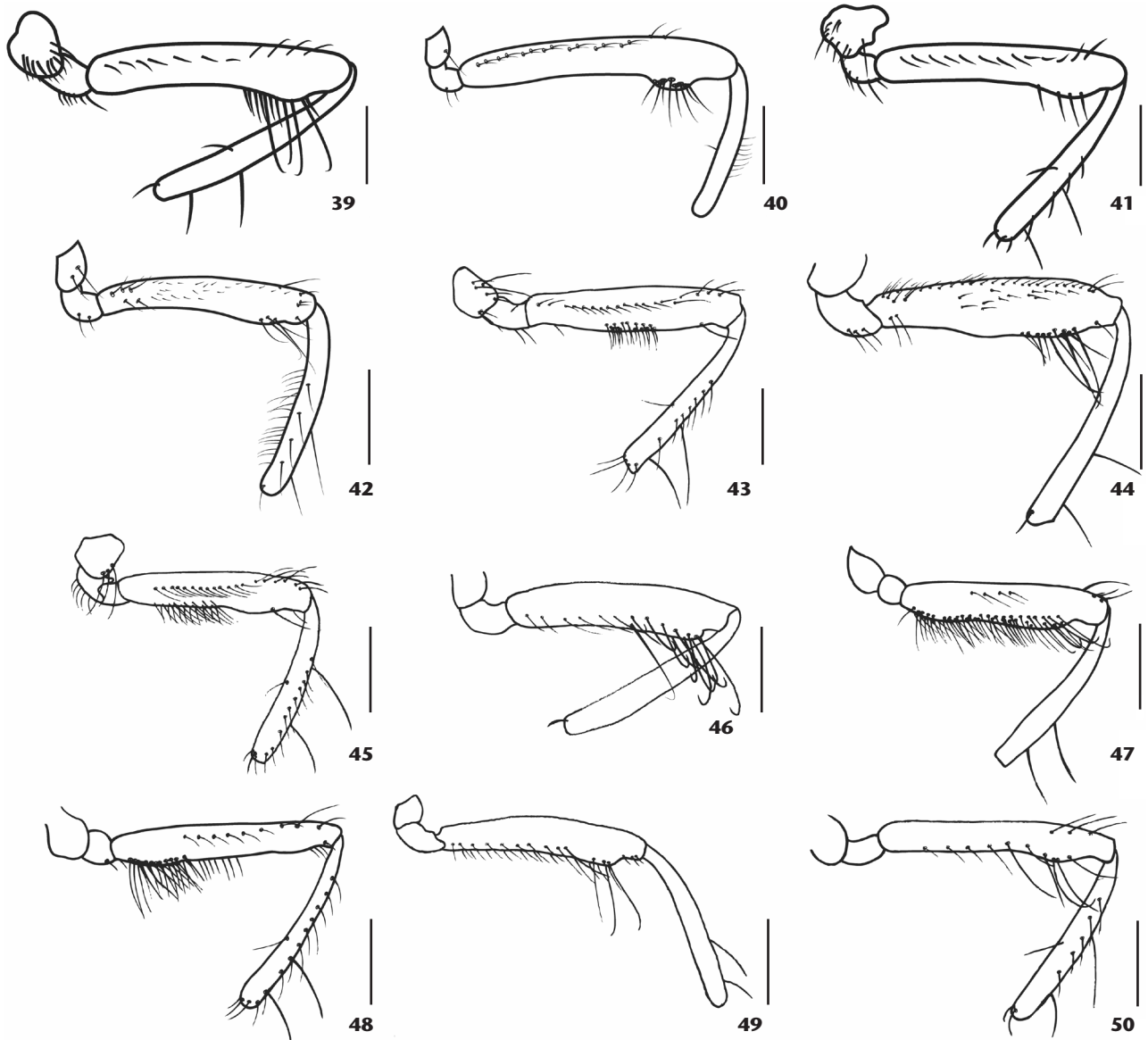


Figures 36-38. *Fannia*, male. (36) *F. chibcha*, hind leg, anterior view; (37) *F. yunguensis*, hind leg, posterior view; (38) *F. pusio*, hind leg, anterior view. Scale bars: 1 mm.

14'. Hind tibia without rows of long setae on ventral surface, hind femur on anteroventral surface with 3-4 preapical setae with straight apex (Fig. 41).....*F. sabroskyi* Seago  
 15. Hind femur with middle third of anteroventral surface with two rows of short and straight setae and apical third with

one strong seta (Fig. 43), posteroventral surface with weak preapical protuberance and row of setae that increase in length towards the apex, ending in 3-4 setae inserted on the protuberance (Fig. 44) .....*F. trimaculata* (Stein, 1898)

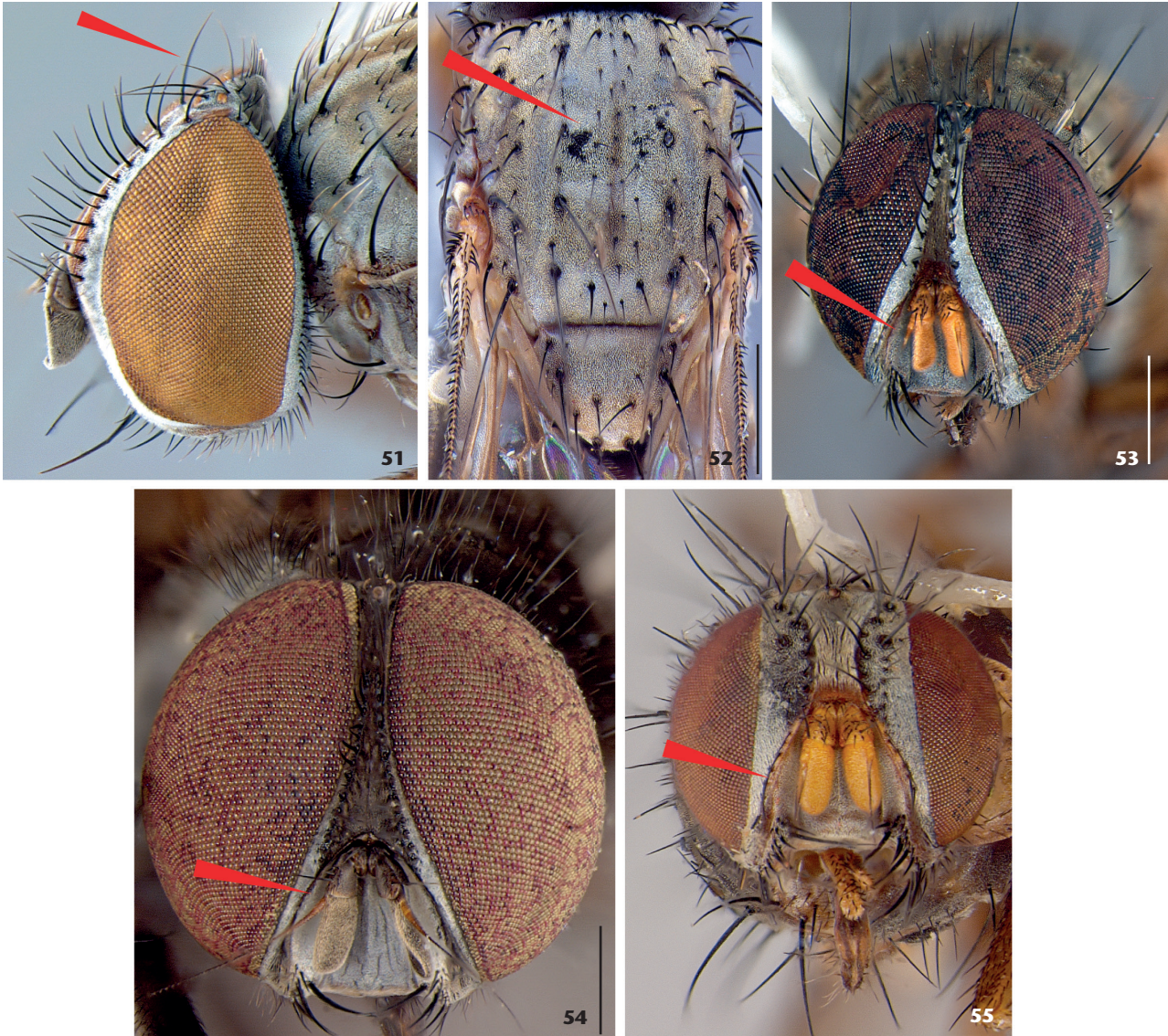




Figures 39-50. *Fannia*, male, hind leg. (39) *F. femoralis*, anterior view; (40) *F. snyderi*, anterior view; (41) *F. sabroskyi*, anterior view; (42) *F. pusio*, posterior view; (43) *F. trimaculata*, anterior view; (44) *F. trimaculata*, posterior view; (45) *F. dodgei*, anterior view; (46) *F. magdalena*, anterior view; (47) *F. embera*; posterior view; (48) *F. embera*; anterior view; (49) *F. porce*, posterior view; (50) *F. porce*; anterior view. Scale bars: 1 mm.

- 15'. Hind femur on middle third of anteroventral surface without short and straight setae, if setae are present in the area, they form a tuft with the ventral setae on basal half.....16
16. Hind tibia on anterodorsal surface with 10 setae (Fig. 45), hind femur on ventral surface with preapical protuberance, anteroventral surface on basal half with series of 6-7 close, strong setae, preapical seta strong (Fig. 45)...*F. dodgei* Seago
- 16'. Hind tibia on anterodorsal surface with 5-8 setae, hind

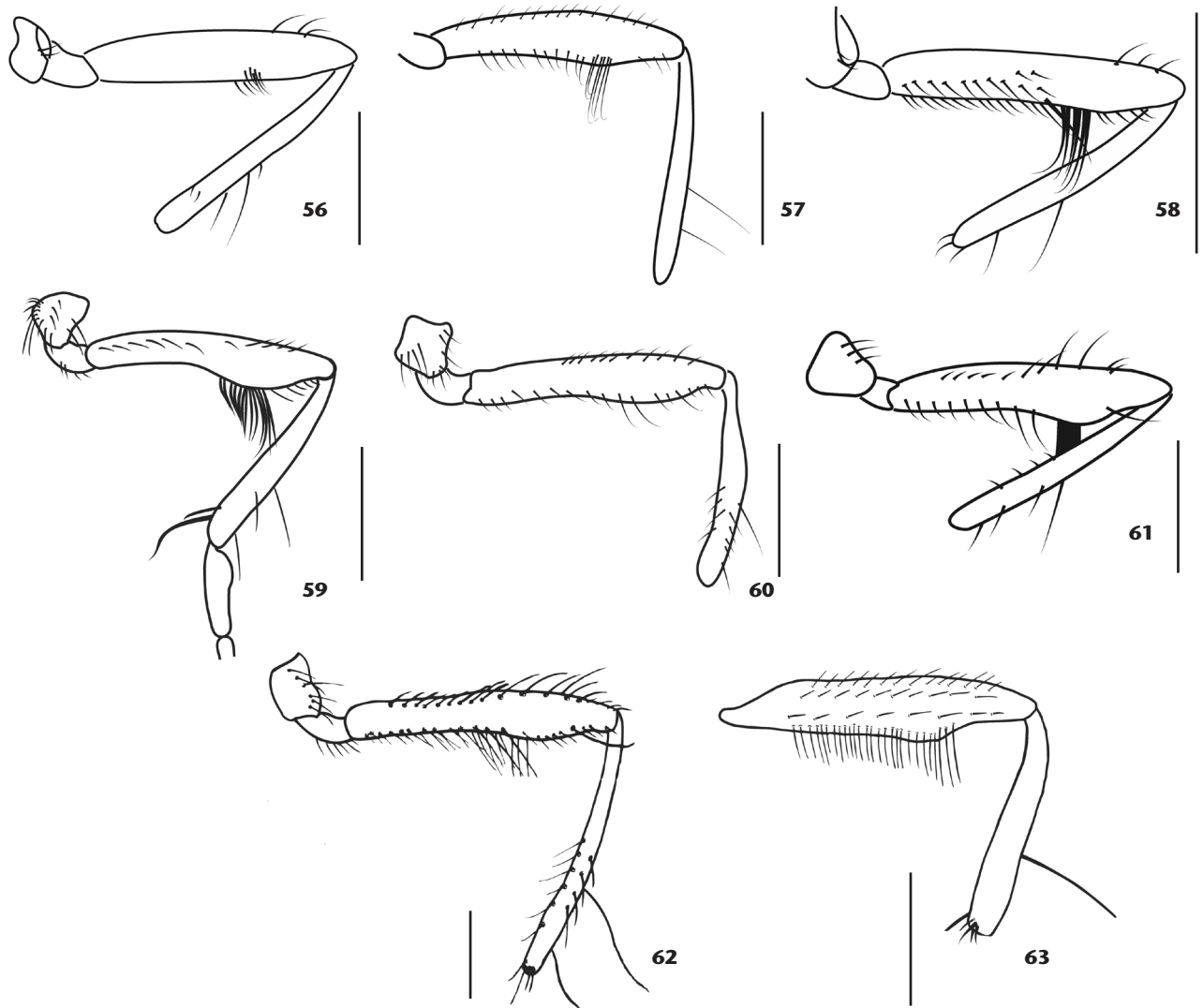
- femur on ventral surface with preapical protuberance, anteroventral surface on basal half with or without a row of close, strong setae .....17
17. Hind femur on base of ventral surface up to preapical protuberance bare, posterior surface with row of long setae that increase in length and on the preapical protuberance form a set of longer setae with weakly curved apices, apical half setulose (Fig. 46) .. *F. magdalena* Grisales, Wolff & Carvalho



Figures 51-55. *Fannia*. (51) *F. canicularis*, male head, anterior view; (52) *F. longipila*, male, dorsal view; (53) *F. longipila*, male head, anterior view; (54) *F. lamosca*, male head, anterior view; (55) *F. longipila*, female head. Scale bars: 1 mm.

- 17'. Hind femur on ventral surface completely setulose or setulose at least from base to preapical protuberance, femur not with characters described above..... 18
18. Hind femur on posteroventral surface with row of long setae ending with hooked apices on protuberance (Fig. 47), ventral surface on basal half with dense setae towards the posteroventral surface where they become sparse (Fig. 48), hind tibia on anterodorsal surface with row of 6-8 setae and anteroventral surface with one median seta (Fig. 48).....  
..... *F. embera* Grisales, Wolff & Carvalho
- 18'. Hind femur on apical half of posteroventral surface with

- row of long setae that become longer and form a tuft of setae with apex slightly curved on preapical protuberance (Fig. 49), ventral surface setulose, hind tibia on anterior surface with row of five setae (Fig. 50).....  
..... *F. porce* Grisales, Wolff & Carvalho
19. Upper orb present (Fig. 51)....*F. canicularis* (Linnaeus, 1761)
- 19'. Upper orb absent ..... 20
20. Scutum with three vittae following *acr* and *dc* rows (Fig. 52), scape and pedicel yellowish or brownish (Fig. 53)..... 21
- 20'. Scutum without vittae, scape and pedicel completely brown or with yellowish parts (Fig. 54)..... 25



Figures 56-63. *Fannia*, hind leg and wing. (56) *F. flavicincta*, posterior view; (57) *F. heydenii*, posterior view; (58) *F. yenhedi*, posterior view; (59) *F. carvalhoi*, basal tarsomere; (60) *F. punctipennis*, anterior view; (61) *F. tumidifemur*, anterior view; (62) *F. lamosca*, anterior view; (63) *F. sanihue*, posterior view. Scale bars: 1 mm.

- |   |                                 |   |                              |
|---|---------------------------------|---|------------------------------|
| 21. Arista completely yellowish.....  | 22                              | imately 10 long preapical <i>pv</i> , not forming a tuft (Fig. 56) ...  |                              |
| 21'. Arista completely dark or part of it yellowish .....   | 23                              | ..... <i>F. flavicincta</i> (Stein)   |                              |
| 22. Parafacial with setae on the ridge, 5 <i>fr</i> , proboscis yellowish (Fig. 55), 1 <i>pra</i> , fore and mid legs yellowish, hind leg brownish.....   | <i>F. longipila</i> Albuquerque | 23'. Arista light brown and not with characters as described above.....   | 24                           |
| 22'. Parafacial without setae on the ridge, 9 <i>fr</i> , proboscis brownish, 0 <i>pra</i> , legs brownish .....  | <i>F. bahiensis</i> Albuquerque | 24. Thorax with brown vitta along acrostichal line, broader brown vitta along dorsocentral lines which dissolves between 4 <sup>th</sup> and 5 <sup>th</sup> dorsocentral setae, and brown postsutural vitta along supraalar line, hind femur with one row of long and hair-like <i>pv</i> , forming a long and curled preapical tuft (Fig. 57) ..... | <i>F. heydenii</i> Wiedemann |
| 23. Arista black with basal third yellow, palpus black, thorax black, brownish pollinose, scutum on postsutural area with brown median vitta extending to the pleural region, apex of scutellum silver and yellowish, hind femur with approx- |                                 | 24'. Thorax with three brown vittae along acrostichal line and dorsocentral line, hind femur on <i>v</i> and <i>pv</i> surface on the   |                              |

- protuberance with tuft of long setae with curved apex, tuft diminishing to the base of the femur (Fig. 58) .....  
.....*F. yenhedi* Albuquerque
25. Basal hind tarsomere wide, on *p* surface with torsion apically (Fig. 59), hind tibia on ventral surface with very long and strong curved seta that almost reaches apex of basal tarsomere (Fig. 59) ..... *F. carvalhoi* Couri
- 25'. Basal tarsomere without expansion or apically torsion, hind tibia on ventral surface without setae ..... 26
26. Three stripes on the scutum, calypter yellowish or whitish ..... 27
- 26'. Scutum without stripes, calypter brownish ..... 28
27. Wing brownish with transverse veins dark brown, calypter and halter yellowish, 10 *fr*, 1 *pra*, hind tibia with 1 *ad* setae and 5 *av* setae (Fig. 60) ..... *F. punctipennis* Albuquerque
- 27'. Wing yellowish with transverse veins not dark brown, calypter whitish and halter yellowish, 12 *fr*, 1 *pra*, hind tibia with 2 *ad* and 3-4 *av* (Fig. 61) ..... *F. tumidifemur* Stein
28. Wing with upper third brownish, hind femur with preapical protuberance on ventral surface and tuft of setae with curved apex, hind tibia with 5 *av* and 2 *ad* (Fig. 62) .....  
.....*F. lamosca* Grisales, Wolff & Carvalho
- 28'. Wing without upper third brownish, hind femur with a row of *pv* that forms long preapical tuft (Fig. 63), hind tibia with 3 *av* and 5 *ad* ..... *F. sanihue* Dominguez & Aballay

### Checklist of the Neotropical forensically important Fanniidae

- Euryomma carioca* Albuquerque, 1956: 2. Type locality: Brazil, Guanabara [= Rio de Janeiro]. References: Brazil (LINHARES 1981, ALMEIDA et al. 1985, LEANDRO & D'ALMEIDA 2005).
- Euryomma cornuatum* Grisales, Wolff & Carvalho, 2012a: 816-819. Type locality: Colombia, Medellín. Reference: Colombia (GRISALES et al. 2012a).
- Euryomma aburrae* Grisales, Wolff & Carvalho, 2012a: 808, 812-814. Type locality: Colombia, Antioquia. Reference: Colombia (Grisales et al. 2012a).
- Euryomma chitarera* Grisales, Wolff & Carvalho, 2012a: 814-816. Type locality: Colombia, Norte de Santander. References: Colombia (GRISALES et al. 2012a).
- Euryomma guane* Grisales, Wolff & Carvalho, 2012a: 819-821. Type locality: Colombia, Santander. Reference: Colombia (GRISALES et al. 2012a).
- Euryomma muisca* Grisales, Wolff & Carvalho, 2012a: 821-824. Type locality: Colombia, Cundinamarca. Reference: Colombia (GRISALES et al. 2012a).
- Euryomma tahami* Grisales, Wolff & Carvalho, 2012a: 824-826. Type locality: Colombia, Antioquia. Reference: Colombia (GRISALES et al. 2012a).
- Euryomma uwa* Grisales, Wolff & Carvalho, 2012a: 826-828. Type locality: Colombia, Santander. Reference: Colombia (GRISALES et al. 2012a).

- Euryomma peregrinum* (Meigen, 1826: 187). Type locality: Germany, Hamburg. References: Argentina (ABALLAY et al. 2012a), Brazil (ALMEIDA et al. 1985).
- Fannia albitarsis* Stein, 1911: 105. Type locality: Chile, Guayacán. References: Argentina (PEROTTI 1998, ABALLAY et al. 2012a).
- Fannia bahiensis* Albuquerque, 1954: 388. Type locality: Brazil, Bahia. Reference: Brazil (GOMES et al. 2002).
- Fannia canicularis* (Linnaeus, 1761: 454). Type locality: "Europe". References: Brazil (LINHARES 1981, ALMEIDA et al. 1985, CARVALHO et al. 2000, LEANDRO & D'ALMEIDA 2005, OLIVEIRA & VASCONCELOS 2010, VASCONCELOS & ARAUJO 2012), Colombia (PÉREZ et al. 2005), Peru (IANNACONE 2003).
- Fannia carvalhoi* Couri, 2005: 457-458. Type locality: Brazil, Rio de Janeiro. Reference: Brazil (LECHETA 2009).
- Fannia chibcha* Grisales, Wolff & Carvalho, 2012b: 7-9. Type locality: Colombia, Cundinamarca. Reference: Colombia (GRISALES et al. 2012b).
- Fannia dodgei* Seago, 1954: 4. Type locality: Panama, David. References: Colombia (GRISALES et al. 2012b).
- Fannia dorsomaculata* Grisales, Wolff & Carvalho, 2012b: 12-13. Type locality: Colombia, Antioquia. Reference: Colombia (GRISALES et al. 2012b).
- Fannia embera* Grisales, Wolff & Carvalho, 2012b: 24-25. Type locality: Colombia, Chocó. Reference: Colombia (GRISALES et al. 2012b).
- Fannia femoralis* Stein, 1898: 282. Type locality: USA, Louisiana. References: Argentina (ABALLAY et al. 2008, BATTÁN HORENSTEIN et al. 2010, PATTUCCI et al. 2011, ABALLAY et al. 2012a, 2012b, BATTÁN HORENSTEIN & SALVO 2012, BATTÁN HORENSTEIN et al. 2012), Brazil (MOURA et al. 2005, LECHETA 2009), Colombia (GARCIA 2010).
- Fannia flavicincta* Stein, 1904: 453. Type locality: Peru, Vilcanota and Colombia, Cordillera. References: Brazil (ALMEIDA et al. 1985, LEANDRO & D'ALMEIDA 2005, BARBOSA et al. 2009, 2010).
- Fannia fusconotata* Rondani, 1868: 27. Type locality: Argentina, Mendoza. References: Argentina (CENTENO et al. 2002, ABALLAY et al. 2008, 2012a, 2012b, PATTUCCI et al. 2011).
- Fannia grandis* Malloch, 1912: 3. Type locality: Panama, Porto Bello. Reference: Colombia (GRISALES et al. 2012b).
- Fannia heydenii* Weidemann, 1830: 429. Type locality: "Brazil". References: Argentina (PATTUCCI et al. 2011, ABALLAY et al. 2012b), Brazil ALMEIDA et al. 1985, GOMES et al. 2002).
- Fannia lamosca* Grisales, Wolff & Carvalho, 2012b: 30-32. Type locality: Colombia, Antioquia. Reference: Colombia (GRISALES et al. 2012b).
- Fannia longipila* Albuquerque, 1954: 385. Type locality: Brazil, São Paulo. Reference: Brazil (GOMES et al. 2002).
- Fannia magdalena* Grisales, Wolff & Carvalho, 2012b: 32-33. Type locality: Colombia, Antioquia. Reference: Colombia (GRISALES et al. 2012b).
- Fannia obscurinervis* Stein, 1900: 207. Type locality: Bolivia, Songo. References: Brazil (LINHARES 1981, ALMEIDA et al. 1985, MOURA et al. 1997, WENDT & CARVALHO 2009, VASCONCELOS &

ARAÚJO 2012), Colombia (GARCIA 2010).

*Fannia penicillaris* Stein, 1900: 205. Type locality: Bolivia, Songo. References: Brazil (LINHARES 1981, ALMEIDA et al. 1985, LEANDRO & D'ALMEIDA 2005, LECHETA 2009, WENDT & Carvalho 2009).

*Fannia pijao* Grisales, Wolff & Carvalho, 2012b: 34-36. Type locality: Colombia, Caldas. Reference: Colombia (GRISALES et al. 2012b).

*Fannia porce* Grisales, Wolff & Carvalho, 2012b: 36-37. Type locality: Colombia, Antioquia. Reference: Colombia (GRISALES et al. 2012b).

*Fannia punctipennis* Albuquerque, 1954: 319. Type locality: Brazil, Minas Gerais. References: Brazil (ALMEIDA et al. 1985, BRUM et al. 1996, MOURA et al. 1997, LECHETA 2009).

*Fannia pusio* Wiedemann, 1830: 437. Type locality: "South America". References: Brazil (LINHARES 1981, CAMPOS & BARROS 1995, CARVALHO et al. 2000, MARCHIORI et al. 2000, GOMES et al. 2002, LEANDRO & D'ALMEIDA 2005, MOURA et al. 2005, SOUZA et al. 2008, BARBOSA et al. 2009, 2010, LECHETA 2009, ROSA et al. 2009, KRÜGER et al. 2010, OLIVEIRA & VASCONCELOS 2010, FARIA et al. 2013, VASCONCELOS & ARAÚJO 2012), Colombia (GRISALES et al. 2012b).

*Fannia sabroskyi* Seago, 1954: 5. Type locality: Guyana, Kaieteur. References: Brazil (ALMEIDA et al. 1985, LECHETA 2009).

*Fannia sanihue* Domínguez & Aballay, 2008: 820, 822. Type locality: Argentina, Mendoza. References: Argentina (DOMÍNGUEZ & ABALLAY 2008, PATTUCCI et al. 2011, ABALLAY et al. 2012b).

*Fannia scalaris* Fabricius, 1794: 332. Type locality: Denmark, "Hafniae" [= Copenhagen]. References: Brazil (ALMEIDA et al. 1985), Chile (ORTLOFF et al. 2012), Colombia (WOLFF et al. 2004), Costa Rica (CALDERÓN-ARGUEDAS et al. 2005).

*Fannia snyderi* Seago, 1954: 2. Type locality: USA, Maryland. References: Brazil (ALMEIDA et al. 1985, LEANDRO & D'ALMEIDA 2005, ROSA et al. 2009).

*Fannia trimaculata* Stein, 1898: 176. Type locality: North America and Jamaica. References: Brazil (LECHETA 2009), Colombia (GRISALES et al. 2012b).

*Fannia tumidifemur* Stein, 1911: 104. Type locality: Bolivia, Sorata. References: Brazil (ALMEIDA et al. 1985, LEANDRO & D'ALMEIDA 2005, LECHETA 2009).

*Fannia yenhedi* Albuquerque, 1957: 16. Type locality: Brazil, São Paulo. References: Brazil (LINHARES 1981, FARIA et al. 2013).

*Fannia yunguensis* Quiroga & Dominguez, 2010: 98-99. Type locality: Argentina, Jujuy. Reference: Argentina (QUIROGA & DOMINGUEZ 2010).

## ACKNOWLEDGMENTS

We are thankful to the curators of the entomological collections for facilitating access to specimens. We also thank the anonymous reviewers for their helpful comments on the manuscript. James J. Roper improved the English language and provided helpful comments. Financial support was provided by a CNPq (Brazil) postdoctoral grant to DG (process 158870/2014-0) and doctoral

grant to ML. CJBC is a fellow of CNPq (process 304713/2011-2). MCD and FHA thanks to CONICET and ANPCyT (PICT 2012-0231 and PICT 2013-514) Argentina, for financial support.

## LITERATURE CITED

- ABALLAY FHA, MURÚA F, ACOSTA JC, CENTENO N (2008) Primer registro de artropodofauna cadavérica em sustratos humanos y animales em San Juan, Argentina. *Revista de la Sociedad Entomológica Argentina* 67: 157-163.
- ABALLAY FH, DOMÍNGUEZ MC, CAMPÓN FF (2012a) Adult Fanniidae associated to pig carcasses during the winter season in a semiarid environment: Initial examination of their potential as complementary PMI indicators. *Forensic Science International* 219: 1-4. doi: 10.1016/j.forsciint.2011.11.019
- ABALLAY FH, MURUA AF, ACOSTA JC, CENTENO N (2012b) Succession of Carrion Fauna in the Arid Region of San Juan Province, Argentina and its Forensic Relevance. *Neotropical Entomology* 41: 27-31. doi: 10.1007/s13744-011-0005-9
- ALBUQUERQUE D DE O (1945) Sobre *Fannia trimaculata* (Stein, 1897) Malloch 1913 (Diptera, Muscidae). *Boletim do Museu Nacional do Rio de Janeiro* 34: 1-16.
- ALBUQUERQUE D DE O (1954) Descrição de três espécies novas de *Fannia* R.-D. brasileiras, com palpos e antenas amarelas (Diptera-Muscidae). *Anais da Academia Brasileira de Ciências* 26: 385-394.
- ALBUQUERQUE D DE O (1956) Fauna do Distrito Federal. Contribuição ao conhecimento de *Euryomma* Stein, 1899, com descrição de uma espécie nova (Diptera, Muscidae). *Boletim do Museu Nacional do Rio de Janeiro* 134: 1-6.
- ALBUQUERQUE D DE O (1957) Sobre espécies de *Fannia* R.-D. 1830 novas ou pouco conhecidas (Diptera-Muscidae). *Boletim do Museu Nacional do Rio de Janeiro* 172: 1-31.
- ALBUQUERQUE D DE O, PAMPLONA D, CARVALHO CJB DE (1981) Contribuição ao conhecimento dos *Fannia* R.D., 1830 da região Neotropical (Diptera, Fanniidae). *Arquivos do Museu Nacional do Rio de Janeiro* 56: 9-34.
- ALMEIDA JR DE, CARVALHO CJB DE, MALKOWSKI SR (1985) Dípteros sinantrópicos de Curitiba e arredores (Paraná, Brasil). II. Fanniidae e Anthomyiidae. *Anais da Sociedade Entomológica do Brasil* 14: 277-288.
- ANDRADE JB DE, ROCHA FA, RODRIGUES P, SOUSA GR, FARIA LB, ZUBEN CJ, ROSSI NM, GODOY WAC (2002) Larval dispersal and predation in experimental populations of *Chrysomya albiceps* and *Cochliomyia macellaria* (Diptera: Calliphoridae). *Memórias do Instituto Oswaldo Cruz* 97: 1137-1140.
- BARBOSA RR, MELLO-PATIU CA DE, MELLO RP, QUEIROZ MMC DE (2009) New records of calyptrate dipterans (Fanniidae, Muscidae and Sarcophagidae) associated with the decomposition of domestic pigs in Brazil. *Memórias do Instituto Oswaldo Cruz* 104: 923-926. doi: 10.1590/S0074-02762009000600018
- BARBOSA RR, MELLO-PATIU CA DE, URURAHY-RODRIGUES A, BARBOSA CG, QUEIROZ MMC (2010) Temporal references of ten calyptrate

- dipteran species of medicolegal importance in Rio de Janeiro, Brazil. **Memórias do Instituto Oswaldo Cruz** 105: 191-198. doi: 10.1590/S0074-02762010000200014
- BATTÁN HORENSTEIN M, SALVO A (2012) Community dynamics of carrion flies and their parasitoids in experimental carcasses in central Argentina. **Journal of Insect Science** 12: 1-10. doi: 10.1673/031.012.0801
- BATTÁN HORENSTEIN M, LINHARES AX, FERRADAS BR, GARCÍA D DE (2010) Decomposition and dipteran succession in pig carrion in central Argentina: ecological aspects and their importance in forensic science. **Medical and Veterinary Entomology** 24: 16-25. doi: 10.1111/j.1365-2915.2009.00854.x
- BATTÁN HORENSTEIN M, ROSSO B, GARCÍA MD (2012) Seasonal structure and dynamics of sarcosaprophagous fauna on pig carrion in a rural area of Cordoba (Argentina): Their importance for forensic science. **Forensic Science International** 207: 146-156. doi: 10.1016/j.forsciint.2011.10.043
- BRUM JGW, VIANNA EES, GENTILINI F, PINTO LS (1996) *Fannia punctipennis* (Diptera: Fanniidae), vetor de ovos da *Dermatobia hominis* (Oestridae: Cuterebrinae) em Pelotas, RS. **Revista Brasileira de Parasitologia Veterinária** 5: 59-60.
- CALDERÓN-ARGUEDAS O, TROYO A, SOLANO ME (2005) Sucesión de larvas de muscoídeos durante la degradación cadavérica en un bosque premontano húmedo tropical. **Biomédica** 16: 79-85.
- CAMPOS CFM, BARROS AT (1995) Dípteros muscoídeos da área urbana de Corumbá, Mato Grosso do Sul, Brasil. **Revista Brasileira de Biologia** 55: 351-354.
- CARVALHO CJB DE, PONT AC, COURI MS, PAMPLONA D (2003) A catalogue of the Fanniidae (Diptera) of the Neotropical Region. **Zootaxa** 219: 1-32.
- CARVALHO CJB DE, MELLO-PATIU CA DE (2008). Key to the adults of the most common forensic species of Diptera in South America. **Revista Brasileira de Entomologia** 52: 390-406. doi: 10.1590/S0085-56262008000300012
- CARVALHO LML, THYSSEN PJ, LINHARES AX, PALHARES FAB (2000) A Checklist of Arthropods Associated with Pig Carrion and Human Corpses in Southeastern Brazil. **Memórias do Instituto Oswaldo Cruz** 95: 135-138. doi: 10.1590/S0074-02762000000100023
- CENTENO N, MALDONADO M, OLIVA A (2002) Seasonal patterns of arthropods occurring on sheltered and unsheltered pig carcasses in Buenos Aires Province (Argentina). **Forensic Science International** 126: 63-70. doi: 10.1016/S0379-0738(02)00037-3
- CHILLCOTT J (1961) A Revision of the Nearctic Species of Fanniinae (Diptera: Muscidae). **Canadian Entomologist** 92: 1-295.
- COURI MS (1992) Immature stages of *Fannia pusio* (Wiedemann, 1830) (Diptera, Fanniidae). **Revista Brasileira de Biologia** 52: 83-91. doi: 10.1590/S0101-81751990000200004
- COURI MS (2004) Two new species of *Fannia* Robineau-Desvoidy (Diptera, Fanniidae). **Brazilian Journal of Biology** 64: 767-770. doi: 10.1590/S1519-69842004000500005
- COURI MS (2005) *Fannia carvalhoi* sp. nov.: a new species from Peru (Diptera, Fanniidae). **Revista Brasileira de Entomologia** 49: 457-458. doi: 10.1590/S0085-56262005000400006
- COURI M, CARVALHO CJB DE (2005) Catálogo das espécies de Fanniidae do estado do Rio de Janeiro (Brasil). **Biota Neotropica** 5: 1-9. doi: 10.1590/S1676-06032005000300016
- COURI MS, WINAGRASKI E (2005) New *Fannia* Robineau-Desvoidy from Amazonas, Brazil and new geographical record (Diptera, Fanniidae). **Revista Brasileira de Zoologia** 22: 645-647. doi: 10.1590/S0101-81752005000300018.
- DOMÍNGUEZ MC (2007) Taxonomic revision of southern South America *Fannia* R.-D. **Papéis Avulsos de Zoolologia** 47: 289-347.
- DOMÍNGUEZ MC, ABALLAY F (2008) A new species of the genus *Fannia* Robineau-Desvoidy (Diptera: Fanniidae) collected on pig carrion in Mendoza, Argentina. **Annals of Zoology** 58: 819-824. doi: 10.3161/000345408X396747.
- DOMÍNGUEZ MC, PONT AC (2014) **Fanniidae (Insecta: Diptera)**. Auckland, Fauna of New Zealand Series vol. 71, ISBN 978-0-478-34746-3, 91p.
- FARIA LS, PASETO ML, FRANCO FT, PERDIGÃO VC, CAPEL G, MENDES J (2013) Insects Breeding in Pig Carrion in Two Environments of a Rural Area of the State of Minas Gerais, Brazil. **Neotropical Entomology** 42: 216-222. doi: 10.1007/s13744-012-0099-8
- GARCIA ECA (2010) Notes on necrophagous flies (Diptera: Calyptratae) associated to fish carrion in Colombian Amazon. **Acta Amazonica** 40: 397-400. doi: 10.1590/S0044-59672010000200018
- GOMES PR, KOLLER WW, GOMES A, CARVALHO CJB DE, ZORZATTO R (2002) Dípteros fanídeos vetores de ovos de *Dermatobia hominis* em Campo Grande, Mato Grosso do Sul. **Pesquisa Veterinária Brasileira** 22: 114-118. doi: 10.1590/S0100-736X2002000300005
- GRISALES D, WOLFF M, CARVALHO CJB DE (2012a) Neotropical Fanniidae (Insecta: Diptera): new species of *Euryomma* Stein from Colombia. **Journal of Natural History** 46: 803-829. doi: 10.1080/00222933.2011.651644.
- GRISALES D, WOLFF M, CARVALHO CJB DE (2012b) Neotropical Fanniidae (Insecta, Diptera): new species of *Fannia* from Colombia. **Zootaxa** 3591: 1-46. doi: 10.11646/zootaxa.3591.1.1
- IANNACONE J (2003) Artropofauna de importancia forense en un cadáver de cerdo en El Callao, Perú. **Revista Brasileira de Zoologia** 20: 85-90. doi: 10.1590/S0101-81752003000100010
- KRÜGER RE, KIRST FD, SOUZA ASB DE (2010) Rate of development of forensically-important Diptera in southern Brazil. **Revista Brasileira de Entomologia** 54: 624-629. doi: 10.1590/S0085-56262010000400014
- LECHETA MC (2009) Ocorrência e chave pictórica para os machos das espécies de Fanniidae (Diptera) de interesse forense associados à carcaça de coelho durante o outono e primavera em Curitiba, Paraná. Curitiba, Bachelor's Dissertation, Programa de Pós-Graduação em Entomologia, Departamento de Zoologia, Universidade Federal do Paraná.

- Available online at: <http://acervodigital.ufpr.br/bitstream/handle/1884/27996/R%20-%20D%20-%20MELISE%20CRISTINE%20LECHETA.pdf?sequence=1>
- LEANDRO MJF, D'ALMEIDA JM (2005) Levantamento de Calliphoridae, Fanniidae, Muscidae e Sarcophagidae em um fragmento de mata na Ilha do Governador, Rio de Janeiro, Brasil. *Iheringia, Série Zoologia*, **95**: 377-381. doi: 10.1590/S0073-47212005000400006
- LINHARES AX (1981) Synanthropy of Muscidae, Fanniidae and Anthomyiidae (Diptera) in the city of Campinas, São Paulo, Brazil. *Revista Brasileira de Entomologia* **25**: 231-243.
- MALLOCH JR (1912) New Diptera from Panama. *Smithsonian Miscellaneous Collections* **59**: 1-8.
- MCALPINE JF (1981) Morphology and terminology – adults, p. 9-63. In: MCALPINE JF, PETERSON BV, SHEWELL GE, TESKEY HJ, VOCKEROTH JR, WOOD DM (Eds.) *Manual of Nearctic Diptera*. Ottawa, Agriculture Canada Research Branch, vol. 1.
- MARCHIORI CH, CASTRO MEV, PAIVA TCG, TEIXEIRA FF, SILVA CG (2000) Dípteros muscóides de importância médica e veterinária e seus parasitóides em Goiás. *Arquivo Brasileiro de Medicina Veterinária e Zootecnia* **52**: 350-353. doi: 10.1590/S0102-09352000000400010
- MATUSZEWSKI S, BAJERLEIN D, KONWERSKI S, SZPILA K (2010) Insect succession and carrion decomposition in selected forests of Central Europe. Part 2. Composition and residency patterns of carrion fauna. *Forensic Science International* **195**: 42-51. doi: 10.1016/j.forsciint.2009.11.007
- MATUSZEWSKI S, BAJERLEIN D, KONWERSKI S, SZPILA K (2011) Insect succession and carrion decomposition in selected forests of Central Europe. Part 3. Succession of carrion fauna. *Forensic Science International* **207**: 150-163. doi: 10.1016/j.forsciint.2010.09.022
- MEIGEN JW (1826) *Systematische Beschreibung der bekannten europäischen zweiflügeligen Insekten*. Hamm, vol. 5, 412p.
- MICHAUD JP, MOREAU G (2009) Predicting the visitation of carcasses by carrion-related insects under different rates of degree-day accumulation. *Forensic Science International* **185**: 78-83. doi: 10.1016/j.forsciint.2008.12.015
- MOURA MO, CARVALHO CJB DE, MONTEIRO-FILHO ELA (1997) A Preliminary Analysis of Insects of Medico-Legal Importance in Curitiba, State of Paraná. *Memórias do Instituto Oswaldo Cruz* **92**: 269-274. doi: 10.1590/S0074-02761997000200023
- MOURA MO, CARVALHO CJB DE, MONTEIRO-FILHO ELA (2005) Estrutura de comunidades necrófagas: efeito da partilha de recursos na diversidade. *Revista Brasileira de Zoologia* **22**: 1134-1140. doi: 10.1590/S0101-81752005000400046
- OLIVEIRA TC, VASCONCELOS SD (2010) Insects (Diptera) associated with cadavers at the Institute of Legal Medicine in Pernambuco, Brazil: Implications for forensic entomology. *Forensic Science International* **198**: 97-102. doi: 10.1016/j.forsciint.2010.01.011
- ORTLOFF A, PEÑA P, RIQUELME M (2012) Preliminary study of the succession pattern of necrobiont insects, colonizing species and larvae on pig carcasses in Temuco (Chile) for forensic applications. *Forensic Science International* **222**: 36-41. doi: 10.1016/j.forsciint.2012.04.022
- PATTUCCI LD, MULIERI PR, DOMÍNGUEZ MC, MARILUIS JC, SCHNACK JA (2011) Estudio preliminar de Calyprtratae (Diptera) en la Reserva Natural Estricta Otamendi, Buenos Aires, Argentina. *Revista de la Sociedad Entomológica Argentina* **70**: 157-168.
- PÉREZ SP, DUQUE P, WOLFF M (2005) Successional behavior and occurrence matrix of carrion-associated arthropods in the urban area of Medellín, Colombia. *Journal of Forensic Science* **50**: 1-7. doi: 10.1520/JFS2004046
- PEROTTI A (1998) Moscas sinántropicas (Diptera: Muscidae y Fanniidae) asociadas a producciones avícolas del centro-sud-este bonaerense. *Natura Neotropicalis* **29**: 145-154. doi: 10.14409/natura.v2i29.3734
- QUIROGA NI, DOMÍNGUEZ MC (2010) A new species of the genus *Fannia* Robineau-Desvoidy (Diptera: Fanniidae) belonging to the *canicularis* species group, collected on pig carrion in the Yungas of the province of Jujuy, Argentina. *Studies on Neotropical Fauna and Environment* **45**: 95-100. doi: 10.1080/01650521.2010.497994
- RONDANI C (1868) Diptera aliqua in America meridionali lecta a Prof. P. Strobel annis 1866-67 distincta et annotata, novis aliquibus descriptis. *Annuario della Società di Naturalisti di Modena* **3**: 24-40.
- ROSA TA, BABATA MLY, SOUZA CM DE, SOUSA D DE, MELLO-PATIU CA DE, MENDES J (2009) Dípteros de Interesse Forense em Dois Perfis de Vegetação do Cerrado em Uberlândia, MG. *Neotropical Entomology* **38**: 859-866.
- ROBACK SS (1951) A classification of muscoid Calyprtrate Diptera. *Annals of the Entomological Society of America* **44**: 327-361. doi: 10.1093/aesa/44.3.327
- SEAGO JM (1954) The *pusio* group of the genus *Fannia* Robineau-Desvoidy, with descriptions of new Species (Diptera, Muscidae). *American Museum Novitates* **1699**: 1-13.
- SHIAO AF, YEH TC (2008) Larval competition of *Chrysomya megacephala* and *Chrysomya rufifacies* (Diptera: Calliphoridae): behaviour and ecological studies of two blow fly species of forensic significance. *Journal of Medical Entomology* **45**: 785-799. doi: 10.1603/0022-2585(2008)45[785:LCOCMA]2.0.CO;2
- SOUZA ASB DE, KIRST FD, KRÜGER RF (2008) Insects of forensic importance from Rio Grande do Sul state in southern Brazil. *Revista Brasileira de Entomologia* **52**: 641-646. doi: 10.1590/S0085-56262008000400016
- STEIN P (1898) Nordamerikanische Anthomyiden. Beitrag zur Dipterenfauna der Vereinigten Staaten. *Berliner entomologische Zeitschrift* **42**: 161-288.
- STEIN P (1904) Die Amerikanischen Anthomyiden des Königlichen Museums für Naturkunde zu Berlin und des Ungarischen National-Museums zu Budapest. *Annales Historico-Naturales Musei Nationalis Hungarici* **2**: 414-495.
- STEIN P (1900) Vier neue aus Bolivia stammende Homalomyia. *Arten des Ungarischen National-Museums. Természettudományi Füzetek* **23**: 205-212.

- STEIN P (1911) Die von Schnuse in Südamerika gefangenen Anthomyiden. *Archiv für Naturgeschichte* 77: 61-189.
- STUCKENBERG BR (1999) Antennal evolution in the Brachycera (Diptera), with a reassessment of terminology to the flagellum. *Studia Dipterologica* 6: 33-48.
- VASCONCELOS SD, ARAUJO MCS (2012) Necrophagous species of Diptera and Coleoptera in northeastern Brazil: state of the art and challenges for the Forensic Entomologist. *Revista Brasileira de Entomologia* 56: 7-14. doi: 10.1590/S0085-56262012005000014
- WENDT LD (2010) New species and new records of *Fannia* Robineau-Desvoidy (Diptera, Fanniidae) from the Brazilian Amazon Region. *Zootaxa* 2575: 38-48. doi: 10.11646/zootaxa.2575.1.1
- WENDT LD, CARVALHO CJB DE (2007) Taxonomia de Fanniidae (Diptera) do sul do Brasil – I: nova espécie e chave de identificação de *Euryomma* Stein. *Revista Brasileira de Entomologia* 51: 197-204. doi: 10.1590/S0085-56262007000200009
- WENDT LD, CARVALHO CJB DE (2009) Taxonomia de Fanniidae (Diptera) do sul do Brasil – II: Novas espécies e chave de identificação de *Fannia* Robineau-Desvoidy. *Revista Brasileira de Entomologia* 53: 171-206. doi: 10.1590/S0085-56262009000200003
- WIEDEMANN CRW (1830) *Aussereuropäische zweiflügelige Insekten*. Hamm, Part II, 684p.
- WOLFF M, URIBE A, ORTIZ A, DUQUE P (2001) A preliminary study of forensic entomology in Medellín, Colombia. *Forensic Science International* 120: 53-59. doi: 10.1016/S0379-0738(01)00422-4
- WOLFF M, BUILES A, ZAPATA G, MORALES G, BENECKE M (2004) Detection of Parathion (O,O-diethyl O-(4-nitrophenyl) phosphorothioate) by HPLC in insects of forensic importance in Medellín, Colombia. *Anil Aggrawal's Internet Journal of Forensic Medicine and Toxicology* 5: 6-11.

---

Submitted: 22 March 2016

Received in revised form: 20 May 2016

Accepted: 14 June 2016

Editorial responsibility: Gabriel L.F. Mejdalani

---

**Author Contributions:** DG, ML, FA and CJB participated equally in the preparation of this article.

**Competing Interests:** The authors have declared that no competing interests exist.