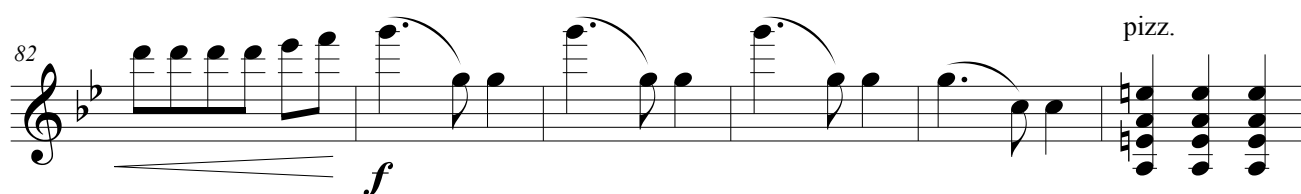
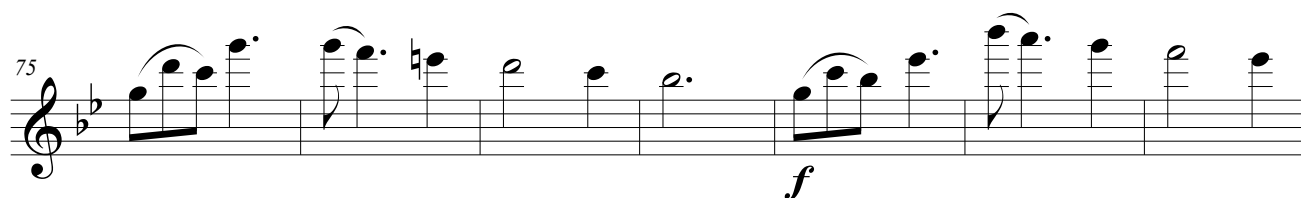
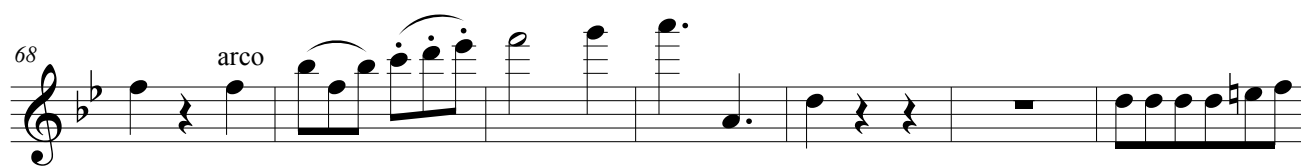
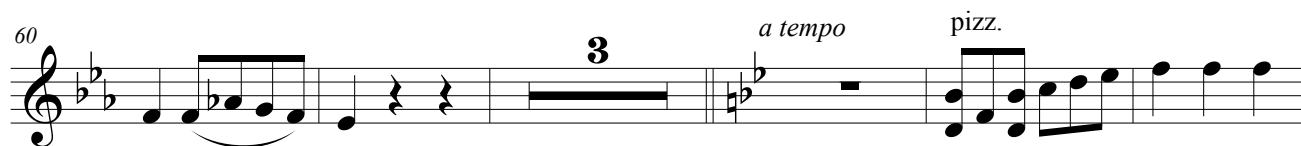
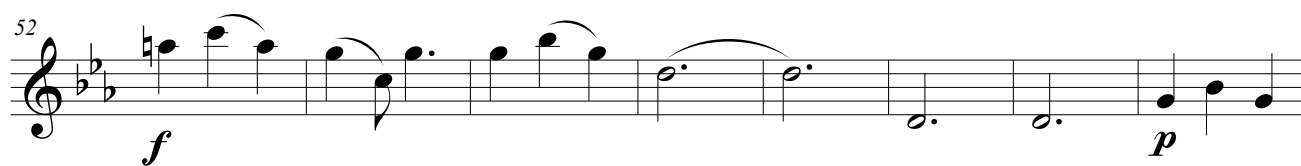
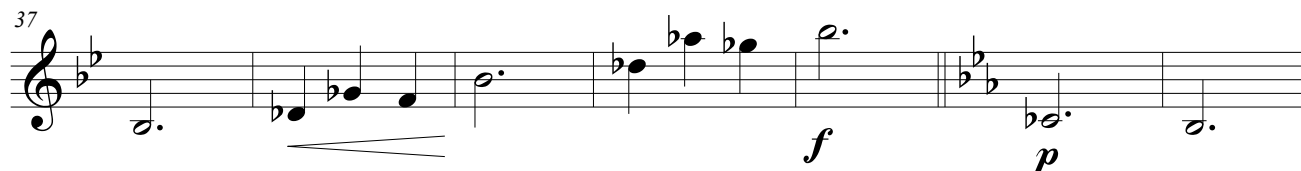


II

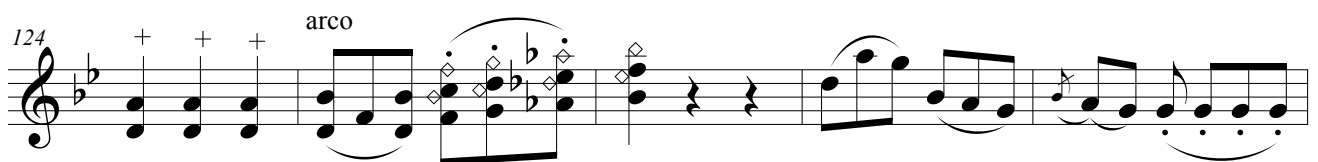
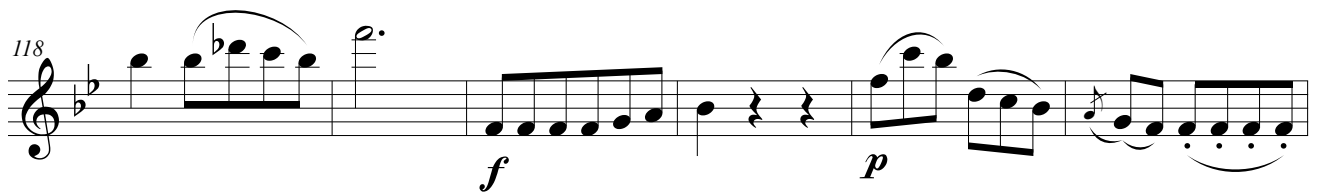
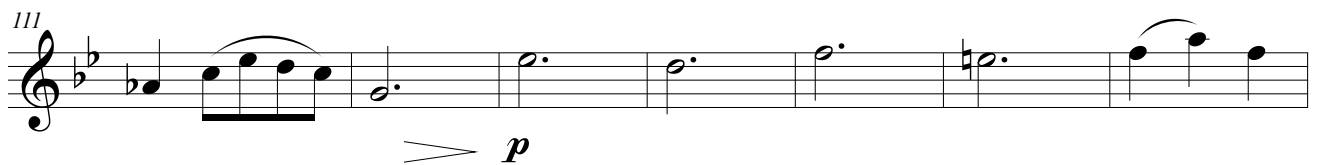
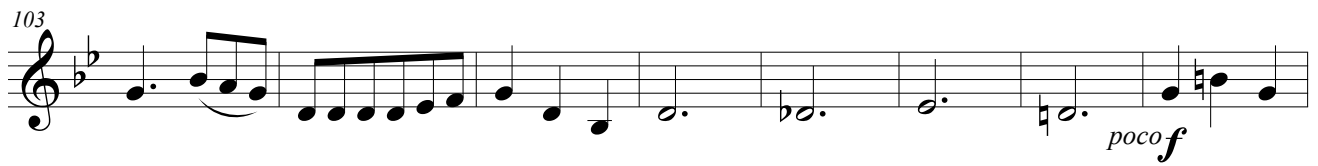
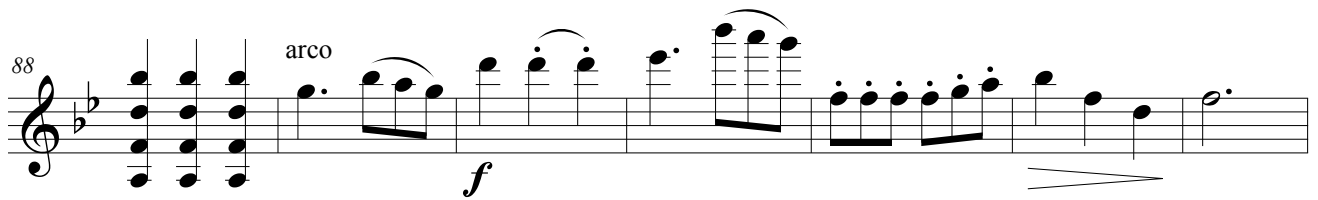
Allegro scherzando

Violin II score, measures 1 to 30. The key signature is B-flat major (two flats). The time signature is 3/8. The score includes dynamic markings (*p*, *f*), articulation (accents), and performance instructions (arco, pizz.).

Measures 1-4: Measure 1 has a whole rest. Measures 2-4 contain a melodic line starting on G4, moving up to A4, B4, and C5, with a *p* dynamic. Measure 4 has an accent on C5. Measures 5-8: Measure 5 is marked with a 5 and 'arco'. Measures 6-8 contain a melodic line starting on G4, moving up to A4, B4, and C5, with a *p* dynamic. Measure 8 has an accent on C5. Measures 9-12: Measure 9 is marked with a 5 and 'arco'. Measures 10-12 contain a melodic line starting on G4, moving up to A4, B4, and C5, with a *p* dynamic. Measure 12 has an accent on C5. Measures 13-16: Measure 13 is marked with a 5 and 'arco'. Measures 14-16 contain a melodic line starting on G4, moving up to A4, B4, and C5, with a *p* dynamic. Measure 16 has an accent on C5. Measures 17-20: Measure 17 is marked with a 17 and 'arco'. Measures 18-20 contain a melodic line starting on G4, moving up to A4, B4, and C5, with a *p* dynamic. Measure 20 has an accent on C5. Measures 21-24: Measure 21 is marked with a 17 and 'arco'. Measures 22-24 contain a melodic line starting on G4, moving up to A4, B4, and C5, with a *p* dynamic. Measure 24 has an accent on C5. Measures 25-28: Measure 25 is marked with a 24 and 'arco'. Measures 26-28 contain a melodic line starting on G4, moving up to A4, B4, and C5, with a *p* dynamic. Measure 28 has an accent on C5. Measures 29-30: Measure 29 is marked with a 24 and 'arco'. Measures 30-32 contain a melodic line starting on G4, moving up to A4, B4, and C5, with a *p* dynamic. Measure 32 has an accent on C5.



II



135

139

cresc.

f

145

p

The image shows a musical score for Sonata No. 5, II, measures 135-145. The score is written in treble clef with a key signature of two flats (B-flat and E-flat). The music consists of a single melodic line. Measure 135 starts with a quarter rest, followed by a quarter note G4, a quarter note A4, a quarter note B4, a quarter note C5, and a quarter note D5. Measure 136 has a quarter note E5, a quarter note F5, a quarter note G5, a quarter note A5, and a quarter note B5. Measure 137 has a quarter note C6, a quarter note D6, a quarter note E6, a quarter note F6, and a quarter note G6. Measure 138 has a quarter note A6, a quarter note B6, a quarter note C7, a quarter note D7, and a quarter note E7. Measure 139 has a quarter note F7, a quarter note G7, a quarter note A7, a quarter note B7, and a quarter note C8. Measure 140 has a quarter note D8, a quarter note E8, a quarter note F8, a quarter note G8, and a quarter note A8. Measure 141 has a quarter note B8, a quarter note C9, a quarter note D9, a quarter note E9, and a quarter note F9. Measure 142 has a quarter note G9, a quarter note A9, a quarter note B9, a quarter note C10, and a quarter note D10. Measure 143 has a quarter note E10, a quarter note F10, a quarter note G10, a quarter note A10, and a quarter note B10. Measure 144 has a quarter note C11, a quarter note D11, a quarter note E11, a quarter note F11, and a quarter note G11. Measure 145 has a quarter note A11, a quarter note B11, a quarter note C12, a quarter note D12, and a quarter note E12. The score includes dynamic markings: *cresc.* (crescendo) at measure 139, *f* (forte) at measure 140, and *p* (piano) at measure 145. The piece ends with a double bar line at the end of measure 145.