

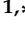


Article

Killer-Cell Immunoglobulin-like Receptor Diversity in an Admixed South American Population

Marlon Castrillon ¹, Nancy D. Marin ² , Amado J. Karduss-Urueta ³ , Sonia Y. Velasquez ^{4,5,†} and Cristian M. Alvarez ^{1,*} 

¹ Grupo de Inmunología Celular e Inmunogenética (GICIG), Universidad de Antioquia (U-de-A), Medellín 050010, Colombia

² Division of Oncology, Department of Medicine, Washington University School of Medicine, St. Louis, MO 63110, USA

³ Instituto de Cancerología Las Américas, Medellín 050025, Colombia

⁴ Department of Anesthesiology and Surgical Intensive Care Medicine, Medical Faculty Mannheim, Heidelberg University, 68167 Mannheim, Germany

⁵ Mannheim Institute for Innate Immunoscience (MI3), Medical Faculty Mannheim, Heidelberg University, 68167 Mannheim, Germany

* Correspondence: cristian.alvarez@udea.edu.co

† These authors contributed equally to this work.



Citation: Castrillon, M.; Marin, N.D.; Karduss-Urueta, A.J.; Velasquez, S.Y.; Alvarez, C.M. Killer-Cell Immunoglobulin-like Receptor Diversity in an Admixed South American Population. *Cells* **2022**, *11*, 2776. <https://doi.org/10.3390/cells11182776>

Academic Editor: Subramaniam Malarkannan

Received: 2 August 2022

Accepted: 29 August 2022

Published: 6 September 2022

Publisher's Note: MDPI stays neutral with regard to jurisdictional claims in published maps and institutional affiliations.



Copyright: © 2022 by the authors. Licensee MDPI, Basel, Switzerland. This article is an open access article distributed under the terms and conditions of the Creative Commons Attribution (CC BY) license (<https://creativecommons.org/licenses/by/4.0/>).

Abstract: Natural Killer (NK) cells are innate immune cells that mediate antiviral and antitumor responses. NK cell activation and induction of effector functions are tightly regulated by the integration of activating and inhibitory receptors such as killer immunoglobulin-like receptors (KIR). *KIR* genes are characterized by a high degree of diversity due to presence or absence, gene copy number and allelic polymorphism. The aim of this study was to establish the distribution of *KIR* genes and genotypes, to infer the most common haplotypes in an admixed Colombian population and to compare these *KIR* gene frequencies with some Central and South American populations and worldwide. A total of 161 individuals from Medellín, Colombia were included in the study. Genomic DNA was used for *KIR* and *HLA* genotyping. We analyzed only *KIR* gene-content (presence or absence) based on PCR-SSO. The *KIR* genotype, most common haplotypes and combinations of *KIR* and *HLA* ligands frequencies were estimated according to the presence or absence of *KIR* and *HLA* genes. Dendrograms, principal component (PC) analysis and Heatmap analysis based on genetic distance were constructed to compare *KIR* gene frequencies among Central and South American, worldwide and Amerindian populations. The 16 *KIR* genes analyzed were distributed in 37 different genotypes and the 7 most frequent *KIR* inferred haplotypes. Importantly, we found three new genotypes not previously reported in any other ethnic group. Our genetic distance, PC and Heatmap analysis revealed marked differences in the distribution of *KIR* gene frequencies in the Medellín population compared to worldwide populations. These differences occurred mainly in the activating *KIR* isoforms, which are more frequent in our population, particularly *KIR3DS1*. Finally, we observed unique structural patterns of genotypes, which evidences the potential diversity and variability of this gene family in our population, and the need for exhaustive genetic studies to expand our understanding of the *KIR* gene complex in Colombian populations.

Keywords: KIR; NK cells; HLA

1. Introduction

The killer immunoglobulin-like receptors (KIR, also known as CD158) are a highly polymorphic family of transmembrane glycoproteins expressed on the surface of natural killer (NK) cells [1,2] and a few subsets of CD4 and CD8 T cells as well as $\gamma\delta$ T cells [3–5]. KIR molecules interact with classical human leukocyte antigens class I (HLA-I) molecules, mainly HLA-A, HLA-B and HLA-C; and nonclassical class I molecules, particularly HLA-G

and HLA-F [6]. KIR-HLA-I interactions regulate NK cell development and activation and are particularly important to control NK cell education, responsiveness and to ensure self-tolerance. Thus, NK cells lacking the specific inhibitory KIR molecule or missing KIR-HLA-I self-interactions are considered uneducated and hyporesponsive [7]. To compensate for this, a large proportion of KIR negative cells express CD94/NKG2A that binds to HLA-E, and NK cell education and response can be mediated by this interaction [8]. Upon maturation, interaction between inhibitory KIR and HLA-I molecules in mature NK cells prevents NK cell activation. In contrast, downregulation of HLA-I upon viral infections, tumor transformation and transplantation favor NK cell activation and allows them to mediate “missing self” recognition of potential target cells [9–11].

The KIR nomenclature is determined according to the structure of the molecules: the number of extracellular Ig-like domains (D) and the length of the intracellular tail whether this is long (L) or short (S). Moreover, based on their ability to activate immunoreceptor tyrosine-based activating motif (ITAM)-containing adapter DAP12 or immune tyrosine-based inhibitory motifs (ITIM)-based signaling pathways, KIR are classified as activating or inhibitory respectively [12].

The genes encoding KIR are located on the chromosome 19q13.4, within a 100–200 Kb region of the Leukocyte Receptor Complex (LRC), one of the most variable regions of the human genome in terms of gene content and sequence polymorphisms [13]. Currently, 13 distinct *KIR* gene loci and two pseudogenes have been described, including *KIR2DL1*, *KIR2DL23*, *KIR2DL4*, *KIR2DL5A*, *KIR2DL5B*, *KIR2DS1*, *KIR2DS2*, *KIR2DS3*, *KIR2DS4*, *KIR2DS5*, *KIR3DL1S1*, *KIR3DL2*, *KIR3DL3*, *KIR2DP1* and *KIR3DP1* [14]. *KIR* genes are classified in two functional haplotypes called A and B, each one showing variation in the number and type of *KIR* genes [15]. Group A or B haplotypes are characterized by the presence of four framework *KIR* genes (*KIR3DL3*, *KIR3DP1*, *KIR2DL4* and *KIR3DL2*) which are present in almost all individuals [16]. Group A haplotypes are generally non-variable in their gene organization, containing the framework genes, inhibitory *KIR* genes *KIR2DL1*, *KIR2DL3* and *KIR3DL1*, and the activating gene *KIR2DS4*. In contrast, Group B haplotypes are characterized by variations in gene content and they can include one or more of the following genes encoding the activating *KIR2DS1*, *KIR2DS2*, *KIR2DS3*, *KIR2DS5* and *KIR3DS1* and genes encoding the inhibitory *KIR2DL5* and *KIR2DL2* [17]. Based on this, individuals can be assigned to the A/A (homozygous for A), A/B or B/B genotype. Additionally, each haplotype has a region that exhibits a high relative asymmetric recombination rate, which divides the haplotype into a centromeric (Cen) and telomeric (Tel) region. The centromeric segment corresponds to the region including all genes located between *KIR3DL3* and *KIR3DP1* and the telomeric segment consists of all genes present between *KIR2DL4* and *KIR3DL2* [14].

The inhibitory receptors *KIR2DL1*, *KIR2DL2/3*, *KIR3DL1* and *KIR3DL2* are specific for the HLA class I ligands C2, C1, Bw4 and A3/11, respectively. In contrast, *KIR2DL4* binds to HLA-G, a non-classical HLA class I molecule. HLA class I ligands for *KIR3DL3* and *KIR2DL5* are still unknown, nevertheless *KIR2DL5* binds to the poliovirus receptor (PVR, CD155) [18,19], and *KIR3DL3* binds to HERV-H LTR-associating 2 (HHLA2; also known as B7H5 and B7H7) [20]. Ligands for activating KIR were elusive for many years due to the difficulty to demonstrate KIR/ligand interactions. It is now known that *KIR2DS1*, *KIR2DS2*, *KIR2DS4* and *KIR2DS5* bind specific group 1 and 2 HLA-C molecules, although with lower affinity than the inhibitory KIR. *KIR2DS2* and *KIR2DS4* also bind HLA-A*11 while *KIR3DS1* recognizes HLA-F or HLA-B*51 molecule [6,21].

Combinations of KIR and HLA polymorphisms have been associated with infections, autoimmune diseases, cancers, and pregnancy disorders. For instance, interaction between *KIR3DS1* and HLA-Bw4-I-80 isoform is associated with delayed progression to AIDS and HIV-infection [22]; homozygosity of HLA-C1 and *KIR2DL3* is associated with resolution of HCV infection [23]; combination of *KIR2DS1* and/or *KIR2DS2* with homozygosity of HLA-C1 or -C2 favors susceptibility to psoriatic arthritis [24]; *KIR2DS2* combined with HLA-C1 in the absence of HLA-C2 and HLA-Bw4 is associated with increased susceptibility

to type I diabetes [25]; HLA–KIR gene combinations that seem to favor NK cell activation are associated with predisposition to human papilloma virus (HPV)-induced cervical cancer [26]; whereas HLA–KIR gene combinations that seem to favor NK cell inhibition have been associated with preeclampsia [27]. Furthermore, expression of specific KIR alleles has been associated with better clinical outcomes in patients receiving hematopoietic cells transplant [28,29]. These findings highlight the contribution of HLA–KIR interaction to the outcome of various diseases and support the importance of including KIR analysis in future cell-based immunotherapies [30,31].

A comprehensive analysis of population-specific genes, genotype and haplotype frequencies of *KIR* might help to better understand their evolution and role in immunity. Although *KIR* gene and haplotype profiles have been studied worldwide, *KIR* diversity has not been extensively characterized in Colombia, a country with a high genetic admixture and combinations of genetic ancestry. At the time of sampling in 2019, *KIR* genes haplotypes have been only explored in two Colombian populations with very few individuals [32,33]. These studies analyzed different ancestral groups, with different genetic background. Hollenbach et al. investigated patterns of variation in the *KIR* cluster in 52 populations in the Human Genome Diversity Project—Centre d’Etude du Polymorphisme Humain (HGDP-CEPH). They included 110 individuals of 5 Amerindian populations (12 of Colombian Indigenous Piapoco–Curripako). The Amerindian populations did not exhibit high levels of genotypic diversity, but they displayed distinctive patterns unique to the region [32]. Bonilla et al. analyzed *KIR* genotypes in 119 unrelated individuals of Caucasoid and Afro-descendant populations from the Andean and Pacific region of Colombia, and found 59 different profiles [33].

Interest in the characterization of worldwide KIR diversity is ongoing due to the genetic variation of *KIR* being the single most important factor that shapes NK cell function. The available data related to KIR in human populations have increased and the discoveries about *KIR* polymorphism, *KIR* gene content, and copy number/*KIR* allelic variation have guided the research into the impact of *KIR* genetic variation on human health. In Colombian populations, this research has been almost null. The present study aimed to use current knowledge of *KIR* gene profiles to characterize the distribution of *KIR* genes, genotypes, and inferred haplotypes in an admixed Colombian population. Furthermore, we performed an extensive comparison of the *KIR* gene frequencies and genotypes of our population with other populations in our region and worldwide.

Despite being a descriptive study, our results represent one of the first approaches in the genetic variation of KIR research in Colombia, and we encourage future studies to obtain data using next generation technologies, with a greater number of individuals with different genetic background and from different country regions. Expanding our understanding of *KIR* genetic variation in Colombian populations and their comparison with other regions of the world might be useful for future research on ethnicity-based diseases. Furthermore, the understanding of KIR diversity can allow the identification of *KIR* and *HLA* genotypes that influence susceptibility to infectious, autoimmune diseases and the outcome of transplantation in our region.

2. Materials and Methods

2.1. Population and Samples

A total of 161 unrelated healthy individuals from Medellín, Colombia were included in the study. Medellín is located in the central region of the Andes Mountains in South America and its population shows a wide admixture contribution from ancestral source populations including European (75%), Native American (18%) and African (7%) descents [34].

We carried out a convenience sampling and we included 161 hematopoietic stem cell donors registered in the Instituto de Cancerología of the Clínica Las Américas, and the Laboratorio de Trasplantes of the Universidad de Antioquia, between 2004 and 2018. The convenience sampling strategy can be used in situations where time is a constraint, because this method allows quick data collection. It also allows researchers to generate

more samples with less or no investment and in a brief period. Another characteristic is that elements are easily accessible and samples are available to the researchers.

Between 2004 and 2018, the Instituto de Cancerología performed 347 transplants, of which 195 attended the Laboratorio de Trasplantes of the Universidad de Antioquia, to carry out the immunological studies. Of these, 161 donor-recipient pairs had DNA samples in optimal conditions for *KIR* typing. As part of the pre-transplant studies, donor-recipient pairs were typed for *HLA-A*, *-B*, *-DRβ*, *-DQβ* and *-DQα* alleles by PCR-SSP (sequence-specific primers) or PCR-SSO (sequence-specific oligonucleotides). In the particular case of the *HLA-C* allele, we had performed genotyping only since 2013 by PCR-SSO (88 pairs had not previously been genotyped for the *HLA-C* allele).

The study protocol was reviewed and approved by the local research Ethics Committee of Universidad de Antioquia and Clinica Las Americas, and all the samples used in this study were collected after an informed consent was obtained. Genomic DNA was extracted from peripheral blood using a modified salting-out procedure as previously reported [35]. DNA was spectrometrically quantified (NanoDrop™ 2000) and the integrity was assessed in a 2% agarose gel with GelRed Nucleic Acid Gel Stain (Biotium, Fremont, CA, USA).

2.2. *KIR* and *HLA* Class I Genotyping

Genomic DNA was used for *KIR* and *HLA* genotyping. For *KIR* genotyping, the presence or absence of the genes *KIR2DL1-5*, *KIR2DS1-5*, *KIR3DL1-3*, *KIR3DS1*, *KIR2DP1* and *KIR3DP1* was determined based on the oligonucleotide probe-hybridization method using the LIFECODES *KIR*-SSO typing Kit (Immucor, Peachtree Corners, GA, USA). Approximately 50 ng of genomic DNA were used for each PCR reaction and the amplification steps were performed according to the manufacturer instructions. To ensure accuracy in PCR reactions and hybridizations, two different internal controls (designated CON100 and CON200) were used to hybridize *KIR3DP1* and *KIR3DL3* respectively.

For the *HLA* genotyping, the *HLA-A* and *-B* genes were assessed using CTS-PCR-SSP Tray Kit (low resolution) or LIFECODES *HLA*-SSO Typing Kits (intermediate-resolution). For *HLA-C* typing we used SSO methodology. Approximately 100 ng of genomic DNA were used for each PCR reaction. Each kit contained two consensus SSO probes (designated CON200 and CON300) that hybridized to all alleles and acted as internal controls to verify amplification and to confirm that hybridizations occurred. PCR products from both kits were hybridized and measured separately using the Luminex 200™ System. For each *KIR*- and *HLA*-SSO typing at least 60 events for each of the Luminex Microspheres were collected.

2.3. *KIR* Gene, Genotype and Haplotype Frequencies Analysis

KIR gene frequencies were estimated from carrier frequencies obtained by direct counting. We used the Bernstein's equation $GF = 1 - \sqrt{1 - CF}$, where *CF* indicates carrier frequencies. For the same data, the confidence interval (IC) was calculated using the formula $GF \pm \varepsilon \sqrt{GF(1-GF)/n}$, where ε corresponds to standard error [36].

KIR genotype frequencies were determined with direct count according to the presence or absence of *KIR* genes. Genotype IDs for each sample were obtained from the Allele Frequency Net Database (AFND) (<http://www.allelefrequencies.net>, accessed on 28 July 2022). Genotypes that were not identified in the database were reported here as *NPR* (not previously reported). *KIR* haplotype diversity and frequencies were inferred using HAPLO-IHP (Haplotype inference using identified haplotype patterns) software [37]. For the inference of *KIR* haplotypes, we considered 23 reference haplotypes and patterns of linkage disequilibrium between pairs of *KIR* genes (Supplementary Table S1) [38]. Several assumptions were made for the analysis: (I) framework genes are always present in each haplotype, (II) if *KIR2DL5* is present then *KIR2DS3* and/or *KIR2DS5* are also present, (III) if *KIR2DL2* is present, *KIR2DL3* is absent and vice versa, (IV) if *KIR2DS4* is present, *KIR3DL1* is also present [39]. We used a set of haplotype patterns labeled with the nomenclature described by Vierra-Green et al. [40]. For instance, 'cA01~tB01 2DS5' is a full-length haplotype comprised of the first centromeric A region in *cis* with the first telomeric B region,

and this haplotype has the *KIR2DS5* gene [41]. We were not able to confidently identify the less common haplotypes, therefore, for the analyzes we only took into account those haplotypes inferred in at least eight individuals.

2.4. HLA–KIR Combinations in Medellin Population

The frequencies of different combinations of *KIR* and *HLA* ligands (*KIR2DL1* and *HLA-C2*, *KIR2DL2/3* and *HLA-C1* [42], *KIR3DL1* and *HLA-Bw4* [43], *KIR3DL2* and *HLA-A3/11* [44,45], *KIR2DS1* and *HLA-C2*, *KIR2DS2* and *HLA-C1* [42] or *HLA-A11*, *KIR3DS1* and *HLA-Bw4-80I* [6] and *KIR2DS4F* and *HLA-A3/11* [46]) were determined by presence and absence of *KIR* and *HLA* genes.

2.5. Statistical Analysis

KIR carrier frequencies of 41 world populations were obtained from AFND and summarized in Supplementary Table S2. We selected the populations if the 16 *KIR* genes were evaluated in at least 100 individuals. Additionally, we included 14 Amerindian populations, and two Brazilian populations with different ancestry, even though they had not studied the frequency of *KIR2DP1* and *KIR3DP1* genes (Supplementary Tables S2 and S3). Genetic distances were calculated by the Nei's method using PHYLIP software version 3.698 [47]. Distances among Central and South American and worldwide populations were calculated based on 16 *KIR* genes (*KIR2DL1*, *KIR2DL2*, *KIR2DL3*, *KIR2DL4*, *KIR2DL5*, *KIR2DS1*, *KIR2DS2*, *KIR2DS3*, *KIR2DS4*, *KIR2DS5*, *KIR3DS1*, *KIR3DL1*, *KIR3DL2*, *KIR3DL3*, *KIR2DP1* and *KIR3DP1*) carrier frequencies. For Amerindians, the distances were calculated based on 14 *KIR* genes (without *KIR2DP1* and *KIR3DP1*). Dendrograms based on genetic distance were constructed by the neighbor-joining (NJ) method, and visualized with MEGA-X software [48]. Principal component analysis (PCA) was performed in R version 4.0.3 using *KIR* carrier frequencies data. In the case of PCA biplots, dots represent PC scores of each population and the arrows represent the loadings of the *KIR* genes frequencies. Package "pheatmap" (<https://cran.r-project.org/web/packages/pheatmap/index.html>, accessed on 5 June 2022) based on statistical software R version 4.0.3, R Core Team, Vienna, Austria (<https://www.r-project.org/>, accessed on 5 June 2022) was used to draw a Heatmap containing Medellin and 14 other Central and South American populations or 41 worldwide populations with 16 *KIR* genes. Additionally, we drew a Heatmap containing Medellin and 57 other worldwide populations, including 14 Amerindian populations, with 14 *KIR* genes. The Heatmap is constructed using Hierarchical Clustering algorithm based on Euclidean distance.

3. Results

3.1. *KIR* Genes and Genotypes Frequencies in a Colombian Population

To characterize the diversity of *KIR* genotypes in an admixed South American population of Medellin, Colombia, we evaluated the presence or absence of 16 different *KIR* genes in 161 unrelated healthy individuals. Table 1 shows the frequencies of the tested *KIR* genes and their distribution in 37 different genotypes arranged according to the number of loci. As expected, the *KIR* genes *KIR3DL3*, *KIR3DP1*, *KIR2DL4* and *KIR3DL2* were present in all individuals. The most frequent genes detected in the Colombian population were: *KIR2DP1* (77.7%), *KIR2DL1* (77.7%), *KIR3DL1* (75.1%), *KIR2DS4* (73.9%) and *KIR2DL3* (66.6%). The *KIR2DS4* gene has two versions: one with the full-length and another with a deletion of 22bp in exon 5. In the Medellin population, *KIR2DS4F/KIR2DS4F*, *KIR2DS4F/KIR2DS4D* and *KIR2DS4D/KIR2DS4D* were present in 39.8%, 32.3% and 21.1% of all individuals (Gene Calculated Frequencies: 22.4%, 17.7% and 11.2% respectively).

Table 1. *KIR* gene and genotype frequencies.

Genotype	Genotype ID	A Haplotype Member				B Haplotype-Specific						Framework/Pseudogenes					N° loci	n	Genotype Frequencies (%)		
		2DL1	2DL3	3DL1	2DS4	2DL2	2DL5	2DS1	2DS2	2DS3	2DS5	3DS1	2DL4	3DL2	3DL3	2DP1				3DP1	
BX	2																	13	31	19.25	
BX	3																	15	28	17.39	
AA	1																	9	20	12.42	
BX	14																	10	12	7.453	
BX	4																	11	11	6.832	
BX	6																	16	8	4.969	
BX	71																	12	4	2.484	
BX	5																	13	4	2.484	
BX	68																	13	4	2.484	
BX	7																	15	4	2.484	
BX	69																	11	3	1.863	
BX	76																	12	3	1.863	
BX	72																	8	2	1.242	
BX	188																	12	2	1.242	
BX	13																	14	2	1.242	
BX	70																	14	2	1.242	
BX	<i>NPR1</i> ¹																	9	1	0.621	
BX	<i>NPR2</i> ¹																	10	1	0.621	
BX	106																	11	1	0.621	
BX	30																	11	1	0.621	
BX	16																	11	1	0.621	
BX	43																	11	1	0.621	
BX	228																	12	1	0.621	
BX	394																	12	1	0.621	
BX	27																	12	1	0.621	
BX	<i>NPR3</i> ¹																	12	1	0.621	
BX	81																	13	1	0.621	
BX	8																	13	1	0.621	
BX	680																	13	1	0.621	
BX	18																	14	1	0.621	
BX	12																	14	1	0.621	
BX	9																	14	1	0.621	
BX	118																	14	1	0.621	
BX	90																	14	1	0.621	
BX	401																	14	1	0.621	
BX	73																	15	1	0.621	
BX	58																	15	1	0.621	
Direct Count		153	143	151	150	87	111	96	86	32	92	115	161	161	161	153	161				
Carrier		95	88.8	93.8	93.2	54	68.9	59.6	53.4	19.9	57.1	71.4	100	100	100	95	100				
Frequencies (%)																					
Gene Frequencies (%)		77.7	66.6	75.1	73.9	32.2	44.3	36.5	31.8	10.5	34.5	46.5	100	100	100	77.7	100				
Confidence		73.2–	61.4–	70.4–	69.1–	27.1–	38.8–	31.2–	26.7–	7.1–	29.3–	41.1–				73.2–					
Interval (%)		82.2	71.7	79.8	78.7	37.3	49.7	41.7	36.8	13.8	39.7	52	100	100	100	82.2	100				

¹ *NPR*: Not previously reported.

In Supplementary Figures S1–S3 the deeper color represented higher observed frequency. We found all *KIR* genes are present in the Medellin population. Strikingly, we observed that the Medellin population had high frequencies for *KIR* genes associated to Group B haplotypes, especially *KIR3DS1*. When Medellin *KIR* genes frequencies were compared with Central and South American populations, we observed that the Uruguayan population had similar frequencies in genes of Group B (Supplementary Figure S1). Likewise, in worldwide populations, we observed that Medellin had similarities with Uruguayan, Indian [49] and Bogota populations [33]; where *KIR* activating genes were predominant (except for *KIR2DS3*) (Supplementary Figure S2). When Amerindian populations were included in the analysis, we observed that Warao [50], Yucpa [51] and Wichi [52] ethnic groups were clustered with the Colombian, Uruguayan and Indian populations [49,53] (Supplementary Figure S3).

We also characterized different *KIR* genotypes according to the set of *KIR* genes present per individual, which were numbered following known patterns of number and combination of genes (<http://www.allelefreqencies.net/kir.asp>, accessed on 28 July 2022). Genotypes 1, 2, 3, 4 and 14 were the most predominant in our population (63.34% of all individuals). Interestingly, in this study we found three *KIR* genotypes that have not been previously reported (*NPR*) for any other ethnic group. The first genotype was characterized by the presence of *KIR3DL3*, *KIR2DL5*, *KIR3DL1*, *KIR2DP1*, *KIR2DL1*, *KIR3DP1*, *KIR2DL4*, *KIR2DS4* and *KIR3DL2*; in the absence of *KIR2DS2*, *KIR2DL2*, *KIR2DL3*, *KIR2DS3*, *KIR3DS1*, *KIR2DS5* and *KIR2DS1* genes. The second genotype had *KIR3DL3*, *KIR2DS2*, *KIR2DL2*, *KIR2DL3*, *KIR3DL1*, *KIR3DP1*, *KIR2DL4*, *KIR3DS1*, *KIR2DS4* and *KIR3DL2*; in the absence of *KIR2DL5*, *KIR2DS3*, *KIR2DP1*, *KIR2DL1*, *KIR2DS5* and *KIR2DS1* genes. The third genotype was characterized by the presence of *KIR3DL3*, *KIR2DS2*, *KIR2DL2*, *KIR2DL3*, *KIR2DL5*, *KIR3DL1*, *KIR3DP1*, *KIR2DL4*, *KIR3DS1*, *KIR2DS5*, *KIR2DS1* and *KIR3DL2*; and the absence of *KIR2DS3*, *KIR2DP1*, *KIR2DL1* and *KIR2DS4* (Table 1).

3.2. Haplotype Frequencies

Based on *KIR* gene content analysis and using previously well-characterized haplotypes [38–41], we identified the most common haplotypes in the Medellin population (Table 2). The *KIR* reference haplotypes explained 92.24% of the haplotype variation in the Colombian population [37,41]. The most frequent haplotypes were: cA01~tA01 (41.6%); cA01~tB01 2DS5 (16.5%); cB02~tB01 (10.9%); cB02~tA01 (9.9%); cA01~tB05 (5.9%); cB01~tA01 2DS3 (5%) and cB01~tB01 2DS3 (2.5%) (Table 2). In 135 individuals (83.85%) both haplotypes could be resolved with the 7 inferred haplotypes, while in 24 individuals (14.91%) only one haplotype could be assigned.

Table 2. Most frequent *KIR* inferred haplotypes.

Haplotype	Nomenclature	Centromere							Telomere							Sample (2n = 322)		
		3DL3	2DS2	2DL2	2DL3	2DP1	2DL1	3DP1	2DL4	3DL1	3DS1	2DL5	2DS3	2DS5	2DS4	2DS1	3DL2	n
A1	cA01~tA01																134	41.615
B1	cA01~tB01 2DS5																53	16.46
B2	cB02~tB01																35	10.87
B3	cB02~tA01																32	9.938
B4	cA01~tB05																19	5.901
B5	cB01~tA01 2DS3																16	4.969
B6	cB01~tB01 2DS3																8	2.484

3.3. *KIR*-HLA Combinations

We also assessed the frequencies of known *HLA I* alleles identified as ligands of *KIR* molecules and further identified *KIR*-ligands sets more prevalent in our population. *HLA-C1* and *HLA-Bw4* alleles were predominant in our population and the frequency was in both cases above 85%. In contrast, the frequencies of *HLA-C2* and *HLA-A11/A3* were 58.39 and 22.36%, respectively (Figure 1).

KIR-ligand combinations were defined according to Ciosa et al. [54] considering the presence of *KIR* genes and their respective ligands described so far. For *KIR2DS4-A3/A11* we only considered full-length variant. The most frequent *KIR*-ligand pairs were the inhibitory combinations *KIR3DL1-Bw4* (81.4%), *KIR2DL3-C1* (75.2%) and *KIR2DL1-C2* (55.3%). In contrast, activating *KIR*-ligand pairs were expressed in a lower frequency: *KIR2DS4F-A3 A11* (14.3%), *KIR3DS1-Bw4-80I* (26.7%), *KIR2DS2-C1* (44.7%) and *KIR2DS1-C2* (36%) (Table 3).

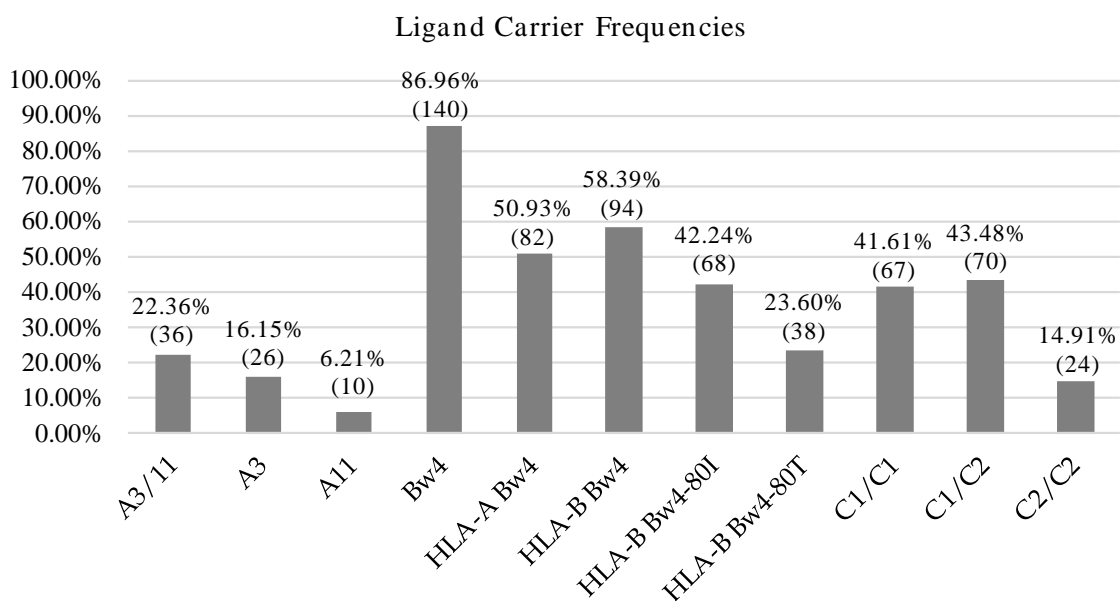


Figure 1. HLA allotype frequencies. Percentage and number of individuals carrying KIR ligands.

Table 3. KIR –HLA combinations.

	KIR/Ligand	Present/Present n (%)	Present/Absent n (%)	Absent/Present n (%)	Absent/Absent n (%)
Inhibition	2DL1/C2	89 (55.279)	64 (39.752)	5 (3.106)	3 (1.863)
	2DL2/C1	72 (44.720)	15 (9.317)	65 (40.373)	9 (5.590)
	2DL3/C1	121 (75.155)	22 (13.665)	16 (9.938)	2 (1.242)
	3DL1/Bw4	131 (81.367)	19 (11.801)	9 (5.590)	2 (1.242)
	3DL1/Bw4 (HLA-B)	86 (53.416)	64 (39.752)	8 (4.969)	3 (1.863)
	3DL1/Bw4 (HLA-A)	78 (48.447)	72 (44.720)	4 (2.485)	7 (4.348)
	3DL2/A3 A11	35 (21.739)	126 (78.261)	0 (0.00)	0 (0.00)
	3DL2/A3	26 (16.149)	135 (83.851)	0 (0.00)	0 (0.00)
	3DL2/A11	10 (6.211)	151 (93.789)	0 (0.00)	0 (0.00)
Activation	2DS1/C2	58 (36.025)	38 (23.603)	36 (22.360)	29 (18.012)
	2DS2/C1	72 (44.720)	14 (8.696)	65 (40.373)	10 (6.211)
	2DS2/HLA-C*16	5 (3.106)	81 (50.310)	8 (4.969)	67 (41.615)
	2DS2/A11	3 (1.863)	83 (51.553)	7 (4.348)	68 (42.236)
	2DS4F/A3 A11	23 (14.286)	93 (57.764)	13 (8.074)	32 (19.876)

All tested individuals had a least one inhibitory KIR–ligand pair. When we analyzed the presence of more than one pair, the most common combination was *KIR2DL2/3-C1 + KIR3DL1-Bw4* (36%), followed by *KIR2DL1-C2 + KIR2DL2/3-C1 + KIR3DL1-Bw4* (22.4%) and *KIR2DL1-C2 + KIR3DL1-Bw4* (9.3%). Finally, 19 individuals (11.8%) had all inhibitory KIR–ligand pairs evaluated (Table 4).

Table 4. Inhibitory KIR and HLA ligand pairs.

	KIR + HLA Ligand Pairs	Number Individuals (%)
1	<i>KIR2DL1 + C2</i>	2 (1.242)
	<i>KIR2DL2/3 + C1</i>	4 (2.485)
	<i>KIR3DL1 + Bw4</i>	1 (0.621)
	<i>KIR3DL2 + A3/11</i>	1 (0.621)
		8 (4.969)

Table 4. Cont.

	KIR + HLA Ligand Pairs	Number Individuals (%)	
2	<i>KIR2DL1 + C2</i> <i>KIR2DL2/3 + C1</i>	10 (6.211)	88 (54.658)
	<i>KIR2DL1 + C2</i> <i>KIR3DL1 + Bw4</i>	15 (9.317)	
	<i>KIR2DL1 + C2</i> <i>KIR3DL2 + A3/11</i>	1 (0.621)	
	<i>KIR2DL2/3 + C1</i> <i>KIR3DL1 + Bw4</i>	58 (36.025)	
	<i>KIR2DL2/3 + C1</i> <i>KIR3DL2 + A3/11</i>	3 (1.863)	
	<i>KIR3DL1 + Bw4</i> <i>KIR3DL2 + A3/11</i>	1 (0.621)	
3	<i>KIR2DL1 + C2</i> <i>KIR2DL2/3 + C1</i> <i>KIR3DL1 + Bw4</i>	36 (22.360)	46 (28.572)
	<i>KIR2DL1 + C2</i> <i>KIR2DL2/3 + C1</i> <i>KIR3DL2 + A3/11</i>	2 (1.242)	
	<i>KIR2DL2/3 + C1</i> <i>KIR3DL1 + Bw4</i> <i>KIR3DL2 + A3/11</i>	4 (2.485)	
	<i>KIR2DL1 + C2</i> <i>KIR3DL1 + Bw4</i> <i>KIR3DL2 + A3/11</i>	4 (2.485)	
4	<i>KIR2DL1 + C2</i> <i>KIR2DL2/3 + C1</i> <i>KIR3DL1 + Bw4</i> <i>KIR3DL2 + A3/11</i>	19 (11.801)	19 (11.801)

3.4. Genetic Distance Comparative Analysis with Regional and Worldwide Populations

Next, we compared the diversity of our admixed population from Medellin, Colombia with other populations from Central and South America, including Bogota, Colombia [28]; populations around the world; and Amerindian populations. For this, we performed genetic distances analysis based on the *KIR* gene carrier frequencies. We analyzed publicly available datasets of 43 populations, including 19 American ($n = 3569$), 14 Asian ($n = 3751$), 8 European ($n = 2196$) and 2 African ($n = 285$) populations. We also included 14 Amerindian populations ($n = 1099$).

KIR genes frequencies summarized in Supplementary Tables S2 and S3 were used to construct dendrograms based on a neighbor-joining (NJ) algorithm to estimate genetic distances between populations based on their gene frequencies and show these distances in a dendrogram that groups populations presenting similar frequencies. In Central and South American populations, we observed three clusters. The three Mexican populations evaluated clustered together with the Chilean and Venezuelan populations [55–57]. In addition, three out of the five Brazilian populations analyzed clustered with the Panamanian population [58–60] and the remaining two clustered with the Argentinian population [61]. Interestingly, Uruguayan and Colombian populations did not cluster with other Central and South American populations suggesting differences in the genetic composition of *KIR* genes (Figure 2). Between Bogota and Medellin populations the *KIR* gene frequencies variation was approximately 4.5%, while between Uruguayan and Medellin it was approximately 0.75%.

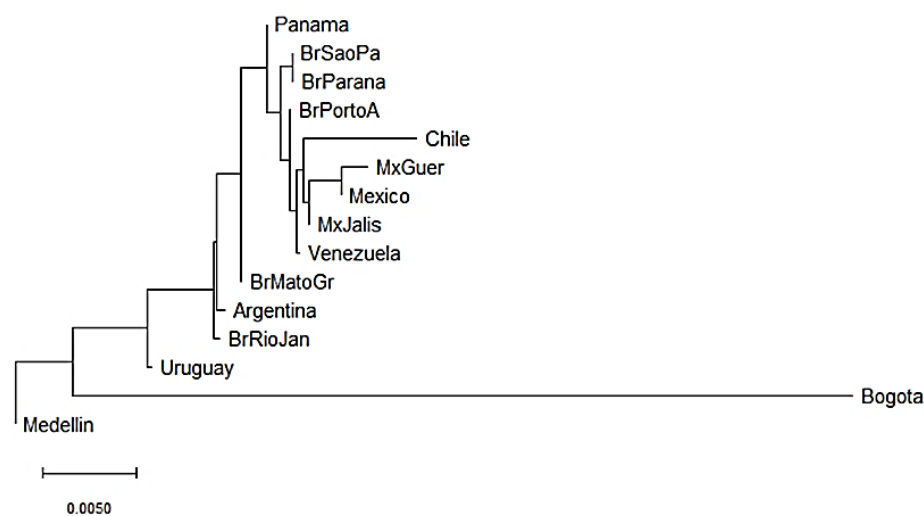


Figure 2. Neighbor-joining (NJ) dendrogram of Nei’s genetic distances among Central and South American populations, based on the KIR genes frequencies. The NJ dendrogram was constructed with 15 American populations from Brazil ($n = 1327$), Mexico ($n = 544$), Argentina ($n = 365$), Venezuela ($n = 205$), Panama ($n = 116$), Chile ($n = 90$), Uruguay ($n = 41$), Bogota—Colombia ($n = 119$) and Medellin—Colombia ($n = 161$). The bar suggests a 0.005 (0.5%) *KIR* gene frequencies variation for the length of the scale.

We also constructed a neighbor-joining (NJ) dendrogram to assess potential genetic relationships of the admixed population from Medellin Colombia with 41 worldwide populations (Figure 3). In the dendrogram, we identified four different clusters. A first cluster encompassed the two African populations (South African and Senegal) [62,63], and three Asian populations (Turkey [64], Iran [65] and Saudi Arabia). The European and American populations were combined in two further different clusters. The second cluster grouped French, Italian, Irish, Mexican, Brazilian, North American and Thai populations [55,58,60,63,66–69]. The third cluster included Brazilian, Argentine, English, Panamanian, Venezuelan, Spanish, Chilean, North American and Mexican populations [55–57,61,67,70]. Finally, the fourth cluster included seven of the 14 Asian populations, mainly Chinese populations [71–76]. Interestingly, of the two Colombian populations, the Bogota group showed a *KIR* composition similar to the Indian populations [49,53]. Surprisingly, the Medellin population clustered alone suggesting a particular *KIR* composition in this population (Figure 3).

Finally, we constructed three NJ dendrograms to assess potential genetic relationships of the admixed population from Medellin Colombia with Amerindian populations (Supplementary Figures S4–S6). In Supplementary Figure S4 we analyzed genetic distances among Colombian and Amerindian populations, and we identified two different clusters. The first cluster encompassed the Colombian populations with Venezuelan [50,51], Mexican [77] and Argentinean [52] ethnic groups. The second cluster grouped Brazilian and Paraguay Amerindian populations [78]. Interestingly, the Bogota group showed similar *KIR* frequencies to the Yucpa tribe from Venezuela [51], while the Medellin population clustered together Warao and Wichi tribes [50,52]. Supplementary Figure S5 shows genetic distances among admixed Central and South American and Amerindian populations, where we observed that the previous clustering patterns hold. Likewise, in Supplementary Figure S6 we note that Bogota–Yucpa and Medellin–Warao distances remained when genetic distances among worldwide and Amerindian populations were evaluated. As we observed in Figure 3, the Lucknow population from India [49], had similar *KIR* frequencies to the Bogota and Yucpa populations.

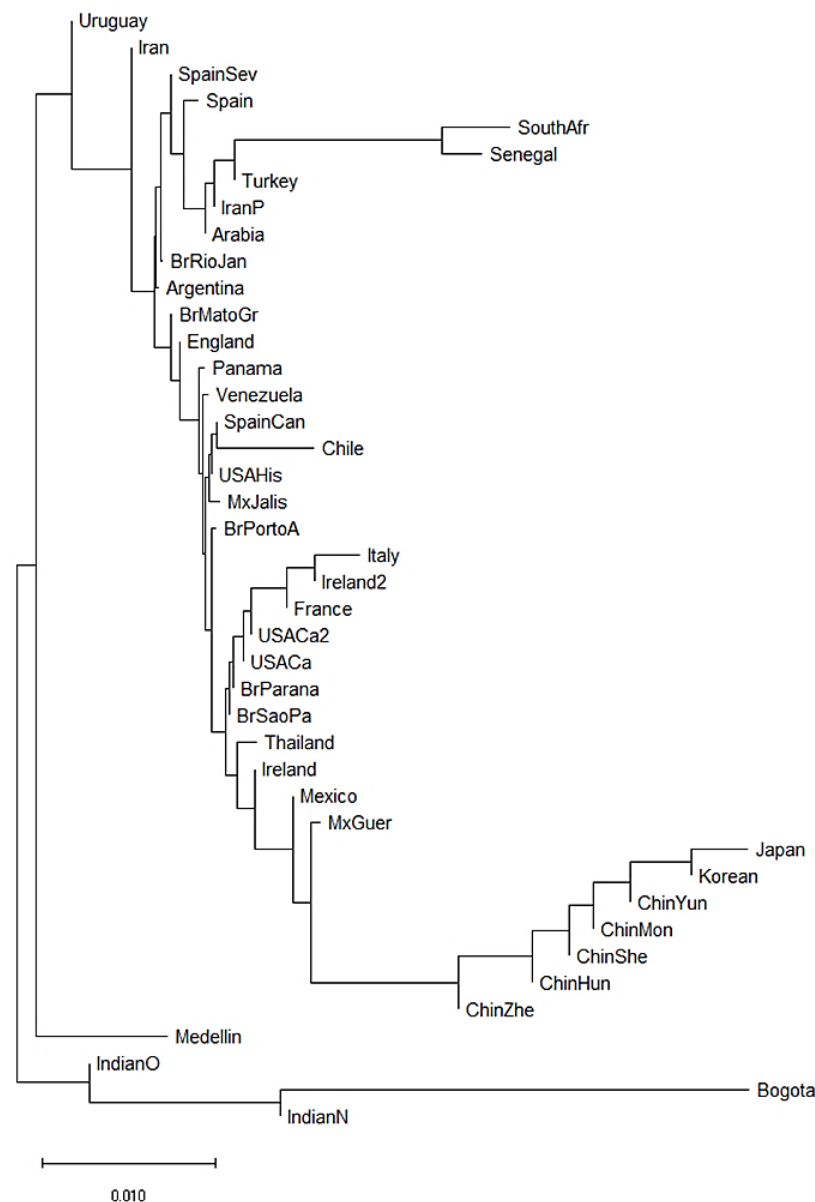


Figure 3. Neighbor-joining (NJ) dendrogram of Nei’s genetic distances among worldwide populations, based on the KIR genes frequencies. The NJ dendrogram was constructed with 42 populations from China ($n = 1788$), Brazil ($n = 1327$), Spain ($n = 847$), India ($n = 673$), England ($n = 584$), United States ($n = 578$), Mexico ($n = 544$), Iran ($n = 448$), Ireland ($n = 440$), Argentina ($n = 365$), Thailand ($n = 235$), Italy ($n = 237$), Venezuela ($n = 205$), South Africa ($n = 167$), Arabia ($n = 162$), South Korea ($n = 159$), Turkey ($n = 154$), Japan ($n = 132$), Senegal ($n = 118$), Panama ($n = 116$), France ($n = 108$), Chile ($n = 90$), Uruguay ($n = 41$), Bogota—Colombia ($n = 119$) and Medellin—Colombia ($n = 161$). The bar suggests a 0.01 (10%) KIR gene frequencies variation for the length of the scale.

We used a different approach to evaluate differences between the populations using Principal Component Analysis (PCA) based on the frequencies of the 16 KIR genes. This method converts the KIR genes frequencies into a set of values of linearly uncorrelated variables (principal components). On the PCA for Central and South America (Figure 4), Colombian populations clustered separately from the other 13 populations. This distribution is mainly driven by differences in two specific KIR: *KIR3DS1* and *KIR2DL3*. We found that Medellin exhibited the highest frequency of *KIR3DS1* (0.741), and this population was positively associated with the variable *KIR3DS1*. *KIR3DS1* frequency was the major

contributor to the variability in the Medellin population in relation to Central and South American populations.

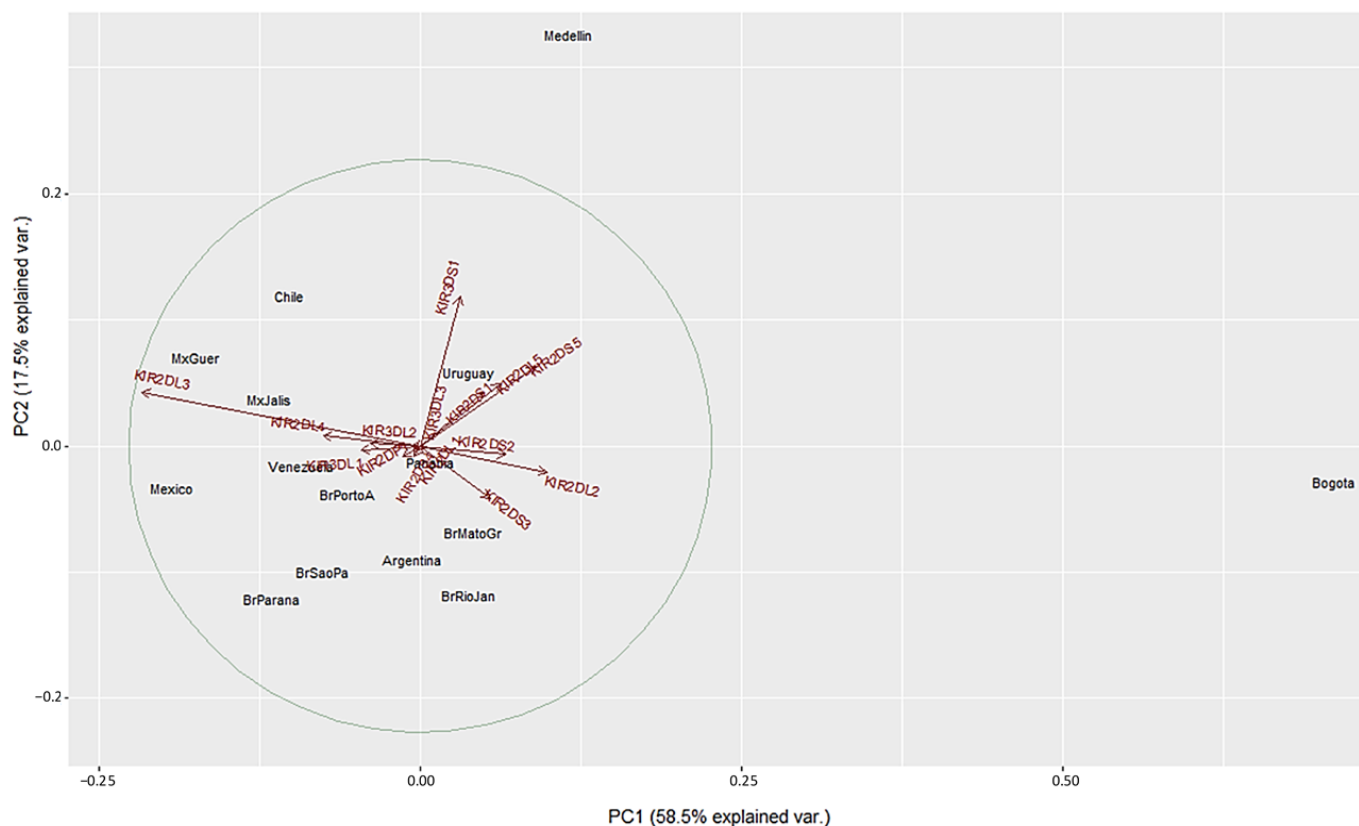


Figure 4. Principal component analysis based on 16 *KIR* genes for Central and South American populations. The circle indicates the correlation between *KIR* gene frequencies. Red arrows show the relative contribution of each *KIR* gene frequency to the variability along the first two axes (PC1 and PC2). PC1 was strongly correlated with *KIR2DL3* and *KIR2DL2* genes and PC2 was strongly correlated with *KIR3DS1* gene.

On the other hand, the Bogota population had the lowest *KIR2DL3* frequency (0.31), and this population was associated negatively with the variable *KIR2DL3* (Figure 4 and Supplementary Table S2). Unlike the NJ analysis, PCA analysis did not show other particular clustering between the Central and South American populations analyzed.

We next performed PCA analysis with the worldwide populations. Despite the marked differences in the NJ analysis, most of the worldwide populations did not show a clear grouping in the PCA with only twelve showing differential clustering. Seven out of the 14 Asian population clustered together in the right side of the biplot according to their highest *KIR2DL3* frequencies. Two Africans populations grouped in upper center according to the lowest *KIR3DS1* frequencies. Bogota clustered with Indian populations in the lower left side. In contrast, Medellin population showed genetic distance from the other populations evaluated, and this result can be explained by the highest *KIR3DS1* frequency observed in this population (Figure 5). These results are in concordance with the dendrograms previously described.

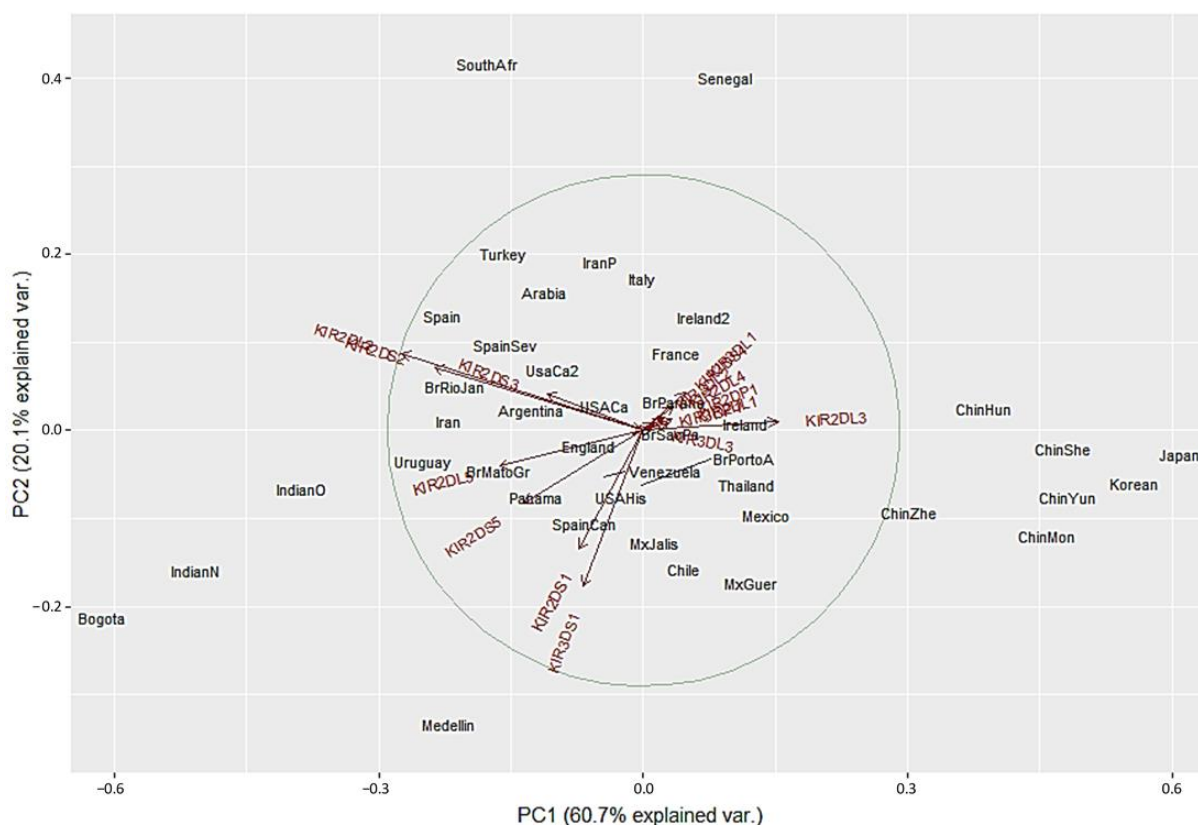


Figure 5. Principal component analysis for worldwide populations. The circle indicates the correlation between *KIR* gene frequencies. Red arrows show the relative contribution of each *KIR* gene frequency to the variability along the first two axes (PC1 and PC2). PC1 was strongly correlated with *KIR2DL3* and *KIR2DL2* genes and PC2 was strongly correlated with *KIR3DS1* gene.

Finally, we performed PCA analysis with the Amerindian populations (Supplementary Figures S7–S9) based on the frequencies of the 14 *KIR* genes. As observed in Supplementary Figure S4, Colombian populations clustered with Venezuelan and Argentinean ethnic groups. This distribution is mainly driven by differences in six *KIR*: *KIR2DL2* and *KIR2DS2*; and *KIR2DL5*, *KIR2DS5*, *KIR2DS1* and *KIR3DS1*. We found that Medellin exhibited higher frequencies of *KIR3DS1* (0.741), *KIR2DL5* (0.689), *KIR2DS1* (0.596) and *KIR2DS5* (0.571) and these frequencies were similar to Warao and Wichi populations. On the other hand, Bogota population had higher *KIR2DL2* (0.68) and *KIR2DS2* (0.58) frequencies, and these were similar to Yucpa tribe (Figure S7 and Supplementary Table S2). Supplementary Figure S9 shows PCA among worldwide and Amerindian populations and we observed that clustering remained according to the six *KIR* genes frequencies.

4. Discussion

Our study is the first to analyze the distribution of *KIR* genes, genotypes and haplotype combinations in an admixed population from Medellin, Colombia. We identified gene and genotypic variations with unique structural patterns that contributed to marked differences in *KIR* gene frequencies between our population and others from Central and South America, worldwide and Amerindians.

The most common *KIR* genes in the admixed population from Medellin, Colombia included *KIR2DL1*, *KIR3DL1*, *KIR2DS4* and *KIR2DL3*, which correlates with the most common *KIR* genes reported in diverse populations across the world. Other *KIR* genes, namely *KIR2DS2*, *KIR2DL2*, *KIR2DS5*, *KIR2DS1* and *KIR2DL5* were frequent in our population compared to reports from Uruguay, Indian and Amerindian populations and comparable to those observed in Central and South American populations [50,55,56,77,79–83].

In the Medellin population, the *KIR2DS3* gene was found in 10.5% of individuals, and the *KIR2DS1* and *KIR2DS5* genes in 36.5% and 34.5% respectively. Our data are in agreement with the results from Bonilla et al., who reported similar frequencies of the *KIR2DS3*, *KIR2DS1* and *KIR2DS5* genes in individuals from the Andean and Pacific region [33]. However, the frequencies of these *KIR* genes are different from those described in four American populations reported by Hollenbach et al. [32]. In particular, in the Piapoco-Curripako population (the Colombian indigenous group), the *KIR2DS3* gene was completely absent. Gendzekhadze et al. also observed that the *KIR2DS3* gene was not present in the Yucpa population from Venezuela [51]. *KIR2DS5* and *KIR2DS3* genes are located at the same *locus*, which is duplicated in the centromeric and telomeric motifs of the Bx haplotypes. Worldwide, in centromeric motifs, the *KIR2DS3* gene occurs more frequently than the *KIR2DS5* gene, while in Amerindian populations a fixation of the *KIR2DS5* allele was evidenced [32,50]. These differences may be due to genetic isolation of these populations, in addition to the limited number of individuals studied ($n = 12$ and 61 respectively).

Our results of *KIR* gene frequencies show a genetic organization in the Medellin population where the activating *KIR* are dominant compared to the inhibitory *KIR* isoforms (Table 1 and Supplementary Figures S1–S3). The low frequencies of the *KIR2DL2*, *KIR2DL3*, *KIR2DL1*, *KIR3DL1* and *KIR2DS4* genes are in agreement with the low frequencies of haplotype A in our population (13% haplotype A and 87% of haplotype B). These percentages are similar to other populations in Central and South America, where there is a predominance of Bx haplotypes [50,55,56,77,79–83]. Comparative analyses of *KIR* haplotypes by the Rajalingam group found an association between patterns of human prehistoric migration and the distribution of *KIR* haplotypes in different human populations [84]. Based on the distribution of *KIR* A and B haplotypes, the Rajalingam group divided the populations into three groups: populations carrying dominant A haplotypes (Asian populations), populations carrying dominant B haplotypes (American and Australian populations), and populations carrying balanced A and B haplotypes (European populations). A significant finding to emerge from this investigation is the clear dominance of *KIR* B haplotypes in the Medellin population, which coincides with Rajalingam patterns.

KIR diversity among different populations and ethnicities has been attributed to variations in genotype and haplotype frequencies. Additionally, polymorphisms in *KIR* genes, variations in gene content and gene copy numbers of each *KIR* haplotype also contribute to diversity in *KIR* expression [85]. There is a set of genotypes and haplotypes that typically explains up to 90% of the variations observed worldwide, even in geographically distant populations [37,86]. However, extensive variation in genotypes and haplotypes as well as virtual absence of the most common genotypes in some populations denotes the plasticity and high degree of variation in the gene content of the human *KIR* cluster [32].

Interestingly, we found three *KIR* genotypes that have not been previously described in the literature (Table 1). Among the new genotypes, *NPR1* had nine *KIR* genes, which is partially similar to the genotype described for Arnheim et al. [87] in a Swedish population. However, in their study, they did not confirm the presence of the *KIR2DP1* and *KIR3DP1* genes. *NPR2* genotype had ten *KIR* genes and was found to be similar to the genotype described in an individual from the Cook Islands [88], but unlike our data, the *KIR2DP1* gene was present. Finally, the gene composition pattern of *NPR3* genotype did not show similarities with any other genotypes described to date. These results support the idea that in Central and South American populations, the genotypic diversity is not high, but there are unique patterns found in the region.

In relation to haplotype frequencies in South American populations, previous works have shown a limited number of *KIR* gene content haplotypes in Amerindians populations (the estimated *KIR* gene-content haplotypes are shown in Supplementary Table S4). Taken together, these results validate our inferred haplotypes with the HAPLO-IHP software (the three most common haplotypes in our population were observed in Amerindian populations of Central and South America). However, family segregation studies or long-

range sequencing are needed to identify unknown haplotype structures or to precisely infer those haplotypes observed in lower frequencies. For example, de Brito Vargas et al. [78] identified haplotypes carrying large structural deletions or duplications involving multiple *loci*. Moreover, the low-frequency haplotypes are usually variations of the most common ones, differing by only a few alleles in some specific genes (allelic variation on *KIR3DL3* and *KIR3DL1* genes on centromeric and telomeric haplotypes respectively).

In relation to studies on *KIR* haplotypes, two important points are worth noting. First, in Amerindians populations have demonstrated a reduced *KIR* allelic richness compared with worldwide populations [50,51,78]. It must be taken into account that, at the allelic level, there may be low *KIR* diversity in our population. Second, our study population could exhibit an overall great population differentiation. The admixture and genetic heterogeneity are possibly resulting from different migration processes from other continents (e.g., during the Spanish colonization) and within the country, suggested by the results of our genetic distance analysis. Indeed, Conley et al. [89] used a dataset of 239,989 SNP in a comparative analysis of two Colombian populations (Chocó and Medellín), and they demonstrated that the Medellín population ($n = 94$) showed admixture events, with European–Native American admixture followed by subsequent African admixture. Additionally, the analysis of subcontinental ancestries in the study of Conley et al. [89] revealed that the African ancestry of Medellín was intermediate between Nigerian and other West African populations; the European fraction of Medellín was similar to the Spanish population; and Native America ancestry showed that the Medellín population grouped together with the Colombian Native American populations: Embera, Waunana, Arhuaco, Kogi and Wayuu. These findings underline a similar ancestral source population (in particular Native American Ancestry), with different relative frequencies of African and European ancestors, and these differences could explain variations in *KIR* gene frequencies among Colombian populations [89].

The analysis of several *KIR*-*HLA* combinations revealed that inhibitory combinations were the most frequent in the Medellín population. All the individuals in the Medellín population had at least one *KIR*-*HLA* pair, and 83.23% have two or three inhibitory *KIR*-*HLA* combinations. *KIR3DL1/Bw4* pair was present in 131 individuals in our cohort (81.4%). This frequency is above the worldwide frequencies, in contrast to e.g., American cohorts, in which about 29.4% (Veracruz—Mexico) to 68.6% (Havana, Cuba) of the individuals have the *KIR3DL1/Bw4* pair (<http://www.allelefreqencies.net/KIR-HLA/stats.asp>, accessed on 28 July 2022). *KIR3DL1/Bw4* (*HLA-A*) and *KIR3DL1/Bw4* (*HLA-B*) were present in 48.5% and 53.4% individuals respectively. These frequencies are higher than those observed in Amerindian populations, among which Guaraní Nandeva and Kaingang from Ivaí have the highest frequencies (5% and 13% for *KIR3DL1/Bw4* (*HLA-A*) and *KIR3DL1/Bw4* (*HLA-B*) respectively) [78]. *KIR2DL3/C1* pair was the second most common inhibitory combination (75.2%). This frequency is similar to that observed in worldwide populations, where the lowest values reported are 40% in Xhosa ethnic group from South Africa [90], and 41% in Kaiowá and Mbya Guaraní populations [78], while the highest values reported are 92% and 95.7% in Hong Kong and Singapore populations [91]. *KIR2DL1/C2* was observed in 55.3%, similar to the frequencies observed in Central and South American populations (lowest: 39.4% in Curitiba, Brazil individuals [92]; highest: 76.7% in Belo Horizonte, Brazil individuals). In Amerindians, the *KIR2DL1/C2* frequencies are lower, ranging from 6% in Guaraní Mbya to 26% in Aché from Paraguay [78]. Finally, the *KIR2DL2/C1* frequency in our population was 44.7%. In Central and South American populations these frequencies range from 23.5% in Curitiba [92] to 61% in Montevideo, Uruguay (<http://www.allelefreqencies.net/KIR-HLA/stats.asp>, accessed on 28 July 2022). Furthermore, *KIR2DL2* and *KIR2DL3* exhibit capability to bind *HLA-C* C2 allotype [93], although with low affinity. *KIR2DL2/C2* and *KIR3DL2/C2* frequencies were 29.8% and 50.9% respectively (data not shown).

Our genetic distance and PCA data presented in Figures 2–5 confirmed that *KIR* gene frequencies in our South American population are different compared with worldwide populations. Particularly in PCA, the first principal component (PC1) identified strongly

correlated with *KIR2DL3* and *KIR2DL2* genes whereas the PC2 strongly correlated with *KIR3DS1* gene. Medellin population showed genetic distance from the other populations in both PCA biplots and these differences may be explained by the highest frequency of *KIR3DS1* gene (71.4%) when compared to the others populations (Supplementary Table S2). *KIR3DS1* represents the only activating receptor with three extracellular domains and several studies have identified this gene to be associated with the outcome of various diseases, including viral infection like HIV-1 (slower progression to AIDS and lower viral load in individuals carrying *KIR3DS1* and *HLA-B Bw4 I80*) [22], HBV (increased rate of spontaneous recovery) [94] and HCV (viral clearance and sustained virological response) [95]. Moreover, *KIR3DS1* expression is associated with several malignancies including hepatocellular carcinoma, Hodgkin's lymphoma and respiratory papillomatosis (reduced risk) [96] or cervical neoplasia (increased risk) [26].

Finally, with regard to hematopoietic stem cell transplantation (HSCT), Gabriel et al. [97] showed a decreased progression-free survival of patients carrying *KIR3DS1* with multiple myeloma after autologous transplantation. In contrast, a beneficial effect of *KIR3DS1* in the context of unrelated HSCT has also been observed, showing a decreased acute graft-versus-host disease (GVHD) from transplantation with *KIR3DS1+* donors [98]. Due to the high frequency of *KIR3DS1* in the Medellin population, it would be important to evaluate its association with the previously listed diseases. In fact, in the context of identical related HSCT, we found that transplant patients whose donors were *KIR2DS1+* and *KIR3DS1+* had a 92% and 97% lower risk of acute GVHD respectively (unpublished data).

Using *KIR* as the panel of genetic marker, the results showed that Medellin had a close relationship with the Warao and Wichi ethnic groups, and we found three to five activating *KIR* and one to two inhibitory *KIR* genes of group B haplotype (*KIR2DL5*, *KIR2DS5*, *KIR2DS1* and *KIR3DS1*) were responsible for it. In previous studies, it has been argued that group B haplotypes may be under strong diversifying selection processes, related to several factors including reproduction, unfavorable genes that carry risk of autoimmunity or the creation or loss of novel functional genes to infection responses [86]. These processes ensure that the large majority of individuals within a population have different *KIR* genotypes, a situation analogous to that seen for HLA, and this diversity in human *KIR* genotype is probably the result of natural selection [54,99].

Our study has several limitations. First, we carried out a convenience sampling, so the results could not be generalized to a larger population. The Medellin population is highly mixed and potential bias of the sampling technique exists due to under-representation of subgroups in the sample. Second, genotyping methods used based on SSP and SSOP are prone to errors. HLA-SSP genotyping depends on the quality and quantity of the DNA used, therefore, PCR amplification failure could lead to a failure in typification result. Meanwhile, SSO genotyping depends on the hybridization process, and therefore, low bead count or low median fluorescent intensity value can lead to typing misunderstanding. Additionally, these methods cannot identify new alleles and allelic diversity, so there may be a deviation in the results on the genotypic and haplotypic diversity. Third, for NJ and PCA analyses, we included studies with heterogeneous methodologies and these may contain inaccurate data. Moreover, internal nodes of a dendrogram based on genetic distances do not necessarily represent common ancestry, and the similarities and differences between populations can be consequences of demographic factors. Despite these limitations this represents the first study to examine *KIR* diversity in an admixed Medellin—Colombian population. However, these findings will require validation in larger, multicenter datasets, with stratified random sampling and high-resolution genotyping technologies.

5. Conclusions

We report, for the first time, an analysis of *KIR* genotypes; observed carrier frequency; estimated genetic frequency and inferred haplotype patterns in an admixed Medellin—Colombian population. In particular, estimation of haplotype frequencies and *KIR*-HLA combinations as well as genetic distance and principal component analysis (PCA) with

several population groups from Central and South America, worldwide and Amerindian populations revealed distinct patterns of *KIR* genes and haplotypes in this population. Currently, efforts have been made to understand NK cell function and diversity through genetic studies and their association with disease susceptibility. Our findings on *KIR* genetic diversity and frequencies of *KIR-HLA* pairs in the Medellin population are likely to shed light on the formation of *KIR* repertoires and the potential implications in processes of NK cell education and function, and their impact in immune response against viral infections, anti-tumor response or transplant outcomes, however these associations remain unexplored in Colombia.

Supplementary Materials: The following supporting information can be downloaded at: <https://www.mdpi.com/article/10.3390/cells11182776/s1>, Table S1. Reference haplotypes. Supplementary Table S2. Worldwide *KIR* gene frequencies. Table S3. Amerindians *KIR* gene frequencies. Table S4. The most common estimated *KIR* haplotypes in Amerindians. Figure S1. Heatmap for *KIR* gene frequencies from South and Central American populations. Figure S2. Heatmap for *KIR* gene frequencies from worldwide populations. Figure S3. Heatmap for *KIR* gene frequencies from worldwide populations, including Amerindians. Figure S4. Neighbor-joining (NJ) dendrogram of Nei's genetic distances among Amerindian populations, based on the *KIR* genes frequencies. Figure S5. Neighbor-joining (NJ) dendrogram of Nei's genetic distances among Amerindian, Central and South American populations, based on the *KIR* genes frequencies. Figure S6. Neighbor-joining (NJ) dendrogram of Nei's genetic distances among worldwide populations, based on the *KIR* genes frequencies. Figure S7. Principal component analysis based on 14 *KIR* genes for Amerindian populations. Figure S8. Principal component analysis based on 14 *KIR* genes for Amerindian, Central and South American populations. Figure S9. Principal component analysis based on 14 *KIR* genes for worldwide populations, including Amerindians. Reference [100] is referred to in Supplementary Materials.

Author Contributions: Conceptualization, N.D.M., S.Y.V. and C.M.A.; Methodology, M.C. and A.J.K.-U.; Software, M.C.; Validation, M.C.; Formal analysis, M.C. and C.M.A.; Writing—original draft preparation, M.C.; Writing—review and editing, N.D.M., S.Y.V. and C.M.A.; Visualization, M.C.; Supervision, C.M.A.; Project administration, C.M.A.; Funding acquisition, N.D.M. and S.Y.V.; Co-Senior Authorship, S.Y.V. and C.M.A. All authors have read and agreed to the published version of the manuscript.

Funding: This research was funded by Convocatoria Programática Ciencias de la Salud—2015. Comité para el Desarrollo de la Investigación, CODI—Universidad de Antioquia (U-de-A), Medellín 050010, Colombia.

Institutional Review Board Statement: The study was conducted in accordance with the Declaration of Helsinki, and approved by Ethics Committee of Instituto de Investigaciones Médicas—Universidad de Antioquia (U-de-A), Medellín 050010, Colombia (certificate of approval No. 015—11 October 2018).

Informed Consent Statement: Informed consent was obtained from all subjects involved in the study.

Acknowledgments: We thank Angelica M. Cardona from Instituto de Cancerología Las Américas for help in database organization. We are also grateful to Mabel C. Giraldo, Cesar A. Buitrago and Juan J. Serrano from Universidad de Antioquia, for excellent technical assistance with Luminex assays; and greatly acknowledge to Instituto de Cancerología Las Américas for institutional support.

Conflicts of Interest: The authors declare no conflict of interest.

References

1. Valiante, N.M.; Lienert, K.; Shilling, H.G.; Smits, B.J.; Parham, P. Killer cell receptors: Keeping pace with MHC class I evolution. *Immunol. Rev.* **1997**, *155*, 155–164. [[CrossRef](#)] [[PubMed](#)]
2. Vilches, C.; Parham, P. *KIR*: Diverse, rapidly evolving receptors of innate and adaptive immunity. *Annu. Rev. Immunol.* **2002**, *20*, 217–251. [[CrossRef](#)] [[PubMed](#)]
3. van Bergen, J.; Thompson, A.; van der Slik, A.; Ottenhoff, T.H.; Gussekloo, J.; Koning, F. Phenotypic and functional characterization of CD4 T cells expressing killer Ig-like receptors. *J. Immunol.* **2004**, *173*, 6719–6726. [[CrossRef](#)]
4. Mingari, M.C.; Ponte, M.; Cantoni, C.; Vitale, C.; Schiavetti, F.; Bertone, S.; Bellomo, R.; Cappai, A.T.; Biassoni, R. HLA-class I-specific inhibitory receptors in human cytolytic T lymphocytes: Molecular characterization, distribution in lymphoid tissues and co-expression by individual T cells. *Int. Immunol.* **1997**, *9*, 485–491. [[CrossRef](#)] [[PubMed](#)]

5. De Libero, G. Control of gammadelta T cells by NK receptors. *Microbes Infect.* **1999**, *1*, 263–267. [[CrossRef](#)]
6. Pende, D.; Falco, M.; Vitale, M.; Cantoni, C.; Vitale, C.; Munari, E.; Bertaina, A.; Moretta, F.; Del Zotto, G.; Pietra, G.; et al. Killer Ig-Like Receptors (KIRs): Their Role in NK Cell Modulation and Developments Leading to Their Clinical Exploitation. *Front. Immunol.* **2019**, *28*, 1179. [[CrossRef](#)]
7. Höglund, P.; Brodin, P. Current perspectives of natural killer cell education by MHC class I molecules. *Nat. Rev. Immunol.* **2010**, *10*, 724–734. [[CrossRef](#)]
8. Horowitz, A.; Djaoud, Z.; Nemat-Gorgani, N.; Blokhuis, J.; Hilton, H.G.; Béziat, V.; Malmberg, K.J.; Norman, P.J.; Guethlein, L.A.; Parham, P. Class I HLA haplotypes form two schools that educate NK cells in different ways. *Sci. Immunol.* **2016**, *3*, eaag1672. [[CrossRef](#)]
9. Moretta, L.; Locatelli, F.; Pende, D.; Sivori, S.; Falco, M.; Bottino, C.; Mingari, M.C.; Moretta, A. Human NK receptors: From the molecules to the therapy of high risk leukemias. *FEBS Lett.* **2011**, *585*, 1563–1567. [[CrossRef](#)]
10. Vivier, E.; Tomasello, E.; Baratin, M.; Walzer, T.; Ugolini, S. Functions of natural killer cells. *Nat. Immunol.* **2008**, *9*, 503–510. [[CrossRef](#)]
11. Lanier, L.L. Up on the tightrope: Natural killer cell activation and inhibition. *Nat. Immunol.* **2008**, *9*, 495–502. [[CrossRef](#)] [[PubMed](#)]
12. Campbell, K.S.; Purdy, A.K. Structure/function of human killer cell immunoglobulin-like receptors: Lessons from polymorphisms, evolution, crystal structures and mutations. *Immunology* **2011**, *132*, 315–325. [[CrossRef](#)] [[PubMed](#)]
13. Wende, H.; Colonna, M.; Ziegler, A.; Volz, A. Organization of the leukocyte receptor cluster (LRC) on human chromosome 19q13.4. *Mamm. Genome.* **1999**, *10*, 154–160. [[CrossRef](#)]
14. Middleton, D.; Gonzelez, F. The extensive polymorphism of KIR genes. *Immunology* **2010**, *129*, 8–19. [[CrossRef](#)] [[PubMed](#)]
15. Uhrberg, M.; Valiante, N.M.; Shum, B.P.; Shilling, H.G.; Lienert-Weidenbach, K.; Corliss, B.; Tyan, D.; Lanier, L.L.; Parham, P. Human diversity in killer cell inhibitory receptor genes. *Immunity* **1997**, *7*, 753–763. [[CrossRef](#)]
16. Hsu, K.C.; Chida, S.; Geraghty, D.E.; Dupont, B. The killer cell immunoglobulin-like receptor (KIR) genomic region: Gene-order, haplotypes and allelic polymorphism. *Immunol. Rev.* **2002**, *190*, 40–52. [[CrossRef](#)]
17. Béziat, V.; Hilton, H.G.; Norman, P.J.; Traherne, J.A. Deciphering the killer-cell immunoglobulin-like receptor system at super-resolution for natural killer and T-cell biology. *Immunology* **2017**, *150*, 248–264. [[CrossRef](#)]
18. Husain, B.; Ramani, S.R.; Chiang, E.; Lehoux, I.; Paduchuri, S.; Arena, T.A.; Patel, A.; Wilson, B.; Chan, P.; Franke, Y.; et al. A Platform for Extracellular Interactome Discovery Identifies Novel Functional Binding Partners for the Immune Receptors B7-H3/CD276 and PVR/CD155. *Mol. Cell Proteom.* **2019**, *11*, 2310–2323. [[CrossRef](#)]
19. Fittje, P.; Hölzemer, A.; Garcia-Beltran, W.F.; Vollmers, S.; Niehrs, A.; Hagemann, K.; Martus, G.; Körner, C.; Kirchhoff, F.; Sauter, D.; et al. HIV-1 Nef-mediated downregulation of CD155 results in viral restriction by KIR2DL5+ NK cells. *PLoS Pathog.* **2022**, *18*, e1010572. [[CrossRef](#)]
20. Bhatt, R.S.; Berjís, A.; Konge, J.C.; Mahoney, K.M.; Klee, A.N.; Freeman, S.S.; Chen, C.H.; Jegede, O.A.; Catalano, P.J.; Pignon, J.C.; et al. KIR3DL3 Is an Inhibitory Receptor for HHLA2 that Mediates an Alternative Immunoinhibitory Pathway to PD1. *Cancer Immunol. Res.* **2021**, *9*, 156–169. [[CrossRef](#)]
21. Garcia-Beltran, W.F.; Hölzemer, A.; Martus, G.; Chung, A.W.; Pacheco, Y.; Simoneau, C.R.; Rucevic, M.; Lamothe-Molina, P.A.; Pertel, T.; Kim, T.E.; et al. Open conformers of HLA-F are high-affinity ligands of the activating NK-cell receptor KIR3DS1. *Nat. Immunol.* **2016**, *17*, 1067–1074. [[CrossRef](#)] [[PubMed](#)]
22. Martin, M.P.; Gao, X.; Lee, J.H.; Nelson, G.W.; Detels, R.; Goedert, J.J.; Buchbinder, S.; Hoots, K.; Vlahov, D.; Trowsdale, J.; et al. Epistatic interaction between KIR3DS1 and HLA-B delays the progression to AIDS. *Nat. Genet.* **2002**, *31*, 429–434. [[CrossRef](#)] [[PubMed](#)]
23. Khakoo, S.I.; Thio, C.L.; Martin, M.P.; Brooks, C.R.; Gao, X.; Astemborski, J.; Cheng, J.; Goedert, J.J.; Vlahov, D.; Hilgartner, M.; et al. HLA and NK cell inhibitory receptor genes in resolving hepatitis C virus infection. *Science* **2004**, *305*, 872–874. [[CrossRef](#)] [[PubMed](#)]
24. Nelson, G.W.; Martin, M.P.; Gladman, D.; Wade, J.; Trowsdale, J.; Carrington, M. Cutting edge: Heterozygote advantage in autoimmune disease: Hierarchy of protection/susceptibility conferred by HLA and killer Ig-like receptor combinations in psoriatic arthritis. *J. Immunol.* **2004**, *173*, 4273–4276. [[CrossRef](#)]
25. van der Slik, A.R.; Koeleman, B.P.; Verduijn, W.; Bruining, G.J.; Roep, B.O.; Giphart, M.J. KIR in type 1 diabetes: Disparate distribution of activating and inhibitory natural killer cell receptors in patients versus HLA-matched control subjects. *Diabetes.* **2003**, *52*, 2639–2642. [[CrossRef](#)]
26. Carrington, M.; Wang, S.; Martin, M.P.; Gao, X.; Schiffman, M.; Cheng, J.; Herrero, R.; Rodriguez, A.C.; Kurman, R.; Mortel, R.; et al. Hierarchy of resistance to cervical neoplasia mediated by combinations of killer immunoglobulin-like receptor and human leukocyte antigen loci. *J. Exp. Med.* **2005**, *201*, 1069–1075. [[CrossRef](#)]
27. Hiby, S.E.; Walker, J.J.; O’shaughnessy, K.M.; Redman, C.W.; Carrington, M.; Trowsdale, J.; Moffett, A. Combinations of maternal KIR and fetal HLA-C genes influence the risk of preeclampsia and reproductive success. *J. Exp. Med.* **2004**, *200*, 957–965. [[CrossRef](#)]
28. Sekine, T.; Marin, D.; Cao, K.; Li, L.; Mehta, P.; Shaim, H.; Sobieski, C.; Jones, R.; Oran, B.; Hosing, C.; et al. Specific combinations of donor and recipient KIR-HLA genotypes predict for large differences in outcome after cord blood transplantation. *Blood* **2016**, *128*, 297–312. [[CrossRef](#)]

29. Martínez-Losada, C.; Martín, C.; Gonzalez, R.; Manzanares, B.; García-Torres, E.; Herrera, C. Patients Lacking a KIR-Ligand of HLA Group C1 or C2 Have a Better Outcome after Umbilical Cord Blood Transplantation. *Front. Immunol.* **2017**, *13*, 810. [[CrossRef](#)]
30. Solloch, U.V.; Schefzyk, D.; Schäfer, G.; Massalski, C.; Kohler, M.; Pruschke, J.; Heidl, A.; Schetelig, J.; Schmidt, A.H.; Lange, V.; et al. Estimation of German KIR Allele Group Haplotype Frequencies. *Front. Immunol.* **2020**, *11*, 429. [[CrossRef](#)]
31. Shin, M.H.; Kim, J.; Lim, S.A.; Kim, J.; Kim, S.J.; Lee, K.M. NK Cell-Based Immunotherapies in Cancer. *Immune. Netw.* **2020**, *9*, e14. [[CrossRef](#)] [[PubMed](#)]
32. Hollenbach, J.A.; Nocedal, I.; Ladner, M.B.; Single, R.M.; Trachtenberg, E.A. Killer cell immunoglobulin-like receptor (KIR) gene content variation in the HGDP-CEPH populations. *Immunogenetics* **2012**, *64*, 719–737. [[CrossRef](#)] [[PubMed](#)]
33. Bonilla, C.; Yunis, E.J.; Yunis, J.J. Diversity of KIR profiles in Colombian populations. In Proceedings of the 36th Annual ASHI Meeting Abstracts 2010, Hollywood, FL, USA, 26–30 September 2009; p. S74. [[CrossRef](#)]
34. Rishishwar, L.; Conley, A.B.; Wigington, C.H.; Wang, L.; Valderrama-Aguirre, A.; Jordan, I.K. Ancestry, admixture and fitness in Colombian genomes. *Sci. Rep.* **2015**, *5*, 12376. [[CrossRef](#)] [[PubMed](#)]
35. Nasiri, H.; Forouzandeh, M.; Rasaee, M.J.; Rahbarizadeh, F. Modified salting-out method: High-yield, high-quality genomic DNA extraction from whole blood using laundry detergent. *J. Clin. Lab. Anal.* **2005**, *19*, 229–232. [[CrossRef](#)]
36. Mack, S.J.; Gourraud, P.A.; Single, R.M.; Thomson, G.; Hollenbach, J.A. Analytical methods for immunogenetic population data. In *Immunogenetics: Methods and Applications in Clinical Practice*; Christiansen, F.T., Tait, B.D., Eds.; Humana Press: Totowa, NJ, USA, 2012; pp. 215–241. [[CrossRef](#)]
37. Yoo, Y.J.; Tang, J.; Kaslow, R.A.; Zhang, K. Haplotype inference for present-absent genotype data using previously identified haplotypes and haplotype patterns. *Bioinformatics* **2007**, *23*, 2399–2406. [[CrossRef](#)]
38. Pyo, C.W.; Guethlein, L.A.; Vu, Q.; Wang, R.; Abi-Rached, L.; Norman, P.J.; Marsh, S.G.; Miller, J.S.; Parham, P.; Geraghty, D.E. Different patterns of evolution in the centromeric and telomeric regions of group A and B haplotypes of the human killer cell Ig-like receptor locus. *PLoS ONE* **2010**, *5*, e15115. [[CrossRef](#)]
39. Gourraud, P.A.; Meenagh, A.; Cambon-Thomsen, A.; Middleton, D. Linkage disequilibrium organization of the human KIR superlocus: Implications for KIR data analyses. *Immunogenetics* **2010**, *62*, 729–740. [[CrossRef](#)]
40. Vierra-Green, C.; Roe, D.; Hou, L.; Hurley, C.K.; Rajalingam, R.; Reed, E.; Lebedeva, T.; Yu, N.; Stewart, M.; Noreen, H.; et al. Allele-level haplotype frequencies and pairwise linkage disequilibrium for 14 KIR loci in 506 European-American individuals. *PLoS ONE* **2012**, *7*, e47491. [[CrossRef](#)]
41. Vierra-Green, C.; Roe, D.; Jayaraman, J.; Trowsdale, J.; Traherne, J.; Kuang, R.; Spellman, S.; Maiers, M. Estimating KIR Haplotype Frequencies on a Cohort of 10,000 Individuals: A Comprehensive Study on Population Variations, Typing Resolutions, and Reference Haplotypes. *PLoS ONE* **2016**, *11*, e0163973. [[CrossRef](#)]
42. Hilton, H.G.; Guethlein, L.A.; Goyos, A.; Nemat-Gorgani, N.; Bushnell, D.A.; Norman, P.J.; Parham, P. Polymorphic HLA-C Receptors Balance the Functional Characteristics of KIR Haplotypes. *J. Immunol.* **2015**, *195*, 3160–3170. [[CrossRef](#)]
43. Foley, B.A.; De Santis, D.; Van Beelen, E.; Lathbury, L.J.; Christiansen, F.T.; Witt, C.S. The reactivity of Bw4+ HLA-B and HLA-A alleles with KIR3DL1: Implications for patient and donor suitability for haploidentical stem cell transplantations. *Blood* **2008**, *112*, 435–443. [[CrossRef](#)] [[PubMed](#)]
44. Döhning, C.; Scheidegger, D.; Samaridis, J.; Cella, M.; Colonna, M. A human killer inhibitory receptor specific for HLA-A12. *J. Immunol.* **1996**, *156*, 3098–3101.
45. Hansasuta, P.; Dong, T.; Thananchai, H.; Weekes, M.; Willberg, C.; Aldemir, H.; Rowland-Jones, S.; Braud, V.M. Recognition of HLA-A3 and HLA-A11 by KIR3DL2 is peptide-specific. *Eur. J. Immunol.* **2004**, *34*, 1673–1679. [[CrossRef](#)]
46. Moesta, A.K.; Graef, T.; Abi-Rached, L.; Older Aguilar, A.M.; Guethlein, L.A.; Parham, P. Humans differ from other hominids in lacking an activating NK cell receptor that recognizes the C1 epitope of MHC class I. *J. Immunol.* **2010**, *185*, 4233–4237. [[CrossRef](#)]
47. Felsenstein, J. *PHYMLIP (Phylogeny Inference Package) Version 3.698*; Distributed by the author; Department of Genome Sciences, University of Washington: Seattle, DC, USA, 2005.
48. Kumar, S.; Stecher, G.; Li, M.; Nnyaz, C.; Tamura, K. MEGA X: Molecular Evolutionary Genetics Analysis across computing platforms. *Mol. Biol. Evol.* **2018**, *35*, 1547–1549. [[CrossRef](#)]
49. Prakash, S.; Alam, S.; Sharma, R.K.; Sonawane, A.; Imran, M.; Agrawal, S. Distribution of Killer cell immunoglobulin like receptor genes in end stage renal disease among North Indian population. *Hum. Immunol.* **2013**, *74*, 1339–1345. [[CrossRef](#)] [[PubMed](#)]
50. Gendzekhadze, K.; Norman, P.J.; Abi-Rached, L.; Layrisse, Z.; Parham, P. High KIR diversity in Amerindians is maintained using few gene-content haplotypes. *Immunogenetics* **2006**, *58*, 474–480. [[CrossRef](#)] [[PubMed](#)]
51. Gendzekhadze, K.; Norman, P.J.; Abi-Rached, L.; Graef, T.; Moesta, A.K.; Layrisse, Z.; Parham, P. Co-evolution of KIR2DL3 with HLA-C in a human population retaining minimal essential diversity of KIR and HLA class I ligands. *Proc. Natl. Acad. Sci. USA* **2009**, *106*, 18692–18697. [[CrossRef](#)]
52. Flores, A.C.; Marcos, C.Y.; Paladino, N.; Capucchio, M.; Theiler, G.; Arruvito, L.; Pardo, R.; Habegger, A.; Williams, F.; Middleton, D.; et al. KIR genes polymorphism in Argentinean Caucosoid and Amerindian populations. *Tissue Antigens* **2007**, *69*, 568–576. [[CrossRef](#)]
53. D’Silva, S.Z.; Dhanda, S.K.; Singh, M. Killer immunoglobulin like receptor gene profiling in Western Indian population. *Hum. Immunol.* **2019**, *80*, 427–428. [[CrossRef](#)]

54. Closa, L.; Vidal, F.; Herrero, M.J.; Caro, J.L. Distribution of human killer cell immunoglobulin-like receptors and ligands among blood donors of Catalonia. *HLA* **2020**, *95*, 179–188. [[CrossRef](#)]
55. Machado-Sulbaran, A.C.; Muñoz-Valle, J.F.; Ramírez-Dueñas, M.G.; Baños-Hernández, C.J.; Graciano-Machuca, O.; Velarde-De la Cruz, E.E.; Parra-Rojas, I.; Sánchez-Hernández, P.E. Distribution of KIR genes and KIR2DS4 gene variants in two Mexican Mestizo populations. *Hum. Immunol.* **2017**, *78*, 614–620. [[CrossRef](#)]
56. Castro-Santos, P.; Verdugo, R.A.; Díaz-Peña, R. Killer cell immunoglobulin-like receptor genotypes in a Chilean population from Talca. *Hum. Immunol.* **2018**, *79*, 651–652. [[CrossRef](#)] [[PubMed](#)]
57. Conesa, A.; Fernández-Mestre, M.; Padrón, D.; Toro, F.; Silva, N.; Tassinari, P.; Blanca, I.; Martin, M.P.; Carrington, M.; Layrisse, Z. Distribution of killer cell immunoglobulin-like receptor genes in the mestizo population from Venezuela. *Tissue Antigens* **2010**, *75*, 724–729. [[CrossRef](#)]
58. Franceschi, D.S.; Mazini, P.S.; Rudnick, C.C.; Sell, A.M.; Tsuneto, L.T.; de Melo, F.C.; Braga, M.A.; Peixoto, P.R.; Visentainer, J.E. Association between killer-cell immunoglobulin-like receptor genotypes and leprosy in Brazil. *Tissue Antigens* **2008**, *72*, 478–482. [[CrossRef](#)]
59. Perce-da-Silva, D.S.; Silva, L.A.; Lima-Junior, J.C.; Cardoso-Oliveira, J.; Ribeiro-Alves, M.; Santos, F.; Porto, L.C.; Oliveira-Ferreira, J.; Banic, D.M. Killer cell immunoglobulin-like receptor (KIR) gene diversity in a population naturally exposed to malaria in Porto Velho, Northern Brazil. *Tissue Antigens* **2015**, *85*, 190–199. [[CrossRef](#)]
60. Marangon, A.V.; Silva, G.F.; de Moraes, C.F.; Grotto, R.M.; Pardini, M.I.; de Pauli, D.S.; Sell, A.M.; Visentainer, J.E.; Moliterno, R.A. KIR genes and their human leukocyte antigen ligands in the progression to cirrhosis in patients with chronic hepatitis C. *Hum. Immunol.* **2011**, *72*, 1074–1078. [[CrossRef](#)]
61. Augusto, D.G.; Lobo-Alves, S.C.; Melo, M.F.; Pereira, N.F.; Petzl-Erler, M.L. Activating KIR and HLA Bw4 ligands are associated to decreased susceptibility to pemphigus foliaceus, an autoimmune blistering skin disease. *PLoS ONE* **2012**, *7*, e39991. [[CrossRef](#)]
62. Gentle, N.L.; Loubser, S.; Paximadis, M.; Puren, A.; Tiemessen, C.T. Killer-cell immunoglobulin-like receptor (KIR) and human leukocyte antigen (HLA) class I genetic diversity in four South African populations. *Hum. Immunol.* **2017**, *c8*, 503–509. [[CrossRef](#)]
63. Denis, L.; Sivula, J.; Gourraud, P.A.; Kerdudou, N.; Chout, R.; Ricard, C.; Moisan, J.P.; Gagne, K.; Partanen, J.; Bignon, J.D. Genetic diversity of KIR natural killer cell markers in populations from France, Guadeloupe, Finland, Senegal and Réunion. *Tissue Antigens* **2005**, *66*, 267–276. [[CrossRef](#)]
64. Middleton, D.; Meenagh, A.; Sleator, C.; Gourraud, P.A.; Ayna, T.; Tozki, H.; Köse, A.A.; Azizleri, G.; Diler, A.S. No association of KIR genes with Behcet’s disease. *Tissue Antigens* **2007**, *70*, 435–438. [[CrossRef](#)]
65. Ashouri, E.; Farjadian, S.; Reed, E.F.; Ghaderi, A.; Rajalingam, R. KIR gene content diversity in four Iranian populations. *Immunogenetics* **2009**, *61*, 483–492. [[CrossRef](#)] [[PubMed](#)]
66. Keating, S.E.; Ni Chorcora, C.; Dring, M.M.; Stallings, R.L.; O’Meara, A.; Gardiner, C.M. Increased frequencies of the killer immunoglobulin-like receptor genes KIR2DL2 and KIR2DS2 are associated with neuroblastoma. *Tissue Antigens* **2015**, *86*, 172–177. [[CrossRef](#)]
67. Du, Z.; Gjertson, D.W.; Reed, E.F.; Rajalingam, R. Receptor-ligand analyses define minimal killer cell Ig-like receptor (KIR) in humans. *Immunogenetics* **2007**, *59*, 1–15. [[CrossRef](#)] [[PubMed](#)]
68. Hollenbach, J.A.; Meenagh, A.; Sleator, C.; Alaez, C.; Bengoche, M.; Canossi, A.; Contreras, G.; Creary, L.; Evseeva, I.; Gorodezky, C.; et al. Report from the killer immunoglobulin-like receptor (KIR) anthropology component of the 15th International Histocompatibility Workshop: Worldwide variation in the KIR loci and further evidence for the co-evolution of KIR and HLA. *Tissue Antigens* **2010**, *76*, 9–17. [[CrossRef](#)] [[PubMed](#)]
69. Chaisri, S.; Kitcharoen, K.; Romphruk, A.V.; Romphruk, A.; Witt, C.S.; Leelayuwat, C. Polymorphisms of killer immunoglobulin-like receptors (KIRs) and HLA ligands in northeastern Thais. *Immunogenetics* **2013**, *65*, 645–653. [[CrossRef](#)]
70. Hiby, S.E.; Ashrafian-Bonab, M.; Farrell, L.; Single, R.M.; Balloux, F.; Carrington, M.; Moffett, A.; Ebrahimi, Z. Distribution of killer cell immunoglobulin-like receptors (KIR) and their HLA-C ligands in two Iranian populations. *Immunogenetics* **2010**, *62*, 65–73. [[CrossRef](#)]
71. Cai, J.; Liu, X.; Wang, J.; Tian, W. Killer cell immunoglobulin-like receptor (KIR) genes in 4 distinct populations and 51 families in mainland China. *Hum. Immunol.* **2012**, *73*, 1023–1030. [[CrossRef](#)]
72. Zhen, J.; Wang, D.; He, L.; Zou, H.; Xu, Y.; Gao, S.; Yang, B.; Deng, Z. Genetic profile of KIR and HLA in southern Chinese Han population. *Hum. Immunol.* **2014**, *75*, 59–64. [[CrossRef](#)]
73. Shi, L.; Zhang, H.; Shen, Y.; Dong, Y.; Li, Y.; Dong, Z.; Guo, C.; Shi, L.; Yao, Y.; Yu, J. Distribution of KIR genes in Han population in Yunnan Province: Comparison with other Han populations in China. *Int. J. Immunogenet.* **2013**, *40*, 361–368. [[CrossRef](#)]
74. Tao, S.; He, Y.; Dong, L.; He, J.; Chen, N.; Wang, W.; Han, Z.; Zhang, W.; He, J.; Zhu, F. Associations of killer cell immunoglobulin-like receptors with acute myeloid leukemia in Chinese populations. *Hum. Immunol.* **2017**, *78*, 269–273. [[CrossRef](#)] [[PubMed](#)]
75. Yawata, M.; Yawata, N.; Draghi, M.; Little, A.M.; Partheniou, F.; Parham, P. Roles for HLA and KIR polymorphisms in natural killer cell repertoire selection and modulation of effector function. *J. Exp. Med.* **2006**, *203*, 633–645. [[CrossRef](#)]
76. Kim, H.J.; Choi, H.B.; Jang, J.P.; Baek, I.C.; Choi, E.J.; Park, M.; Kim, T.G.; Oh, S.T. HLA-Cw polymorphism and killer cell immunoglobulin-like receptor (KIR) gene analysis in Korean colorectal cancer patients. *Int. J. Surg.* **2014**, *12*, 815–820. [[CrossRef](#)] [[PubMed](#)]

77. Gutiérrez-Rodríguez, M.E.; Sandoval-Ramírez, L.; Díaz-Flores, M.; Marsh, S.G.; Valladares-Salgado, A.; Madrigal, J.A.; Mejía-Arangure, J.M.; García, C.A.; Huerta-Zepeda, A.; Ibarra-Cortés, B.; et al. KIR gene in ethnic and Mestizo populations from Mexico. *Hum. Immunol.* **2006**, *67*, 85–93. [[CrossRef](#)] [[PubMed](#)]
78. Vargas, L.B.; Beltrame, M.H.; Ho, B.; Marin, W.M.; Dandekar, R.; Montero-Martín, G.; Fernández-Viña, M.A.; Hurtado, A.M.; Hill, K.R.; Tsuneto, L.T.; et al. Remarkably Low KIR and HLA Diversity in Amerindians Reveals Signatures of Strong Purifying Selection Shaping the Centromeric KIR Region. *Mol. Biol. Evol.* **2022**, *39*, msab298. [[CrossRef](#)] [[PubMed](#)]
79. Augusto, D.G.; Piovezan, B.Z.; Tsuneto, L.T.; Callegari-Jacques, S.M.; Petzl-Erler, M.L. KIR gene content in Amerindians indicates influence of demographic factors. *PLoS ONE* **2013**, *8*, e56755. [[CrossRef](#)]
80. Single, R.M.; Martin, M.P.; Gao, X.; Meyer, D.; Yeager, M.; Kidd, J.R.; Kidd, K.K.; Carrington, M. Global diversity and evidence for coevolution of KIR and HLA. *Nat. Genet.* **2007**, *39*, 1114–1119. [[CrossRef](#)]
81. Ewerton, P.D.; Leite Mde, M.; Magalhães, M.; Sena, L.; Melo dos Santos, E.J. Amazonian Amerindians exhibit high variability of KIR profiles. *Immunogenetics* **2007**, *59*, 625–630. [[CrossRef](#)]
82. Augusto, D.G.; Amorim, L.M.; Farias, T.D.; Petzl-Erler, M.L. KIR and HLA genotyping of Japanese descendants from Curitiba, a city of predominantly European ancestry from Southern Brazil. *Hum. Immunol.* **2016**, *77*, 336–337. [[CrossRef](#)]
83. de Alencar, J.B.; Zacarias, J.M.V.; Moura, B.L.D.S.G.; Braga, M.A.; Visentainer, J.E.L.; Sell, A.M. KIR and HLA ligands demonstrate genetic inheritance diversity in Japanese descendants from Paraná, Brazil. *Hum. Immunol.* **2018**, *79*, 191–192. [[CrossRef](#)]
84. Rajalingam, R.; Du, Z.; Meenagh, A.; Luo, L.; Kavitha, V.J.; Pavithra-Arulvani, R.; Vidhyalakshmi, A.; Sharma, S.K.; Balazs, I.; Reed, E.F.; et al. Distinct diversity of KIR genes in three southern Indian populations: Comparison with world populations revealed a link between KIR gene content and pre-historic human migrations. *Immunogenetics* **2008**, *60*, 207–217. [[CrossRef](#)] [[PubMed](#)]
85. Shilling, H.G.; Guethlein, L.A.; Cheng, N.W.; Gardiner, C.M.; Rodriguez, R.; Tyan, D.; Parham, P. Allelic polymorphism synergizes with variable gene content to individualize human KIR genotype. *J. Immunol.* **2002**, *168*, 2307–2315. [[CrossRef](#)] [[PubMed](#)]
86. Jiang, W.; Johnson, C.; Jayaraman, J.; Simecek, N.; Noble, J.; Moffatt, M.F.; Cookson, W.O.; Trowsdale, J.; Traherne, J.A. Copy number variation leads to considerable diversity for B but not A haplotypes of the human KIR genes encoding NK cell receptors. *Genome Res.* **2012**, *22*, 1845–1854. [[CrossRef](#)] [[PubMed](#)]
87. Arnheim, L.; Dillner, J.; Sanjeevi, C.B. A population-based cohort study of KIR genes and genotypes in relation to cervical intraepithelial neoplasia. *Tissue Antigens* **2005**, *65*, 252–259. [[CrossRef](#)] [[PubMed](#)]
88. Velickovic, M.; Velickovic, Z.; Dunckley, H. Diversity of killer cell immunoglobulin-like receptor genes in Pacific Islands populations. *Immunogenetics* **2006**, *58*, 523–532. [[CrossRef](#)]
89. Conley, A.B.; Rishishwar, L.; Norris, E.T.; Valderrama-Aguirre, A.; Mariño-Ramírez, L.; Medina-Rivas, M.A.; Jordan, I.K. A Comparative Analysis of Genetic Ancestry and Admixture in the Colombian Populations of Chocó and Medellín. *G3 (Bethesda)* **2017**, *7*, 3435–3447. [[CrossRef](#)]
90. Williams, F.; duToit, E.D.; Middleton, D. KIR allele frequencies in a Xhosa population from South Africa. *Hum. Immunol.* **2004**, *65*, 1084–1085. [[CrossRef](#)]
91. Williams, F.; Hawkins, B.; Middleton, D. HLA-A and -B and KIR Gene Allele Frequencies in a Chinese Population from Hong Kong. *Hum. Immunol.* **2004**, *65*, 948–952. [[CrossRef](#)]
92. Augusto, D.G.; Zehnder-Alves, L.; Pincerati, M.R.; Martin, M.P.; Carrington, M.; Petzl-Erler, M.L. Diversity of the KIR gene cluster in an urban Brazilian population. *Immunogenetics* **2012**, *64*, 143–152. [[CrossRef](#)]
93. Moradi, S.; Stankovic, S.; O'Connor, G.M.; Pymm, P.; MacLachlan, B.J.; Faoro, C.; Retière, C.; Sullivan, L.C.; Saunders, P.M.; Widjaja, J.; et al. Structural plasticity of KIR2DL2 and KIR2DL3 enables altered docking geometries atop HLA-C. *Nat. Commun.* **2021**, *12*, 2173. [[CrossRef](#)]
94. Zhi-ming, L.; Yu-lian, J.; Zhao-lei, F.; Chun-xiao, W.; Zhen-fang, D.; Bing-chang, Z.; Yue-ran, Z. Polymorphisms of killer cell immunoglobulin-like receptor gene: Possible association with susceptibility to or clearance of hepatitis B virus infection in Chinese Han population. *Croat. Med. J.* **2007**, *48*, 800–806. [[CrossRef](#)] [[PubMed](#)]
95. Rivero-Juarez, A.; Gonzalez, R.; Camacho, A.; Manzanares-Martin, B.; Caruz, A.; Martinez-Peinado, A.; Torre-Cisneros, J.; Pineda, J.A.; Peña, J.; Rivero, A. Natural killer KIR3DS1 is closely associated with HCV viral clearance and sustained virological response in HIV/HCV patients. *PLoS ONE* **2013**, *8*, e61992. [[CrossRef](#)] [[PubMed](#)]
96. Körner, C.; Altfeld, M. Role of KIR3DS1 in human diseases. *Front. Immunol.* **2012**, *3*, 326. [[CrossRef](#)]
97. Gabriel, I.H.; Sergeant, R.; Szydlo, R.; Apperley, J.F.; DeLavallade, H.; Alsuliman, A.; Khoder, A.; Marin, D.; Kanfer, E.; Cooper, N.; et al. Interaction between KIR3DS1 and HLA-Bw4 predicts for progression-free survival after autologous stem cell transplantation in patients with multiple myeloma. *Blood* **2010**, *116*, 2033–2039. [[CrossRef](#)] [[PubMed](#)]
98. Venstrom, J.M.; Gooley, T.A.; Spellman, S.; Pring, J.; Malkki, M.; Dupont, B.; Petersdorf, E.; Hsu, K.C. Donor activating KIR3DS1 is associated with decreased acute GVHD in unrelated allogeneic hematopoietic stem cell transplantation. *Blood* **2010**, *115*, 3162–3165. [[CrossRef](#)]
99. Lienert, K.; Parham, P. Evolution of MHC class I genes in higher primates. *Immunol. Cell Biol.* **1996**, *74*, 349–356. [[CrossRef](#)]
100. Díaz-Peña, R.; Vidal-Castiñeira, J.R.; Moro-García, M.A.; Alonso-Arias, R.; Castro-Santos, P. Significant association of the KIR2DL3/HLA-C1 genotype with susceptibility to Crohn's disease. *Hum. Immunol.* **2016**, *77*, 104–109. [[CrossRef](#)]