



Population genetic structure of two herds of Aberdeen Angus cattle breed in Colombia

Estructura genética poblacional de dos hatos de ganado bovino Aberdeen Angus en Colombia

Estrutura genética da população de dois rebanhos da raça Aberdeen Angus na Colômbia

Alejandra M Moreno-Sierra^{1*} ; Mario F Cerón-Muñoz² ; Iván D Soto-Calderón^{1*} .

¹Laboratorio de Genética Animal, Grupo de Investigación en Agrociencias, Biodiversidad y Territorio (GAMMA), Instituto de Biología, Facultad de Ciencias Exactas y Naturales, Universidad de Antioquia.

²Grupo de Investigación en Agrociencias, Biodiversidad y Territorio (GAMMA), Facultad de Ciencias Agrarias, Universidad de Antioquia.

To cite this article:

Moreno-Sierra AM, Cerón-Muñoz MF, Soto-Calderon I. Population genetic structure of two herds of Aberdeen Angus cattle breed in Colombia. Rev Colomb Cienc Pecu 2021; 34(4): 278–290. DOI: <https://doi.org/10.17533/udea.rccp.v34n4a05>

Abstract

Background: Two biotypes of Aberdeen Angus cattle breed, known as *Old Type* and *New Type*, that differ in their origin and beef production are formally recognized. In Colombia, this breed has been commercialized for approximately 80 years. Studies on the origin, kinship and levels of genetic diversity of this breed in Colombian herds are scarce, yet important for planning crossing and management strategies. **Objective:** To measure the genetic diversity and structure of two Colombian herds of *Old Type* and *New Type* biotypes of Aberdeen Angus from Huila and Cundinamarca provinces and assess mitochondrial introgression with other breeds. **Methods:** A set of ten microsatellites and sequences of the Mitochondrial Control Region were characterized. Estimators of genetic diversity and population differentiation along with tests of population assignment were applied. **Results:** Nuclear loci were highly polymorphic as shown by the Polymorphic Information Content (0.599) and the Probability of Identity ($1.896 \cdot 10^{-08}$). Both populations were highly diverse and clearly differentiated into two groups corresponding to the *Old Type* and *New Type* phenotypes. In contrast, mitochondrial data failed to distinguish these two groups and showed extensive admixture. **Conclusions:** This study optimized a set of ten highly polymorphic nuclear markers that may be used for parentage and population genetic studies of Aberdeen Angus. Genetic differentiation in these loci agreed with phenotypic differences of the *Old* and *New Types*. However, mitochondrial data indicated ancestry of multiple European breeds in the origin of Colombian Aberdeen Angus.

Keywords: *Aberdeen Angus; bovine; biotype; beef cattle; cattle; cattle breed; genetic diversity; genetic structure; kinship; microsatellites; mitochondrial DNA; mitochondrial introgression; phenotype; polymorphic markers; population genetics.*

Received: December 9, 2019; accepted: October 16, 2020

*Corresponding author. Calle 70 No. 52-21, Medellín, Colombia. Tel.: +573137091801. E-mail: ivan.soto@udea.edu.co



This work is licensed under a Creative Commons Attribution-NonCommercial-ShareAlike 4.0 International License.

Resumen

Antecedentes: Dentro de la raza Aberdeen Angus existen dos biotipos conocidos como *Old Type* y *New Type*, las cuales difieren en su origen y producción de carne. En Colombia, esta raza se ha venido comercializando desde hace aproximadamente 80 años. No obstante, aún no se han realizado estudios sobre su origen, parentesco y niveles de diversidad genética de esta raza en hatos colombianos, lo cual es importante para planear estrategias de cruce y manejo. **Objetivo:** Medir la diversidad y estructura genética de dos hatos colombianos de Aberdeen Angus *Old Type* y *New Type* de Huila y Cundinamarca y evaluar la introgresión mitocondrial con otras razas. **Métodos:** Se caracterizó un grupo de diez loci microsatélite y se secuenció la Región Control Mitocondrial. Se aplicaron estimadores de diversidad genética y diferenciación poblacional, junto con pruebas de asignación poblacional. **Resultados:** Los loci microsatélite fueron altamente polimórficos, tal como lo indicaron el Contenido de Información Polimórfica (0,599) y la Probabilidad de Identidad ($1,896 \cdot 10^{-08}$). Las poblaciones evaluadas de Aberdeen Angus en Colombia fueron altamente diversas y se diferenciaron claramente en dos grupos correspondientes a los fenotipos *Old Type* y *New Type*. En contraste, los datos mitocondriales no recobraron estos dos grupos y mostraron una amplia mezcla genética. **Conclusiones:** Este estudio optimizó un grupo de diez marcadores altamente polimórficos que pueden ser usados para estudios de parentesco y genética poblacional de Aberdeen Angus. La diferenciación genética en loci nucleares concordó con las diferencias fenotípicas entre *Old* y *New Types*, pero los datos mitocondriales indicaron ancestría de múltiples razas europeas en el origen del Aberdeen Angus colombiano.

Palabras clave: *Aberdeen Angus; ADN mitocondrial; bovino; biotipo; diversidad genética; estructura genética; fenotipo; ganado; ganado de carne; genética de poblaciones; introgresión mitocondrial; marcadores polimórficos; microsatélites; parentesco; raza de ganado.*

Resumo

Antecedentes: Dentro da raça Aberdeen Angus há dois biótipos conhecidos como *Old Type* e *New Type*, que diferem em sua origem e produção de carne. Na Colômbia, esta raça é comercializada há aproximadamente 80 anos. Entretanto, estudos sobre a origem, o parentesco e os níveis de diversidade genética desta raça em rebanhos colombianos ainda não foram realizados, o que é importante para o planejamento de cruzamentos e estratégias de manejo. **Objetivo:** Medir a diversidade genética e a estrutura de dois rebanhos colombianos de biótipos de *Old Type* e *New Type* de Aberdeen Angus de Huila e Cundinamarca e avaliar a introgresão mitocondrial com outras raças. **Métodos:** Um grupo de dez loci de microsatélites foi caracterizado e a Região de Controle Mitocondrial foi sequenciada. As estimativas de diversidade genética e diferenciação populacional foram aplicadas, juntamente com testes de designação populacional. **Resultados:** Os locus microsatélites foram altamente polimórficos, conforme indicado pelo Conteúdo de Informação Polimórfica (0,599) e Probabilidade de Identidade ($1,896 \cdot 10^{-08}$). As populações avaliadas de Aberden Angus na Colômbia eram altamente diversificadas e claramente diferenciadas em dois grupos correspondentes aos fenótipos do *Old Type* e *New Type*. Em contraste, os dados mitocondriais não recuperaram esses dois grupos e mostraram um amplo mix genético. **Conclusões:** Este estudo otimizou um grupo de dez marcadores altamente polimórficos que podem ser usados para estudos genéticos de parentesco e população de Aberdeen Angus. A diferenciação genética nos loci nucleares concordou com as diferenças fenotípicas entre os *Old* e *New Types*, mas os dados mitocondriais indicam ancestralidade de várias raças européias na origem do Aberdeen Angus colombiano.

Palavras-chave: *Aberdeen Angus; ADN mitocondrial; biótipo; diversidade genética; estrutura genética; gado; gado de corte; bovino; fenótipo; genética populacional; introgresão mitocondrial; marcadores polimórficos; microsatélites; parentesco; raça de gado.*

Introduction

Reduction in genetic variation is expected in commercial cattle as a consequence of artificial selection and domestication, which may raise levels of inbreeding and lead to fixation of deleterious alleles (Taberlet *et al.*, 2008). Furthermore, artificial insemination has increased the risk of extinction of certain cattle breeds by increasing the selective pressure and the rate of genetic change, with a concomitant reduction in effective population sizes (Taberlet *et al.*, 2008). This highlights the importance of recognizing population genetic units and formulating strategies to preserve the genetic diversity of domestic breeds as means for their conservation, facilitate their potential to respond to biotic and abiotic challenges and ultimately guarantee their long-term productivity.

Aberdeen Angus is a cattle breed of the utmost importance in the beef market. This breed is original from Scotland and it is known for its small size, short head-tail distance, fat deposit and hardiness (Villegas Castagnasso *et al.*, 2015). Unlike the traditional Scottish phenotype called *Old Type*, a more recent variety called *New Type* was shaped in the 1960's and 1970's in Canada and USA, which are of a large size, more muscular, and exhibits more cylindrical body and leaner carcasses than the *Old Type* (Asociación Argentina de Angus, 2014).

The earliest records of Aberdeen Angus in Colombia date back to the late 19th century, when around 100 individuals of *Old Type* were introduced from Scotland into Huila and Caquetá provinces. These historical population correspond to the founders of herds in Tierraleja and Tamalá (Cundinamarca and Huila, respectively). More recently, new collections of Aberdeen Angus *New Type* were also introduced from North America (Piñeros, 1980).

Anecdotal records from livestock breeders and retailers indicate that Aberdeen Angus have been historically crossed with Colombian breeds and other European breeds such as Normande to improve its performance and productivity

(Bedoya *et al.*, 2001). Outbreeding in Aberdeen Angus is no longer a common practice and it is thought to have ceased completely in more recent years (Piñeros, 1980). Current efforts in regions with a tradition of Aberdeen Angus breeding such as the Colombian provinces of Antioquia, Cundinamarca and Huila are aimed at rescuing this breed through crosses with *New Type* specimens, to the point that Aberdeen Angus herds in Colombia are perceived as relatively pure (Piñeros, 1980). A previous analysis of Aberdeen Angus in Antioquia with ten microsatellite loci evidenced high genetic diversity as compared to other local breeds (Montoya *et al.*, 2010). However, implementation of population genetic studies in other Colombian regions with a breeding tradition of Aberdeen Angus is an important step to assess the extent of admixture and relatedness with other breeds, and design management plans for this breed. Given the limited knowledge regarding the origin and introgression of Aberdeen Angus in Colombia, this study aimed to measure the levels of both nuclear and mitochondrial genetic diversity, the differentiation of *Old Type* and *New Type* herds of Aberdeen Angus in Huila and Cundinamarca and assess mitochondrial introgression with other breeds.

Materials and Methods

Population sample

A total of 29 plucked hair samples were provided by the animal owners of “Tamalá” (Algeciras, Huila) and “Tierraleja” (La Calera, Cundinamarca) herds. Ten-generation genealogical records were used to select the least related individuals within each herd and these individuals were split into two groups according to their *Old Type* and *New Type* ancestry (Osorio and Toro 2018). The groups consisted of 14 individuals with the highest levels of *Old Type* (>50%) named *Old Type Colombia* (OTC), and 15 100% *New Type* named *New Type Colombia* (NTC).

Table 1. List of 29 individuals of *Old Type Colombia* (OTC) and *New Type Colombia* (NTC) included in this study and their corresponding ancestries (Osorio and Toro 2018).

<i>Old Type Colombia</i>			<i>New Type Colombia</i>		
ID	% New Type	% Old Type	ID	% New Type	% Old Type
296	25.0	75.0	246	100	0
232	25.0	75.0	244	100	0
284	25.0	75.0	210	100	0
334	12.5	87.5	214	100	0
327	25.0	75.0	222	100	0
350	25.0	75.0	242	100	0
396	25.0	75.0	252	100	0
417	25.0	75.0	230C	100	0
401	25.0	75.0	236	100	0
380	12.5	87.5	234	100	0
419	25.0	75.0	130	100	0
382	25.0	75.0	180	100	0
348	25.0	75.0	166	100	0
372	37.5	62.5	172	100	0
			204	100	0

Amplification of microsatellite loci

Genomic DNA was extracted from hair using the *UltraClean® Tissue & Cells DNA Isolation Kit* following the protocol from the supplier (MoBio Laboratories, Hilden, Germany). A set of ten microsatellite loci recommended by the Food and Agriculture Organization of the United Nations (FAO) for studies of genetic diversity in cattle were selected (Table 2) (Commission on Genetic Resources for Food and Agriculture 2011; Ilie *et al.*, 2015). Several primer modifications and amplification protocols of these loci in four multiplexes were implemented by Londoño Díaz *et al.* (2016) and followed in this study. Each PCR reaction contained buffer 1X, dNTP's 0.2 µM, MgCl₂ 2.0 – 2.5 mM, 0.2 µM of each primer, Taq polymerase 0.5 U (Qiagen, Venlo, Netherlands) and 1 µL DNA in a final volume of 15 µl. The amplification protocol consisted on an initial denaturation step at 94 °C for 5 min, followed by 35 cycles of 94 °C for 30 s, 59 - 65 °C for 45 s and 72 °C for 1 min, and a final extension step of 72 °C for 10 min. PCR products were processed in an ABI Prism 3110

genetic analyzer (Applied Biosystems, Foster City, CA, USA) (Table 2). Raw data were read in Geneious v.6.1.6 (Biomatters Ltd., Auckland, New Zealand) and allele binning was done in FlexiBin (Amos *et al.*, 2007).

Amplification and Sequencing of the Mitochondrial Control Region

Four NTC and one OTC individuals were selected based on genealogical records as representatives of all the unique mitochondrial lineages in both herds. A fragment of 379 bp in the Mitochondrial Control Region (MCR) was amplified and sequenced with the primer pair Ilie.F (5' CAGAATTTGCACCCTAACCAA 3') and Ilie.R (5' GGGGCCTGCGTTTATATATTG 3') (Ilie *et al.*, 2015). The PCR cocktail contained Buffer 1X, dNTP's 0.2 µM, MgCl₂ 2 mM, 0.2 µM of each primer, Taq polymerase 0.7 U (Qiagen, Hilden, Germany), and 1 µL DNA in a final volume of 40 µL. The thermal profile was as follows: 94 °C for 2 min, followed by 35 cycles at 94 °C for 30 s, 60 °C for 45 s and 72 °C for 50 s, and a final step of 72 °C for 10 min.

Table 2. Microsatellite markers used in this study indicating allele size, fluorochrome labeling and amplification conditions.

Multiplex	Locus	Size Range	Fluorochrome	MgCl ₂	Temperature (°C)
1	BM2113	122-138	FAM TM	2.0	60.0
	SPS115	246-258	PET [®]	2.0	60.0
	TGLA126	309-315	VIC [®]	2.0	60.0
	ETH225	188-198	FAM TM	2.0	60.0
2	ETH10	214-218	NED TM	2.0	65.0
	TGLA122	140-156	VIC [®]	2.0	65.0
3	INRA32	166-180	NED TM	2.5	60.0
	INRA64	220-228	PET [®]	2.5	60.0
4	BM1824	180-190	PET [®]	2.5	59.5
	INRA37	264-288	FAM TM	2.5	59.5

A volume of 20 µL of the PCR product was purified with a mix of Exonuclease I 0.5 U, Alkaline Phosphatase 0.25 U (New England Biolabs, Ipswich, MA, USA), and milliQ water in a final volume of 30 µL, and incubated at 37 °C for 30 min. Sequencing of the clean amplicons was then outsourced with a commercial supplier. Raw sequence profiles were read and edited in Geneious v.6.1.6 (Biomatters Ltd., Auckland, New Zealand), and aligned in Mega v.7 using the ClustalW algorithm (Kumar *et al.*, 2008).

Diversity and genetic structure

The number of alleles (Na), effective number of alleles (Ne), observed (Ho) and expected (He) heterozygosities, probability of identity (PI), and probabilities of exclusion (PE) for microsatellite loci were estimated in GenAlex v.6.5 (Peakall and Smouse, 2006). Corrected allele richness was estimated using rarefaction with default parameters in iNEXT (Hsieh *et al.*, 2016). PI is defined as the probability that two randomly picked specimens in a given population share identical multilocus genotypes. PE is defined as the probability of excluding an alleged father or parent pair from parentage of a given offspring in three possible scenarios: testing one parent when the other parental genotype is unavailable (PE-1 or first parent), testing one parent when the genotype of the other parent is available (PE-2 or second parent), and when a parent

pair is tested (PE-3 or parent pair) (Jamieson and Taylor, 1997; Marshall *et al.*, 1998). The Polymorphic Information Content (PIC) was estimated with CERVUS v.3.0.7. (Marshall *et al.*, 1998).

Testing of Hardy-Weinberg equilibrium and estimation of the Wright's fixation index (Fis) were done in Genepop v.4.6 (Rousset, 2008). Linkage disequilibrium was tested with a significance level of 0.05 and 10,000 permutations in Arlequin v.3.5.2.2 applying Holm (1979) corrections for multiple comparisons (Excoffier and Lischer, 2010). Genetic differentiation between OTC and NTC was assessed using a Principal Coordinate Analysis (PCoA) and a frequency-based Assignment test (FAT) in GenAlex v.6.5., as well as a Bayesian test of genetic differentiation in STRUCTURE v.2.3.4 (Pritchard *et al.*, 2000; Peakall and Smouse, 2006; Garrido-Garduño and Vázquez-Domínguez, 2013). The PCoA is a multivariate method and STRUCTURE is a Bayesian approach, both designed to detect patterns of genetic differentiation within a dataset of multilocus genotypes without previous individual assignment to a candidate population. FAT is a population assignment test that estimates a log-transformed value of the probability of an individual to series of previously delimited populations based on the expected allele frequencies at each locus. The Bayesian test was implemented assuming a variable number of gene

pools (K) in the sample, from K = 1 to K = 4, where the most likely number was inferred estimating ΔK in the Excel spreadsheet EX_STRUCTURE (González, 2018).

DnaSP v.5.10.1. (Librado and Rozas, 2009) was used to estimate nucleotide diversity, number and diversity of haplotypes and number of segregating sites in the MCR sequences. A haplotype network was constructed in PopArt (Leigh and Bryant, 2015) combining our sequences with others retrieved from GenBank for *Old Type* from Argentina and Britain, *New Type* from the USA and Argentina, and the diagnostic haplotypes for African (T1), Near-Eastern (T2), European (T3) and Zebuine (I1 and I2) breeds (see Accession codes in Supplementary Table 1) (Anderson *et al.*, 1982; Troy *et al.*, 2001; Achilli *et al.*, 2008).

Results

Genetic diversity in microsatellite loci

The set of 10 microsatellite loci was successfully amplified in 29 individuals belonging to NTC and OTC. The total number of alleles was 44 in all loci, where SPS115 and BM2113 exhibited the largest number of alleles (five in OTC and six in NTC, respectively), whereas TGLA122 and SPS115 showed the largest effective number of alleles (3.806 and 3.982, respectively) (Table 3). The alleles 122, 128 and 138 in the locus BM2113, 184 in BM1824 and 220 in INRA64 were exclusive of NTC. PI values for single loci were between 0.092 and 0.326 with a combined value of $1.896 \cdot 10^{-8}$ (Table 4). PE-1 was between 0.248 and 0.548, PE-2 between 0.112 and 0.366, and PE-3 between 0.392 and 0.739. Combined PE-1, PE-2 and PE-3 values were 0.995, 0.942 and >0.999 , respectively.

Table 3. Indices of genetic diversity for ten microsatellite loci in two populations of Aberdeen Angus in Colombia (*Old Type Colombia* and *New Type Colombia*).

Population	Locus	N	Na	Ne	Ho	He	F _{is}
<i>Old Type Colombia</i>	BM1824	14	3	2.085	0.571	0.520	-0.098
	BM2113	14	4	3.136	0.857	0.681	-0.258
	ETH10	14	3	2.292	0.857	0.564	-0.520
	ETH225	14	3	2.513	0.714	0.602	-0.186
	INRA32	14	3	1.537	0.357	0.349	-0.022
	INRA37	14	4	2.562	0.857	0.610	-0.406
	INRA64	14	4	3.039	0.714	0.671	-0.065
	SPS115	14	5	3.596	0.929	0.722	-0.286
	TGLA122	14	4	3.806	0.929	0.737	-0.260
	TGLA126	14	4	2.741	0.714	0.635	-0.124
<i>New Type Colombia</i>	BM1824	15	4	2.018	0.667	0.504	-0.322
	BM2113	15	6	3.462	0.867	0.711	-0.219
	ETH10	15	3	1.852	0.467	0.460	-0.014
	ETH225	15	5	3.659	0.933	0.727	-0.284
	INRA32	15	3	2.103	0.600	0.524	-0.144
	INRA37	15	4	2.473	0.667	0.596	-0.119
	INRA64	15	5	3.719	0.600	0.731	0.179
	SPS115	15	5	3.982	0.867	0.749	-0.157
	TGLA122	15	3	1.923	0.667	0.480	-0.389
	TGLA126	15	4	2.459	0.733	0.593	-0.236

N = Sample size; Na = Number of alleles per locus; Ne = Effective number of alleles; Ho = Heterozygosity observed; He = expected Heterozygosity; F_{is} = Wright's Fixation Index.

PIC was between 0.425 and 0.723 with a mean value of 0.599. Significant deviations from Hardy-Weinberg equilibrium or significant inbreeding (F_{is}) were not found in any locus ($\alpha \geq 0.05$, Table 3). Also, no linkage disequilibrium between any pair of loci was found after Holm's correction.

Genetic structure in nuclear loci

Genetic differentiation of NTC and OTC was evidenced in the PCoA (Figure 1), where

principal components 1 and 2 provided 42.4 and 32.3% of the total genetic variation, respectively. However, an individual initially classified as OTC (AA284), was more related to NTC. The Population Assignment test in GenAlex successfully assigned every individual originally classified as OTC or NTC to its original cluster and evidenced a clear genetic differentiation of these two types (Figure 2).

Table 4. Values for Probability of Identity (PI), probabilities of Exclusion (PE-1, PE-2 and PE-3) and Polymorphic information content (PIC) for 10 loci microsatellite loci in Aberdeen Angus from Colombia.

Locus	Allelic size	PI	PE-1	PE-2	PE-3	PIC
BM1824	180-190	0.282	0.285	0.137	0.443	0.469
BM2113	122-138	0.092	0.548	0.366	0.739	0.723
ETH10	214-218	0.190	0.365	0.217	0.513	0.585
ETH225	188-198	0.158	0.423	0.257	0.599	0.624
INRA32	176-180	0.326	0.248	0.112	0.392	0.425
INRA37	266-288	0.223	0.339	0.201	0.496	0.541
INRA64	220-228	0.127	0.474	0.300	0.653	0.671
SPS115	246-256	0.110	0.507	0.330	0.688	0.699
TGLA122	140-156	0.139	0.451	0.278	0.628	0.651
TGLA126	307-315	0.173	0.395	0.239	0.556	0.606
Combined		1.896 10 ⁻⁰⁸	0.995	0.942	>0.999	
Mean						0.599

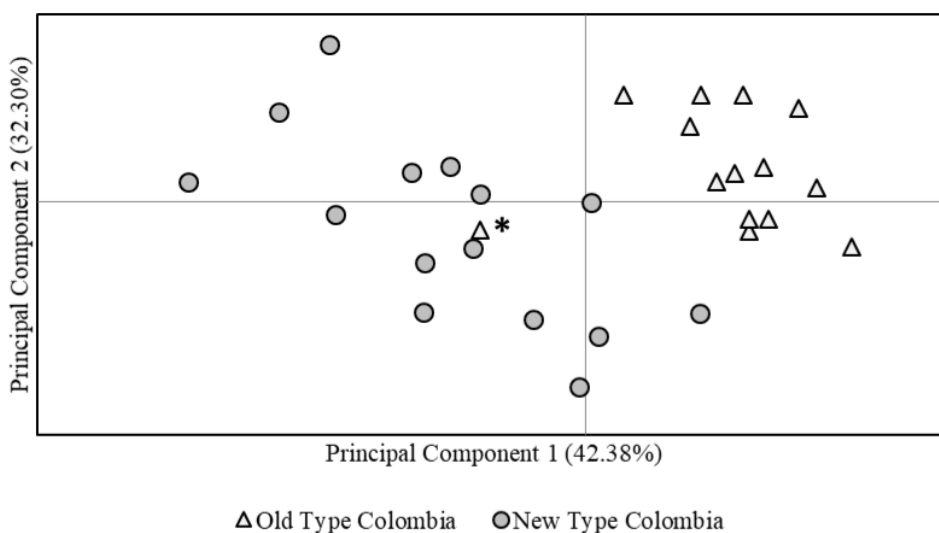


Figure 1. Principal Coordinates Analysis (PCoA) for *Old Type* and *New Type* Aberdeen Angus in Colombian herds. The asterisk points out an *Old Type* individual (AA284) with closer relationship to *New Type*.

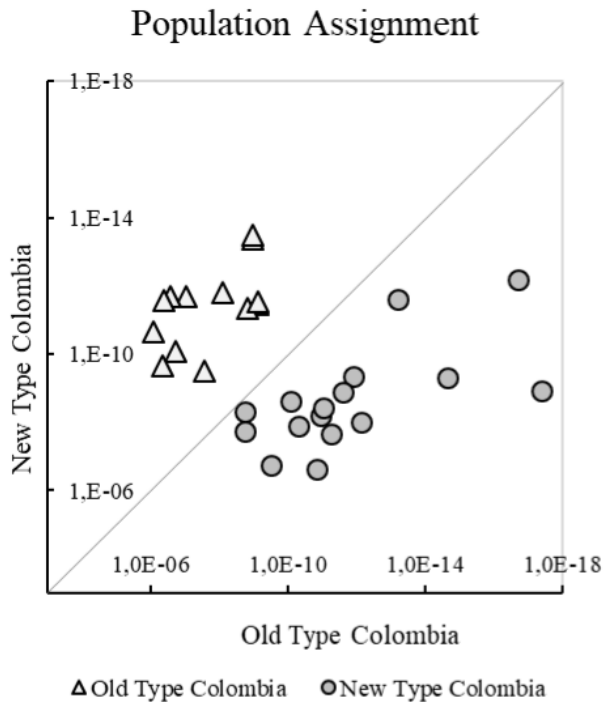


Figure 2. Individual probability of assignment of Aberdeen Angus in Colombian herds to their original *Old* and *New Types*.

The most likely number of gene pools in our sample, as inferred with the Bayesian population analysis in STRUCTURE, was one ($K=1$; $\Delta K=8.09$), since substantial levels of genetic admixture were found in several individuals such as 2 (AA284), 19, 21 and 25 in Figure 3. However, the analysis with $K = 2$ ($\Delta K=2.04$) allowed the recognition of two clusters that in most cases match the original classification as OTC or NTC (Figure 3).

Rarefaction curves revealed a corrected allelic richness close to an asymptotic value for all loci in both OTC and NTC, indicating only a limited effect of sampling effort on the detected levels of allelic richness (Figure 4).

Diversity and genetic structure of the Mitochondrial Control Region

The MCR sequences recovered from the five selected individuals were all different from each other (haplotype diversity of 1.0), showed 16 variable sites and nucleotide diversity of 0.00841. The haplotype network with the sequences derived from this study and those retrieved from the Genbank showed a “star” pattern around Hap_05, which is one of the European diagnostic haplotypes (T3), present in USA *New Type*, Argentinean *New Type*, British *Old Type* and Argentinean *Old Type*, but not in Colombian Aberdeen Angus sampled in this study (Figure 5). NTC was more diverse than OTC since they exhibited four and one haplotype, respectively. NTC haplotypes were Hap10, Hap25, Hap26 and Hap27; and the only haplotype present in OTC was Hap28. In particular, Hap27 is four mutational steps from both the African T1 Hap29 and Hap15 present in Argentinean *New Type*. Similarly, Hap26 is four mutational steps from both the European T3 Hap1 present in Argentinean *New Type*, and Hap18 present in British *Old Type*. Haplotypes Hap10 and Hap25, as well as Hap28, were between one and three mutational steps from the European Hap5 in the haplotype network.

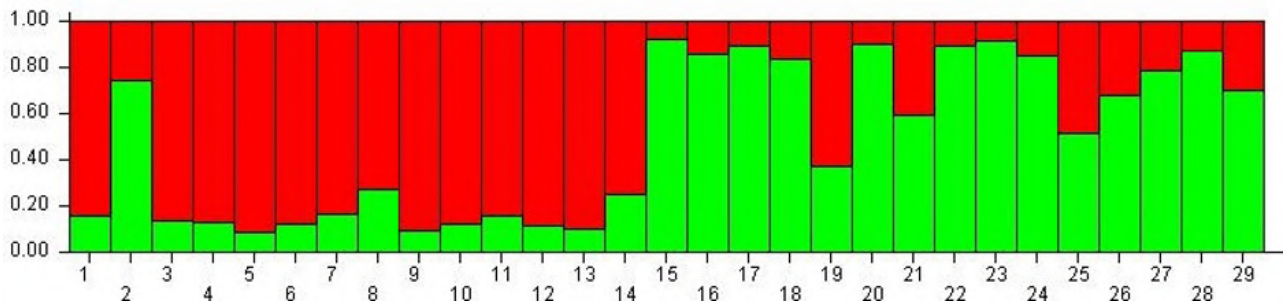


Figure 3. Assignment Test based on the Bayesian model ($n=29$): *Old Type Colombia* (1-14) and *New Type Colombia* (15-29). Individual AA284 corresponds to number 2 in this figure.

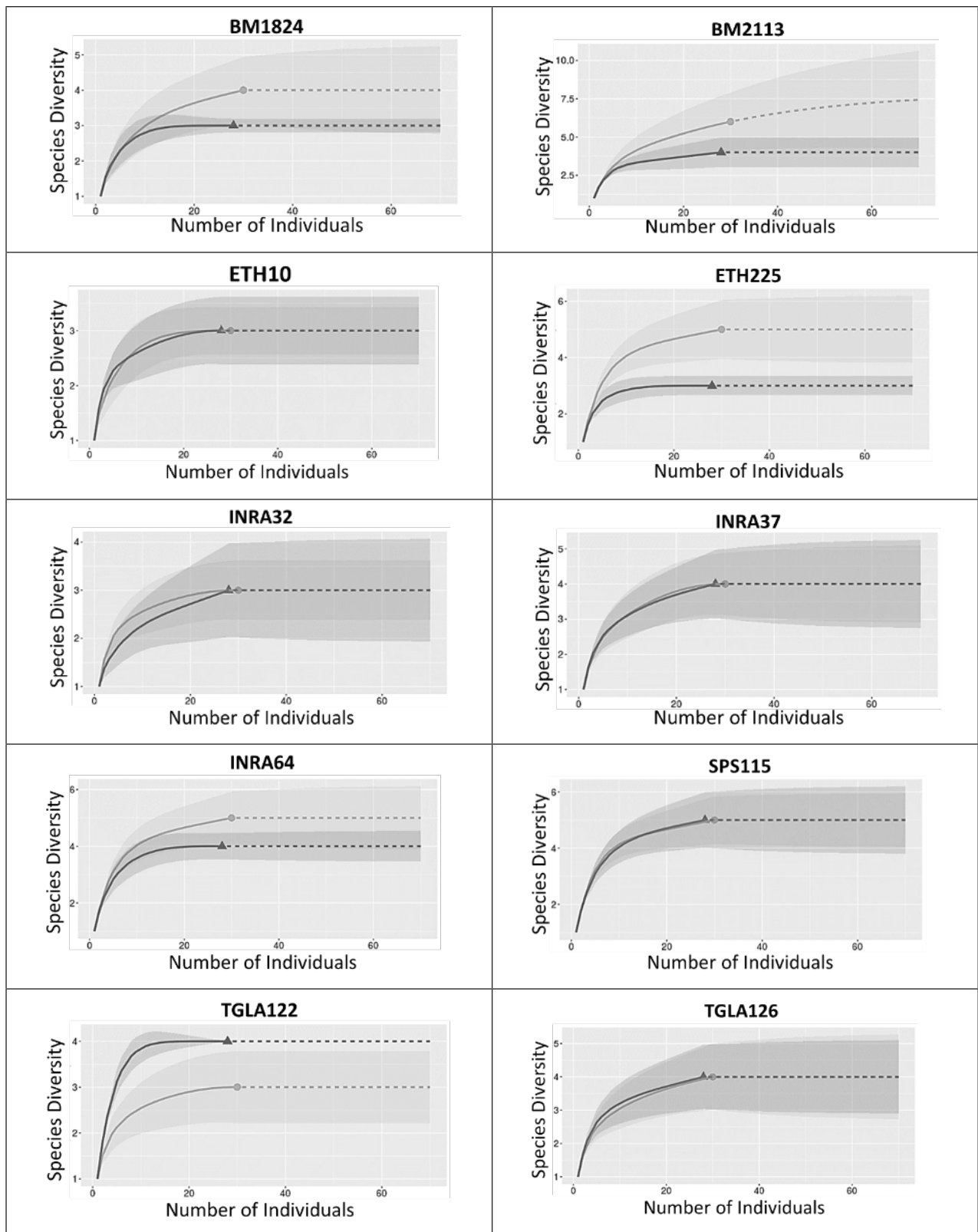


Figure 4. Curve of rarefaction for corrected allele richness of *Old Type Colombia* (OTC, Δ) and *New Type Colombia* (NTC, \circ). Interpolated data (—) and extrapolated data (---).

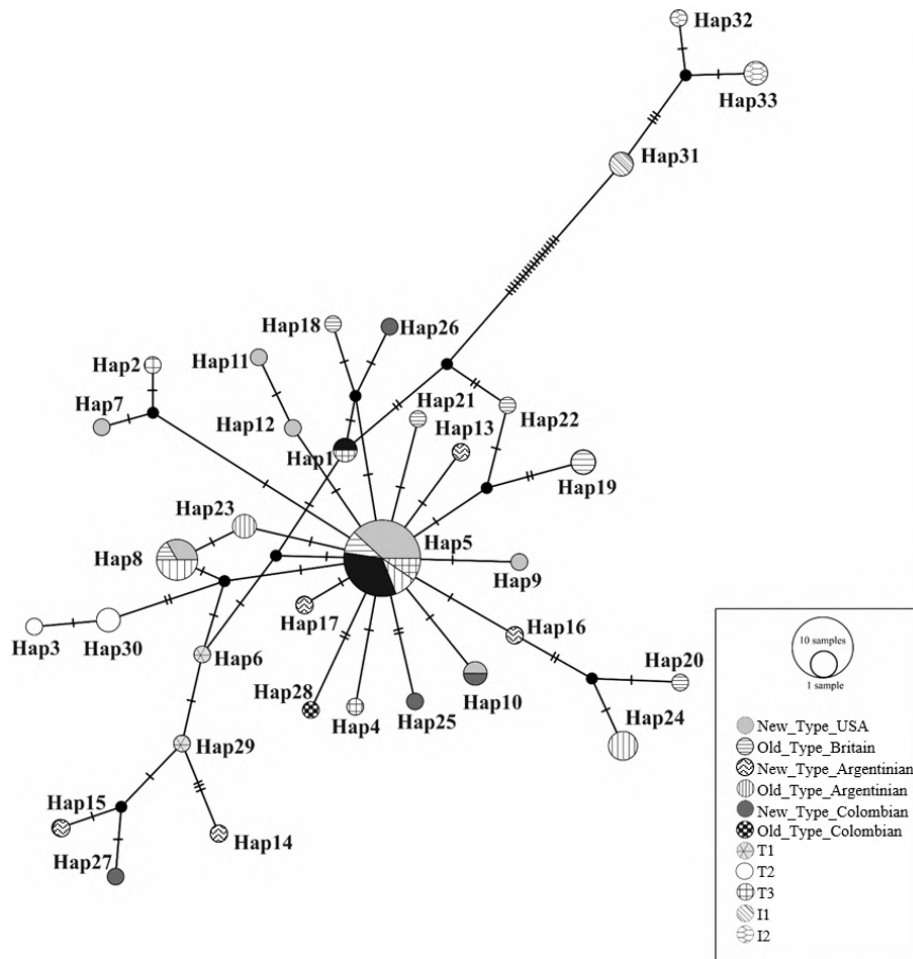


Figure 5. Haplotype network of mitochondrial sequences of Aberdeen Angus *New Type* USA, *New Type* Argentina, *Old Type* Britain, *Old Type* Argentina, *New Type* Colombia y *Old Type* Colombia. Diagnostic haplotypes for African, Near-Eastern, European and zebuine breeds are T1, T2, T3, I1 and I2, respectively.

Discussion

This study of the genetic structure and diversity of Aberdeen Angus in herds of the Colombian provinces of Cundinamarca and Huila made use of ten nucleotide markers that revealed high polymorphism and elevated levels of genetic diversity in both *New Type* and *Old Type* biotypes. These markers were very informative and good candidates for demographic studies as well as relatedness and paternity tests in Aberdeen Angus, given the high average Polymorphic Information Content (>0.5), a value of the combined Probability of Identity close to zero and Powers of Exclusion on three different scenarios that were also close

to an ideal value of 0.999 (Botstein *et al.*, 1980; Stevanovic *et al.*, 2009; Radko, 2010; Montoya *et al.*, 2010; Sepúlveda *et al.*, 2012; Campos *et al.*, 2018). However, the average number of alleles per locus was below the number previously reported for Aberdeen Angus in Antioquia, where it varied between 7 and 11 alleles for the same markers (Montoya *et al.*, 2010). Rarefaction analysis indicated that this deficit cannot be explained by limited sampling effort and therefore may be a consequence of regional differences in population history and management.

Both analyses of population structure were consistent in the recovery of two distinct groups

corresponding to the *New Type* and *Old Type* biotypes. The only exception to this pattern was observed in one individual, whose biotype corresponds to *Old Type*, but was assigned to *New Type* by the genetic analyses. This might be due to errors in genealogical records and incorrect morphological assignment to *Old Type*.

Levels of mitochondrial haplotype diversity of Aberdeen Angus in Colombia were high and similar to those previously reported for this breed in the USA, Argentina and Britain (Ginja *et al.*, 2010). Unlike nuclear markers, genetic structure between *Old Type* and *New Type* was absent at the mitochondrial level. Several haplotypes such as Hap5 and Hap8 are present in both European and American *Old Type* and *New Type*, but a few haplotypes with restricted distribution might still be proposed as candidates to diagnose *Old Type* and *New Type* (e.g. Hap7, Hap9, Hap11 and Hap12).

All the Aberdeen Angus haplotypes found in this and other studies are clearly related to European or African *Bos taurus* lineages. Likewise, most NTC haplotypes correspond to European lineages, but the close relation of the NTC haplotype Hap27 to African T3 haplotypes revealed introgression in the mitochondrial genome between African and European bovines (Troy *et al.* 2001; Bruford *et al.* 2003; Ginja *et al.* 2010; Villegas Castagnasso *et al.* 2015). This pattern of mitochondrial introgression can also be observed in Argentinian *New Type* haplotypes (Hap15 and Hap14), given their close relationship to T3 haplotypes in the mitochondrial network, revealing widespread mitochondrial introgression in Latin American herds of Aberdeen Angus.

In conclusion, this study provides a set of polymorphic markers useful to trace the origins, admixture, relatedness and overall for genetic management of Aberdeen Angus in Colombia. We also proved genetic introgression in Aberdeen Angus in Colombia, mainly through crosses with females of other breeds of European or African origin.

Declarations

Funding

This study was supported by Mr. Antonio José Piñeros and Ms. Tatiana Cifuentes, owner and manageress of the “Tamalá” (Algeciras, Huila) and “Tierraleja” (La Calera, Cundinamarca) herds, respectively.

Conflicts of interest

The authors declare they have no conflicts of interest with regard to the work presented in this report.

Author contributions

Alejandra María Moreno Sierra was responsible for conducting experiments, consolidating data, analyses and writing the manuscript. Mario Fernando Cerón Muñoz was responsible for conception of this study and access to biological samples. Iván Darío Soto Calderón was responsible for access to biological samples, experiment design, data analyses, project administration and edition of the manuscript.

References

Achilli A, Olivieri A, Pellecchia M, Ubaldi C, Colli L, Al-Zahery N, Accetturo M, Pala M, Kashani BH, Perego UA, *et al.* Mitochondrial genomes of extinct aurochs survive in domestic cattle. *Curr Biol* 2008; 18(4): R157–R158.

Amos W, Hoffman JI, Frodsham A, Zhang L, Best S, Hill AVS. Automated binning of microsatellite alleles: problems and solutions. *Mol Ecol Notes* 2007; 7(1): 10–14. DOI: <https://doi.org/10.1111/j.1471-8286.2006.01560.x>

Anderson S, de Bruijn MHL, Coulson AR, Eperon IC, Sanger F, Young IG. Complete sequence of bovine mitochondrial DNA conserved features of the mammalian mitochondrial genome. *J Mol Biol* 1982; 156(4): 683–717. DOI: [https://doi.org/10.1016/0022-2836\(82\)90137-1](https://doi.org/10.1016/0022-2836(82)90137-1)

- Asociación Argentina de Angus. 2014. Características Morfológicas de la Raza Angus. [accessed 2016 Jul 6]. <http://www.angus.org.ar/>.
- Bedoya G, Carvajal LG, Moreno FL, Davies S, Derr J, Ossa JE, Kingdom U. Estructura molecular y poblacional del ganado criollo colombiano (GCC). *Rev Colomb Ciencias Pecu* 2001; 14(24): 109–120. Available from: <https://aprendeenlinea.udea.edu.co/revistas/index.php/rccp/article/view/323757>
- Botstein D, White RL, Skolnick M, Davis RW. Construction of a Genetic Linkage Map in Man Using Restriction Fragment Length Polymorphisms. *Am J Hum Genet* 1980; 32: 314–331. PMID: 6247908; PMCID: PMC1686077.
- Bruford MW, Bradley DG, Luikart G. DNA markers reveal the complexity of livestock domestication. *Nat Rev Genet* 2003; 4: 900–910. DOI: <https://doi.org/10.1038/nrg1203>
- Campos J, Vargas B, Camacho J, Cruz A. Pruebas De Identidad Y Paternidad En Ganado Brahman. *Agron Costarric* 2018; 42(1): 49–62. DOI: <https://doi.org/10.15517/rac.v42i1.32197>
- Commission on Genetic Resources for Food and Agriculture. 2011. Molecular genetic characterization of animal genetic resources. Rome: Commission on Genetic resources for Food and Agriculture, Food and Agriculture Organization of the United Nations. [accessed 2018 Nov 26]. <http://www.fao.org/3/i2413e/i2413e00.htm>
- Excoffier L, Lischer HEL. Arlequin suite ver 3.5: a new series of programs to perform population genetics analyses under Linux and Windows. *Mol Ecol Resour* 2010; 10(3): 564–567. DOI: <https://doi.org/10.1111/j.1755-0998.2010.02847.x>
- Garrido-Garduño T, Vázquez-Domínguez E. Métodos de análisis genéticos, espaciales y de conectividad en genética del paisaje. *Rev Mex Biodivers* 2013; 84(3): 1031–1054. DOI: <https://doi.org/10.7550/rmb.32500>
- Ginja C, Penedo MCT, Melucci L, Quiroz J, Martínez López OR, Revidatti MA, Martínez-Martínez A, Delgado J V., Gama LT. Origins and genetic diversity of New World Creole cattle: Inferences from mitochondrial and y chromosome polymorphisms. *Anim Genet* 2010; 41: 128–141. DOI: <https://doi.org/10.1111/j.1365-2052.2009.01976.x>
- González F. 2018. Web del Curso de Caracterización de Recursos Genéticos 2018. Software. [accessed 2018 Jun 26]. <http://fernando.gonzalez.unileon.es>
- Holm S. A Simple Sequentially Rejective Multiple Test Procedure. *Scand J Stat* 1979; 6:65–70. Retrieved from <http://www.jstor.org/stable/4615733>
- Hsieh TC, Ma KH, Chao A. iNEXT: an R package for rarefaction and extrapolation of species diversity (Hill numbers). *Methods Ecol Evol* 2006; 7(12): 1451–1456. DOI: <https://doi.org/10.1111/2041-210X.12613>
- Ilie DE, Cean A, Cziszter LT, Gavojdian D, Ivan A, Kusza S. Microsatellite and Mitochondrial DNA Study of Native Eastern European Cattle Populations: The Case of the Romanian Grey. *PLoS One* 2015; 10(9): 1–18. DOI: <https://doi.org/10.1371/journal.pone.0138736>
- Jamieson A, Taylor SSC. Comparisons of three probability formulae for parentage exclusion. *Anim Genet* 1997; 28(6): 397–400. DOI: <https://doi.org/10.1111/j.1365-2052.1997.00186.x>
- Kumar S, Nei M, Dudley J, Tamura K. MEGA: a biologist-centric software for evolutionary analysis of DNA and protein sequences. *Brief Bioinform* 2008; 9(4): 299–306. DOI: <https://doi.org/10.1093/bib/bbn017>
- Leigh J, Bryant D. Popart: full feature software for haplotype network construction. *Methods Ecol Evol* 2015; 6(9): 1110–1116. DOI: <https://doi.org/10.1111/2041-210X.12410>

- Librado P, Rozas J. DnaSP v5: a software for comprehensive analysis of DNA polymorphism data. *Bioinformatics* 2009; 25(11): 1451–1452. DOI: <https://doi.org/10.1093/bioinformatics/btp187>
- Londoño Díaz N, Cerón Muñoz MF, Soto Calderón ID. Genetic diversity of Senepol cattle in Colombia using ten multiplexed microsatellites. *Livest Res Rural Dev* 2016; 28(8). Available from: <http://www.lrrd.org/lrrd28/8/lond28137.html>
- Marshall TC, Slate J, Kruuk LEB, Pemberton JM. Statistical confidence for likelihood-based paternity inference in natural populations. *Mol Ecol* 1998; 7(5): 639–655. DOI: <https://doi.org/10.1046/j.1365-294x.1998.00374.x>
- Montoya A, Cerón M, Moreno M, Martínez E, Corrales J, Tirado J, Calvo S. Genetic characterization of the Hartón del Valle, Angus, Brangus, Holstein, and Senepol cattle breeds in Colombia, using ten microsatellite markers. *Rev Colomb Ciencias Pecu* 2010; 23(September): 283–291. Available from: <https://aprendeenlinea.udea.edu.co/revistas/index.php/rccp/article/view/324589>
- Osorio M, Toro M. 2018. Estudio de caso: Comparación morfológica y filogenética de los biotipos de cruzamiento Aberdeen Angus de origen “escocés” y “*new type*” en cuatro rebaños colombianos. Universidad de Antioquia.
- Peakall R, Smouse PE. genalex 6: genetic analysis in Excel. Population genetic software for teaching and research. *Mol Ecol Notes* 2006; 6(1): 288–295. DOI: <https://doi.org/10.1111/j.1471-8286.2005.01155.x>
- Piñeros JA. 1980. La historia del Angus en Colombia. Obtained from Tierraleja Aberdeen Angus. Recovering on April 15, 2017. <https://tierraleja.jimdo.com>
- Pritchard JK, Stephen M, Donnelly P. Inference of Population Structure Using Multilocus Genotype Data. *Genetics* 2000; 115(2):945–959. PMID: 10835412; PMCID: PMC1461096
- Radko A. Application of a complementary set of 10 microsatellite DNA markers for parentage verification in Polish Red cattle. *Annals of Animal Science*. 2010; 10:9-15. Available from: www.researchgate.net/publication/287181893_Application_of_a_complementary_set_of_10_microsatellite_DNA_markers_for_parentage_verification_in_Polish_Red_cattle
- Rousset F. Genepop’007: a complete re-implementation of the genepop software for Windows and Linux. *Mol Ecol Resour* 2008; 8(1): 103–106. DOI: <https://doi.org/10.1111/j.1471-8286.2007.01931.x>
- Sepúlveda J, Ángel P, Toro A, Corrales J, Moreno MA, Cerón-muñoz MF. Genetic variability of Senepol cattle in Colombia using molecular markers. *Rev Colomb Ciencias Pecu* 2012; 25: 183–190. Available from: http://www.scielo.org.co/scielo.php?script=sci_arttext&pid=S0120-06902012000200003
- Stevanovic J, Stanimirovic Z, Dimitrijevic V, Stojic V, Fratric N, Lazarevic M. Microsatellite DNA polymorphism and its usefulness for pedigree verification in Simmental cattle from Serbia. *Acta Vet* 2009; 59: 621 – 631. DOI: <https://doi.org/10.2298/AVB0906621S>
- Taberlet P, Valentini A, Rezaei HR, Naderi S, Pompanon F, Negrini R, Ajmone-Marsan P. Are cattle, sheep, and goats endangered species?. *Mol Ecol* 2008; 17(1): 275–284. DOI: <https://doi.org/10.1111/j.1365-294X.2007.03475.x>
- Troy CS, MacHugh DE, Bailey JF, Magee DA, Loftus RT, Cunningham P, Chamberlain AT, Sykes BC, Bradley DG. Genetic evidence for Near-Eastern origins of European cattle. *Nature* 2001; 410: 1088–1091. DOI: <https://doi.org/10.1038/35074088>
- Villegas Castagnasso E, Rogberg Muñoz A, Prando AJ, Baldo A, Giovambattista G. D-loop Mitochondrial genetic analysis in Aberdeen Angus *old type* from Argentina. *J Basic Appl Genet* 2015; 26(2): 29–35. DOI: <http://hdl.handle.net/11336/11609>