

Score

Cuatro Obras para Ensamble de Percusión Latina con Acompañamiento de Pistas de Audio.

# 2. Colombia Tropical.

Cumbia, Paseo y Mercumbé.

Compositor: Juan Esteban Arias Carvajal.

Docente: Víctor Hugo Zapata Gómez.

Cumbia I

$\text{♩} = 95$

Timbales latinos

Congas

Güiro

Tbal. Lat.

Cgas.

Gro.

Tbal. Lat.

Cgas.

Gro.

2. Colombia Tropical.

13

Tbal. Lat.

Cgas.

Gro.

Paseo (Var. 1)

17

Tbal. Lat.

Cgas.

Gro.

21

Tbal. Lat.

Cgas.

Gro.

Paseo (Var. 2)

2. Colombia Tropical.

25

Tbal. Lat.

Cgas.

Gro.

29

Tbal. Lat.

Cgas.

Gro.

Paseo (Var. 3)

33

Tbal. Lat.

Cgas.

Gro.

37

Tbal. Lat.

Cgas.

Gro.

41

Tbal. Lat.

Cgas.

Gro.

45

Cumbia II

Tbal. Lat.

Cumbia II

Cgas.

Cumbia II

Gro.

2. Colombia Tropical.

49

Tbal. Lat.

Cgas.

Gro.

Paseo (Var. 4)

53

Tbal. Lat.

Cgas.

Gro.

Paseo (Var. 4)

53

Paseo (Var. 4)

57

Tbal. Lat.

Cgas.

Gro.

57

61

Tbal. Lat.

Cgas.

Gro.

65

Paseo (Base)

Tbal. Lat.

Cgas.

Gro.

69

Tbal. Lat.

Cgas.

Gro.

Cumbia III

73

Tbal. Lat.

Cgas.

Gro.

Tbal. Lat.

Cgas.

Gro.

77

77

Paseo (Var. 5)

81

Tbal. Lat.

Cgas.

Gro.

81

2. Colombia Tropical.

85

Tbal. Lat.

Cgas.

Gro.

85

Measures 85-88. Tbal. Lat. starts with a rhythmic pattern of slashes and eighth notes with accents. Cgas. and Gro. have eighth notes with triplets and a 7-measure rest.

Oriza

89

Tbal. Lat.

Oriza

Cgas.

Oriza

Gro.

89

Measures 89-92. Tbal. Lat. has a rhythmic pattern of slashes and eighth notes with accents. Cgas. and Gro. have eighth notes with triplets and a 7-measure rest.

93

Tbal. Lat.

Cgas.

Gro.

93

Measures 93-96. Tbal. Lat., Cgas., and Gro. have eighth notes with triplets and a 7-measure rest.



Paseo (Base)

97

Tbal. Lat.

Cgas.

Gro.

101

Tbal. Lat.

Cgas.

Gro.

Paseo (Var. 6)

105

Tbal. Lat.

Cgas.

Gro.

109

Tbal. Lat.

Cgas.

Gro.

Paseo (Var. 7)

113

Tbal. Lat.

Cgas.

Gro.

117

Tbal. Lat.

Cgas.

Gro.

121 Cumbia IV

Tbal. Lat.

Cgas.

Gro.

125 *accel.*

Tbal. Lat.

Cgas.

Gro.

$\text{♩} = 125$  Mercumbé (Base)

129

Tbal. Lat.

Cgas.

Gro.

Mercumbé (Base)

133

Tbal. Lat.

Cgas.

Gro.

Merecumbé (Var. 1)

137

Tbal. Lat.

Cgas.

Gro.

141

Tbal. Lat.

Cgas.

Gro.

Merecumbé (Var. 2)

145

Tbal. Lat.

Cgas.

Gro.

149

Tbal. Lat.

Cgas.

Gro.

Merecumbé (Var. 3)

153

Tbal. Lat.

Cgas.

Gro.

157

Tbal. Lat.

Cgas.

Gro.

161

Voz

Tbal. Lat.

Cgas.

Gro.

¡A go zar con Co lom bia Tro pi cal!

Merecumbé (Var. 4)

165

Tbal. Lat.

Cgas.

Gro.

2. Colombia Tropical.

Merecumbé (Var. 5)

169

Tbal. Lat.

Cgas.

Gro.

Merecumbé (Var. 5)

Merecumbé (Var. 5)

173

Tbal. Lat.

Cgas.

Gro.

Merecumbé (Var. 5)

Merecumbé (Var. 6)

177

Tbal. Lat.

Cgas.

Gro.

Merecumbé (Var. 6)

Merecumbé (Var. 6)

181

Tbal. Lat.

Cgas.

Gro.

185

Tbal. Lat.

Cgas.

Gro.

189

Tbal. Lat.

Cgas.

Gro.

Merecumbé (Var. 2)



193

Tbal. Lat.

Cgas.

Gro.

197

Tbal. Lat.

Cgas.

Gro.

Merecumbé (Var. 7)

201

Tbal. Lat.

Cgas.

Gro.

205

Tbal. Lat.

Cgas.

Gro.

209

Tbal. Lat.

Cgas.

Gro.

213

Tbal. Lat.

Cgas.

Gro.

Voz

*¡A ja!*

# 2. Colombia Tropical.

Cumbia, Paseo y Merecumbé.

Compositor: Juan Esteban Arias Carvajal.

Docente: Víctor Hugo Zapata Gómez.

$\text{♩} = 95$

Cumbia I

Musical notation for Cumbia I, consisting of two staves. The first staff is in 2/4 time and contains several triplet patterns. The second staff is in 7/8 time and features a mix of eighth and quarter notes with rests.

Paseo (Base)

Paseo (Var. 1)

Musical notation for Paseo (Base) and Paseo (Var. 1). The first staff shows a rhythmic pattern with accents and rests, followed by a large number '4'. The second staff shows a similar pattern with accents and rests.

Paseo (Var. 2)

Musical notation for Paseo (Var. 2), starting with a large number '5' and followed by a rhythmic pattern with accents and rests.

Paseo (Var. 3)

Musical notation for Paseo (Var. 3), starting with a large number '5' and followed by a rhythmic pattern with accents and rests.

Musical notation for Paseo (Var. 4), starting with a large number '3' and followed by a rhythmic pattern with accents and rests.

Musical notation for Paseo (Var. 5), starting with a large number '3' and followed by a rhythmic pattern with accents and rests.

Cumbia II

Musical notation for Cumbia II, featuring a rhythmic pattern with accents and rests.

2. Colombia Tropical.

First musical staff with notes and rests.

Paseo (Var. 4)

Second musical staff with notes, rests, and a large '4' time signature.

Third musical staff with notes and rests.

Paseo (Base)

Fourth musical staff with notes, rests, and a large '6' time signature.

Cumbia III

Fifth musical staff with notes and rests.

Paseo (Var. 5)

Sixth musical staff with notes, rests, and two large '4' time signatures.

Oriza

Seventh musical staff with notes, rests, and triplets.

Paseo (Base)

Eighth musical staff with notes, rests, and large '5' and '4' time signatures.

Paseo (Var. 6)

Paseo (Var. 7)

Cumbia IV

*accel.*

$\text{♩} = 125$  Mercumbé (Base)

Mercumbé (Var. 1)

Mercumbé (Var. 2)

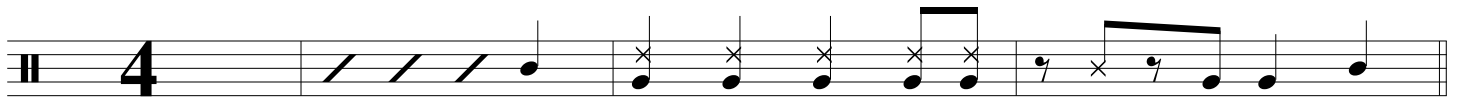
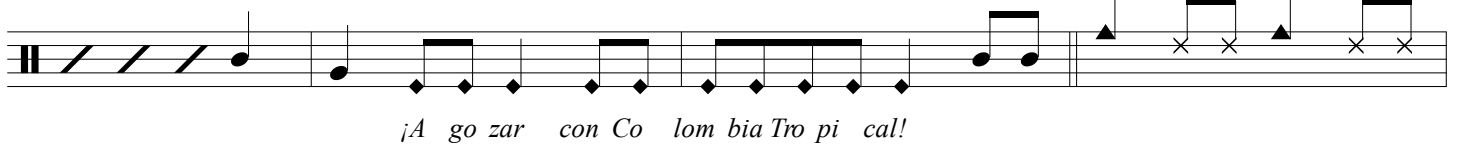
## 2. Colombia Tropical.

## Merecumbé (Var. 3)



Voz

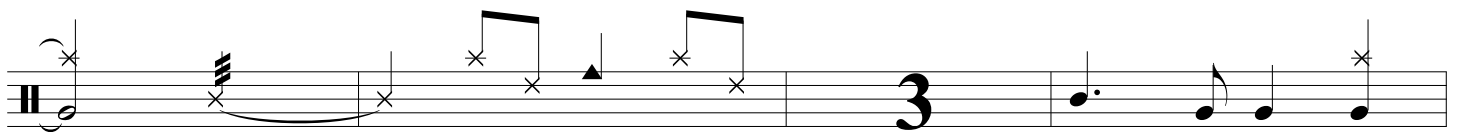
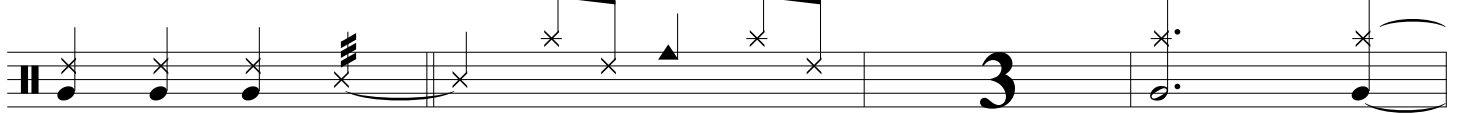
## Merecumbé (Var. 4)



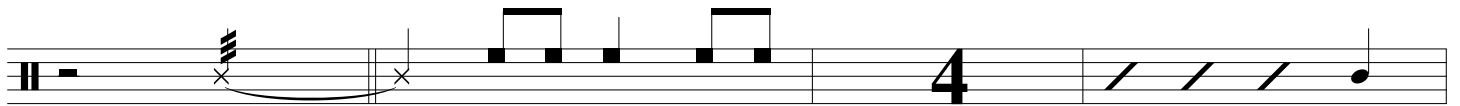
## Merecumbé (Var. 5)



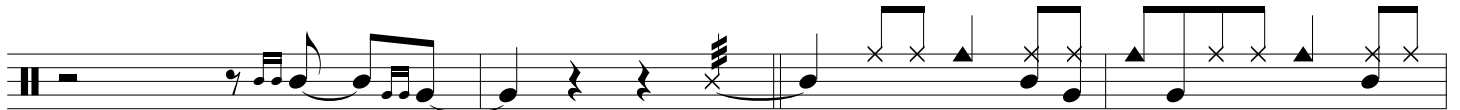
## Merecumbé (Var. 6)



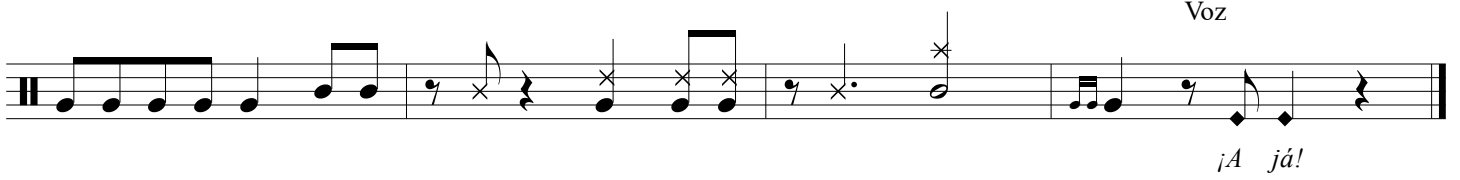
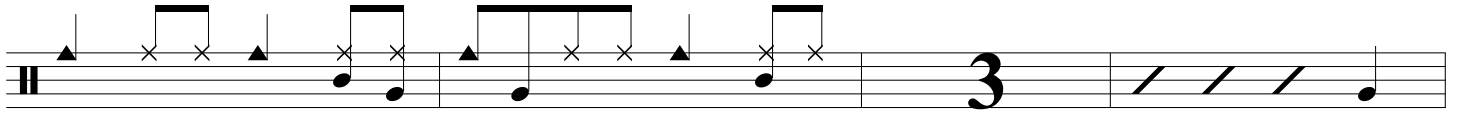
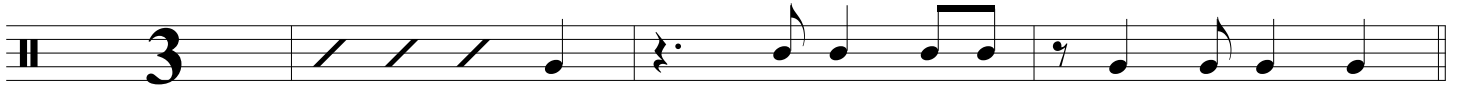
## Merecumbé (Var. 2)



## Merecumbé (Var. 7)



2. Colombia Tropical.



Congas

Cuatro Obras para Ensemble de Percusión Latina con Acompañamiento de Pistas de Audio.

## 2. Colombia Tropical.

Cumbia, Paseo y Mercumbé.

Compositor: Juan Esteban Arias Carvajal.

Docente: Víctor Hugo Zapata Gómez.

$\text{♩} = 95$

Cumbia I

Paseo (Base)

Paseo (Var. 1)

Paseo (Var. 2)

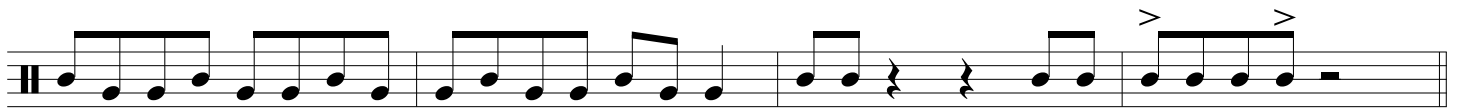
Paseo (Var. 3)

Cumbia II



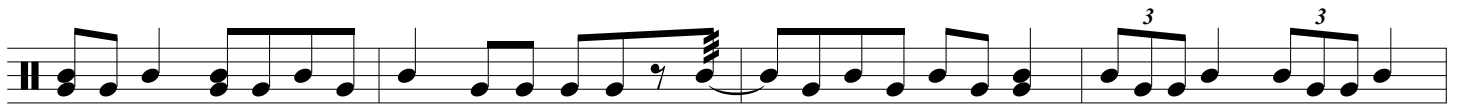
2. Colombia Tropical.

Paseo (Var. 4)

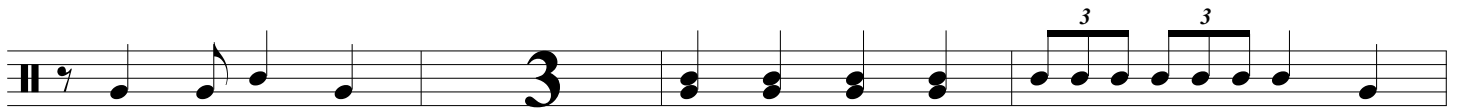
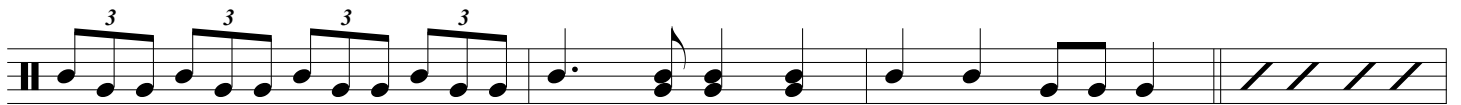


Paseo (Base)

Cumbia III



Paseo (Var. 5)



Oriza



2. Colombia Tropical.

Paseo (Base)

Musical notation for the base of the 'Paseo' piece. It features a treble clef, a key signature of one sharp (F#), and a 4/4 time signature. The melody consists of eighth and quarter notes, with a repeat sign at the end.

Paseo (Var. 6)

Musical notation for the sixth variation of 'Paseo'. It includes a treble clef, a key signature of one sharp, and a 4/4 time signature. The melody features two triplet markings over eighth notes.

Continuation of the musical notation for 'Paseo (Var. 6)', showing a 4/4 time signature and a sequence of eighth and quarter notes.

Paseo (Var. 7)

Musical notation for the seventh variation of 'Paseo'. It features a treble clef, a key signature of one sharp, and a 3/4 time signature. The melody includes eighth notes and a final measure with a cross symbol.

Cumbia IV

Musical notation for 'Cumbia IV'. It features a treble clef, a key signature of one sharp, and a 2/4 time signature. The melody is primarily composed of eighth notes.

*accel.*

Continuation of the musical notation for 'Cumbia IV', marked 'accel.'. It features a treble clef, a key signature of one sharp, and a 2/4 time signature. The melody includes triplet markings and a section of sixteenth notes.

Merecumbé (Base)

Musical notation for the base of 'Merecumbé'. It features a treble clef, a key signature of one sharp, and a 6/8 time signature. The melody consists of eighth and quarter notes.

Merecumbé (Var. 1)

Musical notation for the first variation of 'Merecumbé'. It features a treble clef, a key signature of one sharp, and a 7/8 time signature. The melody includes a quarter rest.

Merecumbé (Var. 2)

Musical notation for the second variation of 'Merecumbé'. It features a treble clef, a key signature of one sharp, and a 5/8 time signature. The melody includes a quarter rest and a final eighth note.

## 2. Colombia Tropical.

## Merecumbé (Var. 3)



## Merecumbé (Var. 4)

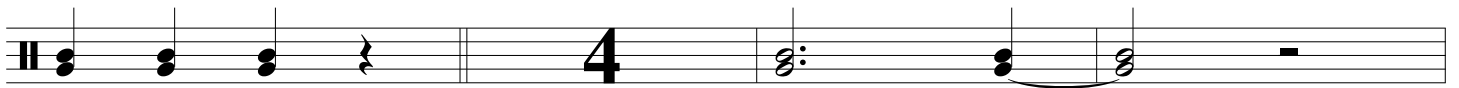
Voz

Musical notation for Merecumbé (Var. 4) on a single staff. It includes a vocal line with lyrics: *¡A go zar con Co lom bia Tro pi cal!*. The notation features a treble clef, a key signature of one sharp, and a common time signature. A large number '5' is placed below the staff, indicating a five-measure phrase. The phrase ends with a double bar line and a repeat sign.

## Merecumbé (Var. 5)



## Merecumbé (Var. 6)



## Merecumbé (Var. 2)



## Merecumbé (Var. 7)



## Voz

Musical notation for Merecumbé (Var. 7) on a single staff. It includes a vocal line with lyrics: *¡A já!*. The notation features a treble clef, a key signature of one sharp, and a common time signature. A large number '5' is placed below the staff, indicating a five-measure phrase. The phrase ends with a double bar line and a repeat sign.

Güiro

Cuatro Obras para Ensemble de Percusión Latina con Acompañamiento de Pistas de Audio.

## 2. Colombia Tropical.

Cumbia, Paseo y Mercumbé.

Compositor: Juan Esteban Arias Carvajal.

Docente: Víctor Hugo Zapata Gómez.

$\text{♩} = 95$

Cumbia I

Musical notation for Cumbia I. It consists of two staves. The first staff contains two measures of music, each with four groups of triplets (three eighth notes beamed together). The second staff begins with a large number '4' indicating a four-measure rest, followed by two measures of music, each with two groups of triplets.

Paseo (Base)

Paseo (Var. 1)

Musical notation for Paseo (Base) and Paseo (Var. 1). The first staff shows two measures of music: a quarter note followed by an eighth note, then a quarter note, followed by a quarter rest. The second staff begins with a large number '5' indicating a five-measure rest, followed by two measures of music: a quarter note followed by an eighth note, then a quarter note, followed by a quarter note.

Paseo (Var. 2)

Paseo (Var. 3)

Musical notation for Paseo (Var. 2) and Paseo (Var. 3). The first staff shows two measures of music: a quarter note followed by an eighth note, then a quarter note, followed by a quarter rest. The second staff begins with a large number '7' indicating a seven-measure rest, followed by two measures of music: a quarter note followed by an eighth note, then a quarter note, followed by a quarter note.

Musical notation for Paseo (Var. 4). The first staff shows two measures of music: a quarter note followed by an eighth note, then a quarter note, followed by a quarter rest. The second staff shows two measures of music: a quarter note followed by an eighth note, then a quarter note, followed by a quarter rest. The third staff shows two measures of music: a quarter note followed by an eighth note, then a quarter note, followed by a quarter rest. The fourth staff begins with a large number '3' indicating a three-measure rest.

Cumbia II

Musical notation for Cumbia II. The first staff shows two measures of music: a quarter note followed by an eighth note, then a quarter note, followed by a quarter rest. The second staff shows two measures of music: a quarter note followed by an eighth note, then a quarter note, followed by a quarter rest. The third staff shows two measures of music: a quarter note followed by an eighth note, then a quarter note, followed by a quarter rest. The fourth staff begins with a large number '4' indicating a four-measure rest.

Musical notation for Cumbia II. The first staff shows two measures of music: a quarter note followed by an eighth note, then a quarter note, followed by a quarter rest. The second staff shows two measures of music: a quarter note followed by an eighth note, then a quarter note, followed by a quarter rest. The third staff shows two measures of music: a quarter note followed by an eighth note, then a quarter note, followed by a quarter rest. The fourth staff begins with a large number '4' indicating a four-measure rest.

Paseo (Var. 4)

Musical notation for Paseo (Var. 4). The first staff shows two measures of music: a quarter note followed by an eighth note, then a quarter note, followed by a quarter rest. The second staff shows two measures of music: a quarter note followed by an eighth note, then a quarter note, followed by a quarter rest. The third staff shows two measures of music: a quarter note followed by an eighth note, then a quarter note, followed by a quarter rest. The fourth staff begins with a large number '5' indicating a five-measure rest.

Musical notation for Paseo (Var. 4). The first staff shows two measures of music: a quarter note followed by an eighth note, then a quarter note, followed by a quarter rest. The second staff shows two measures of music: a quarter note followed by an eighth note, then a quarter note, followed by a quarter rest. The third staff shows two measures of music: a quarter note followed by an eighth note, then a quarter note, followed by a quarter rest. The fourth staff begins with a large number '5' indicating a five-measure rest.

2. Colombia Tropical.

Paseo (Base)

Cumbia III

Musical staff for Paseo (Base) and Cumbia III. The staff begins with a treble clef and a key signature of one flat. The first measure is a 6/8 time signature. The melody consists of eighth and quarter notes. The second measure is a 2/4 time signature. The melody continues with quarter and eighth notes.

Paseo (Var. 5)

Musical staff for Paseo (Var. 5). The staff begins with a treble clef and a key signature of one flat. The first measure is a 4/4 time signature. The melody consists of quarter and eighth notes. The second measure is a 5/4 time signature. The melody continues with quarter and eighth notes.

Oriza

Musical staff for Oriza. The staff begins with a treble clef and a key signature of one flat. The first measure is a 6/8 time signature. The melody consists of eighth and quarter notes, including two triplet markings. The second measure is a 6/8 time signature. The melody continues with eighth and quarter notes.

Paseo (Base)

Musical staff for Paseo (Base). The staff begins with a treble clef and a key signature of one flat. The first measure is a 4/4 time signature. The melody consists of quarter and eighth notes. The second measure is a 4/4 time signature. The melody continues with quarter and eighth notes, ending with a fermata.

Paseo (Var. 6)

Musical staff for Paseo (Var. 6). The staff begins with a treble clef and a key signature of one flat. The first measure is a 6/8 time signature. The melody consists of eighth and quarter notes, including two triplet markings. The second measure is a 6/8 time signature. The melody continues with eighth and quarter notes.

Paseo (Var. 7)

Musical staff for Paseo (Var. 7). The staff begins with a treble clef and a key signature of one flat. The first measure is a 5/4 time signature. The melody consists of quarter and eighth notes, including a fermata. The second measure is a 5/4 time signature. The melody continues with quarter and eighth notes.

Cumbia IV

Musical staff for Cumbia IV. The staff begins with a treble clef and a key signature of one flat. The first measure is a 4/4 time signature. The melody consists of quarter and eighth notes. The second measure is a 4/4 time signature. The melody continues with quarter and eighth notes, ending with a fermata.

*accel.*

$\text{♩} = 125$  Mercumbé (Base)

Musical staff for Mercumbé (Base). The staff begins with a treble clef and a key signature of one flat. The first measure is a 7/8 time signature. The melody consists of eighth and quarter notes. The second measure is a 7/8 time signature. The melody continues with eighth and quarter notes.

2. Colombia Tropical.

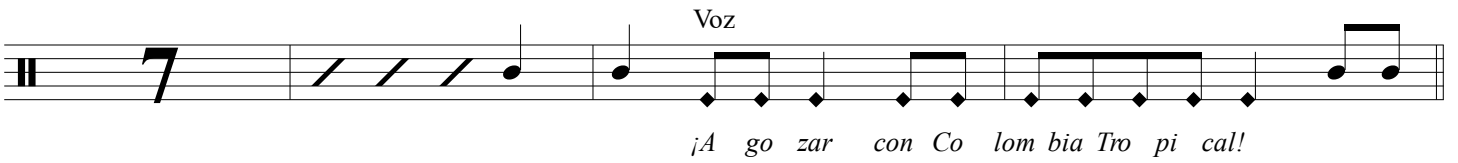
Merecumbé (Var. 1)



Merecumbé (Var. 2)



Merecumbé (Var. 3)



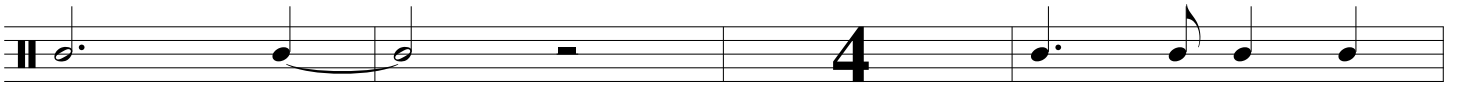
Merecumbé (Var. 4)



Merecumbé (Var. 5)



Merecumbé (Var. 6)



Merecumbé (Var. 2)



Merecumbé (Var. 7)



2. Colombia Tropical.

