

Spatial association between the multidimensional poverty index and glycated hemoglobin control in patients with diabetes in Colombia: a population-based secondary data analysis

Juan Pablo Pérez Bedoya^{1,2,3,*}, Alejandro Mejía Muñoz^{2,4}, Lina Marcela Ruiz Galvis¹, Elizabeth Herrera Franco^{1,2}, Flor Enid Taparcua Cardona^{1,2}, Oscar Ignacio Mendoza Cardozo^{1,2}, Carlos Andrés Pérez Aguirre⁵, Noël Christopher Barengo⁶, Paula Andrea Diaz Valencia^{1,2}

¹Epidemiology Group, National Faculty of Public Health, University of Antioquia UdeA, 70th Street No. 52-21, Medellín, Colombia, ²Type 1 Diabetes Epidemiology Study Group (EpiDiab), University of Antioquia, Medellín, Colombia, ³Member of the JENIOUS group, International Society for Pediatric and Adolescent Diabetes (ISPAD), Berlin, Germany, ⁴Biology and Control of Infectious Diseases Group, Faculty of Exact and Natural Sciences, University of Antioquia, Medellín, Colombia, ⁵Statistics Institute, National University of Colombia, Medellín, Colombia, ⁶Department of Medical Education, Herbert Wertheim College of Medicine, Florida International University, Miami, United States.

Objective: To examine the spatial association between the multidimensional poverty index and the proportion of patients with diabetes presenting a glycated hemoglobin less than 7% in Colombia.

Methods: Ecological study of secondary sources with data aggregated at the departmental level. The multidimensional poverty index was collected from the Colombian National Administrative Department of Statistics for the year 2021. The proportion of patients with diabetes who had a glycated hemoglobin less than 7% were derived from the High-Cost Account during the year 2021. We calculated Moran's I statistics and local indicators of univariate (LISA) and bivariate (BiLISA) spatial association along with significance map, cluster map and Moran's scatter plot. Queen's first-order contiguity matrix was used to produce spatial weights. Results were based on 99999 permutations with a pseudo-significance level of 0.05.

Results: The multidimensional poverty index (Global Moran's I: 0.417, $p < 0.001$) and the proportion of patients with diabetes who had a glycated hemoglobin less than 7% (Global Moran's I: 0.451, $p < 0.001$) showed positive and statistically significant values with a cluster-like pattern. In the case of the bivariate local Moran's I, a value of -0.385 ($p < 0.001$) was obtained between both variables. The BiLISA measures showed the conformation of clusters by departments, indicating the clustering of a low poverty index and a high proportion of patients with glycated hemoglobin less than 7% in the northwest region. On the contrary, a grouping with a high poverty index and a low proportion of patients with glycated hemoglobin less than 7% was found in the eastern and southeastern regions of the country.

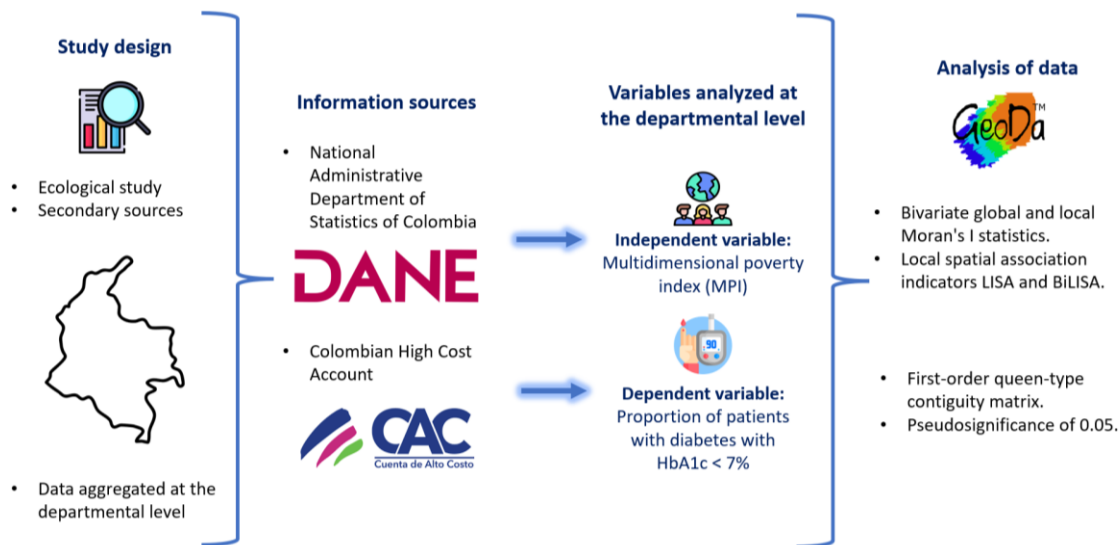


Figure 1. Study methodology

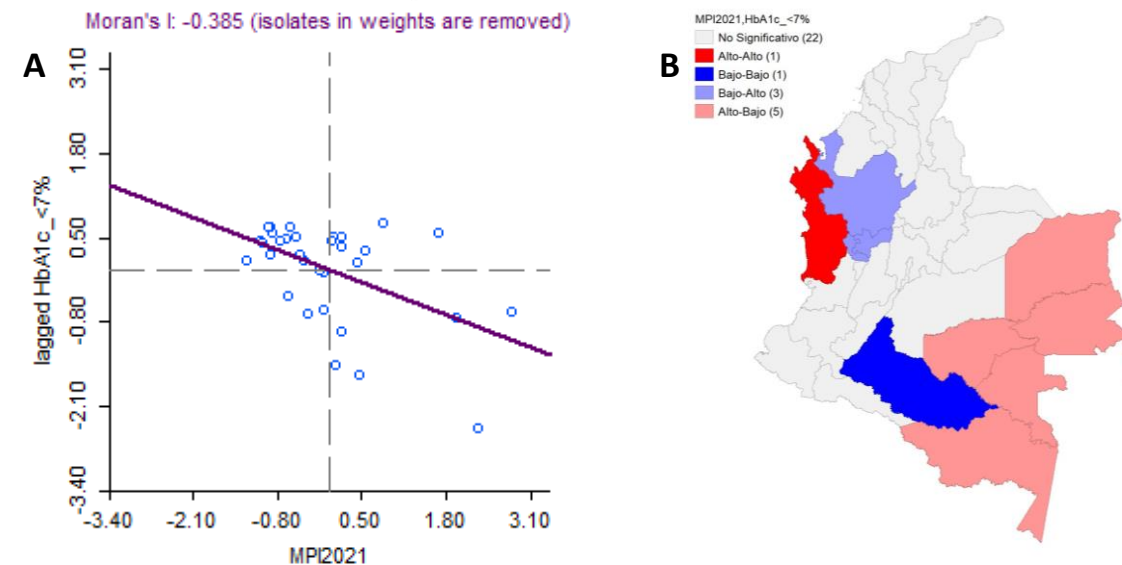


Figure 2. Scatter diagram of bivariate local Morán's I at departmental level, between HbA1c < 7% and MPI (A). Cluster map by department between HbA1c < 7% and MPI (B).

Conclusion: Public health actions aimed at the metabolic control of patients with diabetes should be better targeted in regions with greater socioeconomic inequalities.

