



## Direct Injury, Myiasis, Forensics

# Evidence of two mitochondrial lineages and genetic variability in forensically important *Lucilia eximia* (Diptera: Calliphoridae) in Colombia

Juliana Pérez-Pérez<sup>1,✉</sup>, John Alexander Pulgarín Díaz<sup>2,3,\*</sup>, Andrés López-Rubio<sup>4,✉</sup>, Luz M. Gómez-Piñerez<sup>4,✉</sup>, Guillermo Rúa-Uribe<sup>1,✉</sup>, Edna J. Márquez<sup>5,✉</sup>

<sup>1</sup>Grupo Entomología Médica, Facultad de Medicina, Universidad de Antioquia, Medellín, Colombia, <sup>2</sup>School of Forest Sciences, University of Eastern Finland, Joensuu, Finland, <sup>3</sup>Corporación Colombiana de Investigación Agropecuaria — AGROSAVIA, Centro de Investigación El Nus — Vereda ICA, Corregimiento San José del Nus, municipio de San Roque, Antioquia, Colombia, <sup>4</sup>Tecnológico de Antioquia I. U., Facultad de Derecho y Ciencias Forenses, Grupo de Investigación Bioforense, Medellín, Colombia and <sup>5</sup>Facultad de Ciencias, Escuela de Biociencias, Laboratorio de Biología Molecular y Celular, Universidad Nacional de Colombia Sede Medellín, Medellín, Colombia \*Corresponding author, mail: [jpulgarin@agrosavia.co](mailto:jpulgarin@agrosavia.co), [alexander.pulgarin.diaz@uef.fi](mailto:alexander.pulgarin.diaz@uef.fi)

Subject Editor: Douglas Norris

Received on 14 October 2022; revised on 16 February 2023; accepted on 13 March 2023

*Lucilia eximia* (Wiedemann, 1819) (Diptera: Calliphoridae) is a blowfly with medical and forensic importance that shows genetic and color variation, however, these variations have not justified the description of new species. But in forensic entomology an accurate identification of species and subpopulations is crucial. We explored the genetic variation of *L. eximia* from eight localities, in five natural regions in Colombia using two mitochondrial fragments, including the standard locus for insect identification *COI* and the *Cytb-tRNA-Ser-ND1* region. We found significant differentiation at *COI* and *Cytb-tRNA-Ser-ND1* level, characterizing two lineages and revealing a deep and significant genetic split. High values of  $F_{ST}$  and genetic distances supported the two lineages. The origin of the divergence of *L. eximia* remains to discover. Examining whether the lineages have diverse ecological and biological behaviors could be a significant impact on the use of *L. eximia* in forensic and medical science. Our results could have relevant implications for the use of post-mortem interval estimation based on insect evidence, as well as our sequences improve the database used in DNA-based methods for identifying forensically important flies.

**Key words:** forensic entomology, lineages, *COI*, *Cytb-tRNA-Ser-ND1*, variability, blowflies

## Introduction

Many of us relate *Lucilia eximia* (Wiedemann, 1819) (Diptera: Calliphoridae) as an annoying fly, despite its valuable and unexpected uses. Applying controlled myiasis, their larvae remove necrotic tissue of chronic wounds (Wolff et al. 2010). Its developmental rate helps forensic entomologists to estimate the time of death of a corpse (Catts and Goff 1992, Acosta et al. 2021). Also, entomological evidence provides valuable information concerning the circumstances of death, including season, location, movement or storage after death, use of drugs, and even linking child neglect (Benecke and Lessig 2001, Amendt et al. 2007). But the use of entomological evidence relies on accurate species identification and subpopulations (Tomberlin et al. 2011).

Despite its value, morphology-based identification of insects shows limitations (Gemmellaro et al. 2019). Taxonomic keys are not always

available and can be difficult to use, especially when identifying immature stages or cryptic species (Harvey et al. 2003, Zehner et al. 2004). *Lucilia eximia* exhibits color patterns and genetic variability when comparing mainland and island specimens (Whitworth 2010, 2014). In one study in Colombia, *L. eximia* exhibited a high level of variability based on the Cytochrome Oxidase I gene (*COI*), suggesting the presence of two species within—also called cryptic species (Solano et al. 2013). However, this study suggested including more specimens from a wider distribution range in Colombia (Solano et al. 2013).

Regarding the color patterns of *L. eximia*, its vestiture varies from silver, silver-gold to gold (Whitworth 2010). Probably this variation is a result of geographical differences. These color variations as well as genetic variation lead to the description of new species in several groups of insects (Guerrero and Fernández 2008,

Badejo et al. 2020). Most insects show morphological variation, often related to geographical origin, and landscape alteration—as a result of urbanization (Theodorou 2022). But this variation increases the difficulty to identify (Carolan et al. 2012) and include them in posterior studies.

Mitochondrial genes help to identify insects, including Calliphoridae (Stevens and Wall 2001, Salem et al. 2015, Fuentes-López et al. 2020). Specifically, a short fragment of the *COI* gene is reliable for species identification, even identifying cryptic species (Mathur et al. 2012, Scarpassa and Alencar 2012). The Cytochrome b gene (*Cytb*) is also used to study intraspecific variability in Diptera (GilArriortua et al. 2013, Pech-May et al. 2018). For instance, to study the *L. eximia* genetic variability Giraldo et al. (2011) used a fragment of mitochondrial DNA including the *Cytb* and the NADH dehydrogenase genes (*Cytb-tRNA-Ser-ND1*). However, this study showed a moderate level of variability, conversely to the high level of variability revealed by *COI* sequences in Colombian specimens (Solano et al. 2013).

To study the genetic variability of *L. eximia*, we analyzed specimens collected from eight localities in five Colombia natural areas, using two mitochondrial fragments, the *COI* barcode region

and *Cytb-tRNA-Ser-ND1*. We expected to find substantial variation between *L. eximia* populations.

## Methods

*Lucilia eximia* adults were collected in eight localities from five natural areas in Colombia defined by IGAC (1997), including highly disturbed areas, semi-rural areas, and secondary forests (Table 1).

We used Van Someren-Rydon traps (DeVries 1987) using a mixture of rotten fish heads and chicken viscera as bait. In each locality, we placed four traps at 1.5 m above the ground for 96 h and separated the traps 200 m from each other. Every 48 h, we replaced the baits and collected the specimens and identified the samples using taxonomic keys for the Neotropical species of *Lucilia* (Whitworth 2010, 2014).

From one specimen leg of the 61 collected specimens, we extracted DNA using the DNeasy Blood & Tissue Handbook (Qiagen) kit. A 650 pb fragment from the *COI* gene was amplified using primers developed by Folmer et al. (1994) and PCR amplification following the Solano et al. (2013) protocols. A second fragment of 492 pb was amplified from the *Cytb-tRNA-Ser-ND1* region, using primers developed by Ready et al. (1997). The PCR products were visualized on 0.8% agarose gel using Ezvision (AMRESCO) under UV light and sequenced bi-directionally (Macrogen Inc. Korea). Sequences were checked against available records in the National Center for Biotechnology Information (NCBI) using the BLAST algorithm. Finally, we verified possible mitochondrial copies at the nucleus (NUMT) by BLASTN search and analyzing codons as suggested by Hlaing et al. (2009) and assembled the sequences using the genome of *L. sericata* (NC\_009733) in Geneious v.8.0.4.

We calculated haplotype diversity (Hd), haplotype number (n), nucleotide diversity ( $\pi$ ), and genetic diversity parameters using DNASP v. 6.0 (Librado and Rozas 2009) and calculated genetic distances based on Kimura two parameters model. To examine the relationship between haplotypes, we built a haplotype network using Network v. 4.6.2.2. (Bandelt et al. 1999).

Based on the concatenation of the *COI* and the *Cytb-tRNA-Ser-ND1* genes, we built a tree using Bayesian Inference Analysis and applied the evolutionary model GTR + T based on the Akaike criterion (Akaike 1974), through MrBayes v. 3.1.2 (Ronquist and

**Table 1.** Collection localities for *Lucilia eximia* specimens

Natural region	Localities, department	Coordinates	n
Amazon	Leticia, Amazonas	04°12'40.1" S 69°56' 32.8" W	6
Andean	Caldas-Medellín, Antioquia	06°03'06.9" N 75°37'19.2" W	9
Andean	Cola del Zorro-Medellín, Antioquia	06°12'19.7" N 75°32'43.9" W	9
Andean	Copacabana, Antioquia	06°22'07.1" N 75°29'22.3" W	11
Andean	Pajarito-Medellín, Antioquia	06°17'10.7" N 75°36'43.7" W	7
Pacific	Playa Huina, Chocó	06°16'0.7" N 77°27'16.3" W	3
Caribbean	Santa Marta, Magdalena	11°8'34.20" N 74°6'31.50" W	7
Orinoquia	Puerto Gaitán, Meta	04°21'27.96" N 71°57'00.86" W	9

**Table 2.** Genetic diversity of *COI* and *Cytb-tRNA-Ser-ND1* sequences in *Lucilia eximia* from Colombia

Molecular marker	Sample	Number of sequences (n)	Number of haplotypes (h)	Haplotype (frequency)	Haplotype diversity (Hd)	Nucleotide diversity ( $\pi$ )	Genetic distances K2P (%)
<i>COI</i>	Lineage I	17	9	H7(1), H8(1), H9(2), H10(1), H11(3), H12(1), H13(1), H14(6), H15(1)	0.860 ± 0.005	0.005 ± 0.000	0.2–1.2
	Lineage II	29	7	H1(13), H2(8), H3(1), H4(1), H5(1), H6(1), H16(4)	0.724 ± 0.004	0.003 ± 0.000	0.2–2.4
	All samples	46	16	H1(13), H2(8), H3(1), H4(1), H5(1), H6(1), H7(1), H8(1), H9(2), H10(1), H11(3), H12(1), H13(1), H14(6), H15(1), H16(4)	0.873 ± 0.031	0.027 ± 0.002	0.2–6.2
<i>Cytb-tRNA-Ser-ND1</i>	Lineage I	19	4	H5b (3), H6b (13), H7b (2), H8b (1)	0.521 ± 0.015	0.002 ± 0.000	0.2–0.6
	Lineage II	42	4	H1b (37), H2b (3), H3b (1), H4b (1)	0.223 ± 0.007	0.001 ± 0.000	0.2–0.6
	All samples	61	8	H1b (37), H2b (3), H3b (1), H4b (1), H5b (3), H6b (13), H7b (2), H8b (1)	0.590 ± 0.062	0.011 ± 0.001	0.2–2.9

H1 to H16 *COI* haplotypes; H1b to H8b *Cytb-tRNA-Ser-ND1* haplotypes of *Lucilia eximia*. Inside the parentheses is the number of individuals observed for each haplotype.

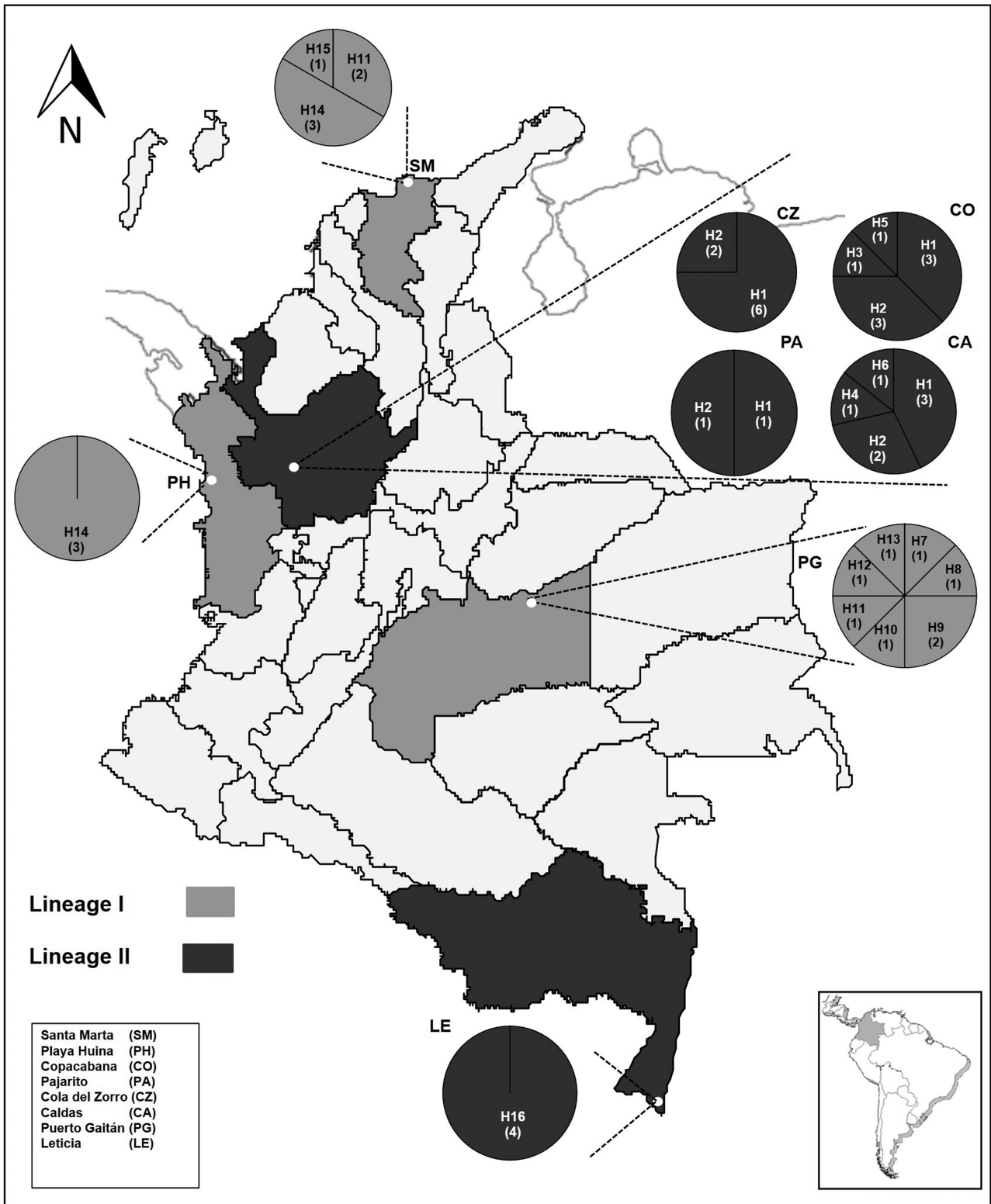


Fig. 1. Localities, frequency, and distribution of *COI* haplotypes (H1–H16) of *Lucilia eximia* from Colombia. Numbers in parentheses indicate the number of specimens by haplotype.

Huelsenbeck 2003). We calculated the pairwise  $F_{ST}$  values using Arlequin v. 3.1 (Excoffier et al. 2005) and used the Mantel test to analyze the correlation between geographic distances and  $F_{ST}$  values using XLSTAT v.3.9.

**Results**

The mitochondrial dataset included 46 sequences, representing 16 haplotypes of the *COI* region (H1 to H16 *COI* haplotypes) and 61 sequences, representing 8 haplotypes of the *Cytb-tRNA-Ser-ND1*

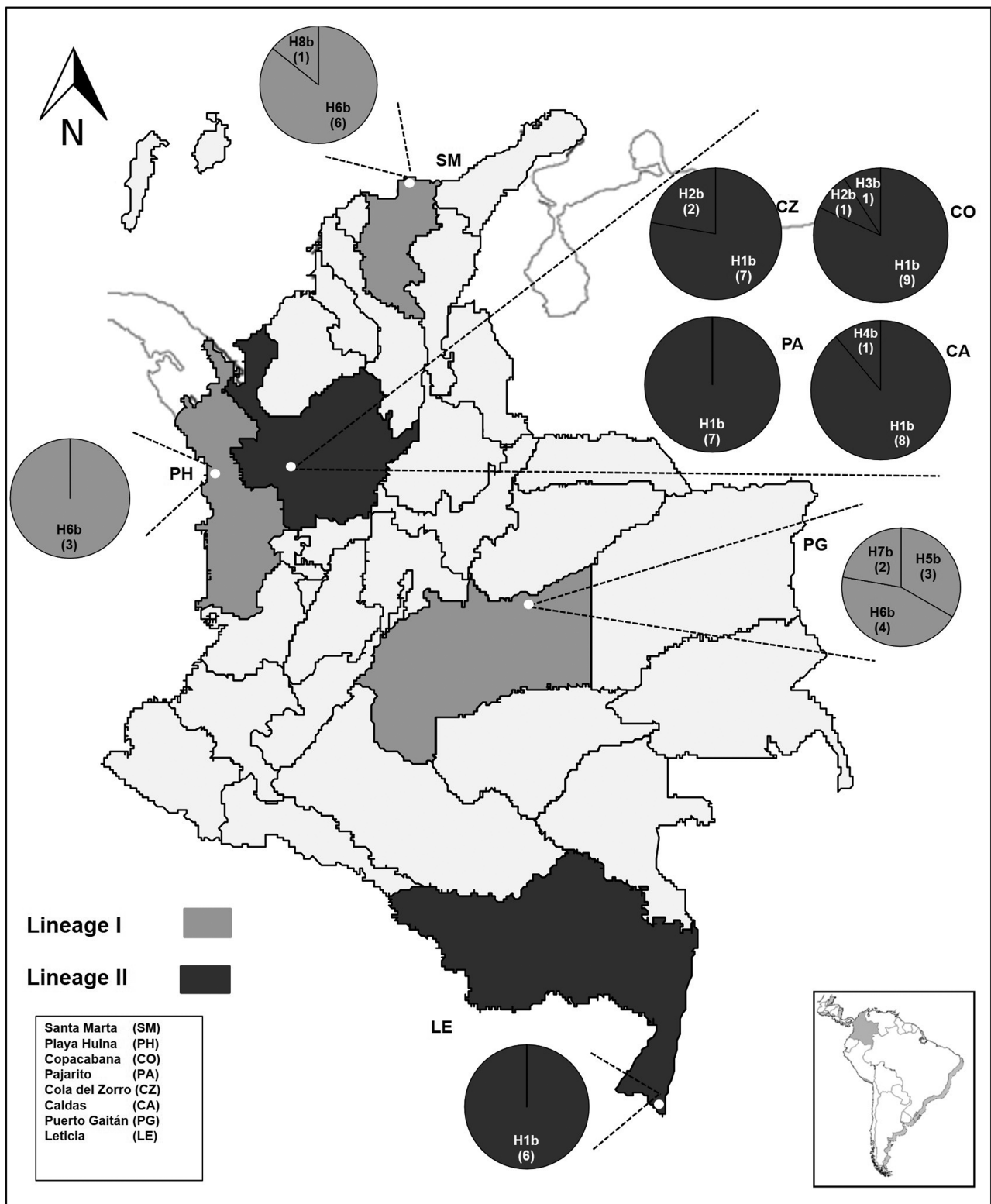
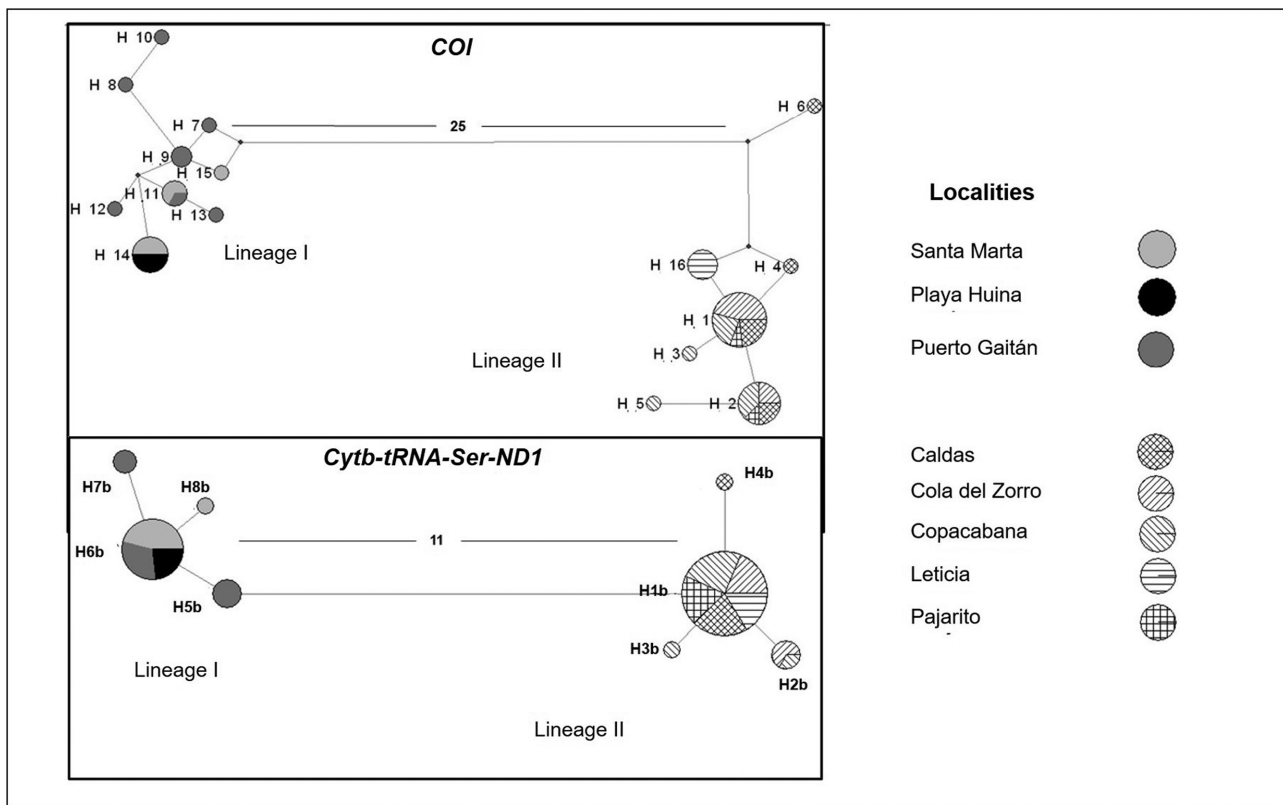


Fig. 2. Frequency and distribution of *Cytb-tRNA-Ser-ND1* haplotypes (H1b–H8b) of *Lucilia eximia* from Colombia. Numbers in parentheses indicate the number of specimens by haplotype.

region (H1b to H8b *Cytb-tRNA-Ser-ND1* haplotypes). *COI* sequences were deposited in GenBank under accession number KT160173–KT160218 and the *Cytb-tRNA-Ser-ND1* sequences under KU665416–KU665476 (Supplementary S1). Comparing

*COI* to *Cytb-tRNA-Ser-ND1*, *COI* revealed higher values of genetic distances, haplotype, and nucleotide diversity measures. The intra-specific distance for the *COI* region ranged between 0.0% and 6.2% (Table 2).



**Fig. 3.** Parsimony haplotypes networks of the *COI* and *Cytb-tRNA-Ser-ND1* genes of *Lucilia eximia* from Colombia. The circle sizes are proportional to the number of haplotypes. Numbers between both groups indicate mutational steps.

### Distribution and frequency of haplotypes

We found a total of 16 *COI* haplotypes, their number varied per locality, from one in Playa Huina and Leticia to seven in Puerto Gaitán. H1 (*COI* haplotype 1) had the highest frequency (28.3%) followed by H2 (17.4%) both shared among Copacabana, Caldas, Pajarito, and Cola del Zorro, the four closest localities in Antioquia (Fig. 1).

We found a total of 8 *Cytb-tRNA-Ser-ND1* haplotypes, their number varied per locality, from one haplotype in Playa Huina, Pajarito, and Leticia to three in Copacabana and Puerto Gaitán (Fig. 2). H1b (*Cytb-tRNA-Ser-ND1* haplotype 1) was the most frequent haplotype (60.6%) and was found in Cola del Zorro, Copacabana, Caldas, Pajarito, and Leticia—the first four localities are close to each other but far from the last Leticia. The second most frequent haplotype H6b (21.3%) was distributed in Playa Huina, Puerto Gaitán, and Santa Marta.

Based on haplotype networks *L. eximia* specimens clustered in two groups—hereafter referred to as “lineage I” (*COI*: 9 haplotypes; *Cytb-tRNA-Ser-ND1*: 4 haplotypes) and “lineage II” (*COI*: 7 haplotypes; *Cytb-tRNA-Ser-ND1*: 4 haplotypes), separated by a significant number of mutations. The haplotype network based on *COI* showed 25 mutational steps and the haplotype network based on *Cytb-tRNA-Ser-ND1* showed 11 mutational steps (Fig. 3).

### *Lucilia eximia* genetic lineages

The two lineages of *COI* and *Cytb-tRNA-Ser-ND1* showed non-overlapping geographic distribution. The lineage I clustered specimens from Santa Marta, Playa Huina, and Puerto Gaitán, whereas, the lineage II clustered specimens from Caldas, Cola del

Zorro, Copacabana, Leticia, and Pajarito. The Bayesian concatenated analysis revealed the same clustering (Fig. 4).

Likewise, the  $F_{ST}$  values also showed a significant degree of genetic differentiation between the two lineages (*COI*  $F_{ST} = 0.9334$   $P < 0.001$ ; *Cytb-tRNA-Ser-ND1*  $F_{ST} = 0.6685$   $P < 0.001$ ) and the Mantel test indicated the absence of correlation between  $F_{ST}$  and geographic distances (*COI*,  $r = 0.0450$ ,  $P = 0.9580$  and *Cytb-tRNA-Ser-ND1*,  $r = 0.2720$ ,  $P = 0.1350$ ). Whereas genetic distance ranged from 0.2% to 6.2% between the two lineages. Lineage I showed higher genetic diversity than the lineage II (Table 2). The genetic distance within the lineage I ranged from 0.2% to 1.2%, while within the lineage II ranged from 0.2% to 2.4%.

For lineage I, Puerto Gaitán exhibited the highest *COI* haplotype diversity (*COI*: 7 haplotypes; *Cytb-tRNA-Ser-ND1*: 3 haplotypes). Specimens from Playa Huina showed the lowest *COI* and *Cytb-tRNA-Ser-ND1* diversity, showing one haplotype. For lineage II, all localities of the department of Antioquia shared the two most frequent *COI* haplotypes, but the diversity varied per locality. Copacabana showed the highest *COI* (*COI*: 4 haplotypes; *Cytb-tRNA-Ser-ND1*: 3 haplotypes) followed by Caldas (*COI*: 4 haplotypes; *Cytb-tRNA-Ser-ND1*: 2 haplotypes), whereas Leticia showed the lowest *COI* and *Cytb-tRNA-Ser-ND1* haplotype diversity with a unique haplotype.

### Discussion

This is the first approach to the genetic variability of *L. eximia* in Colombia using two mitochondrial genes. *Lucilia eximia* showed significant levels of genetic variability with two mitochondrial lineages, revealing a deep and significant genetic split. The mutational steps

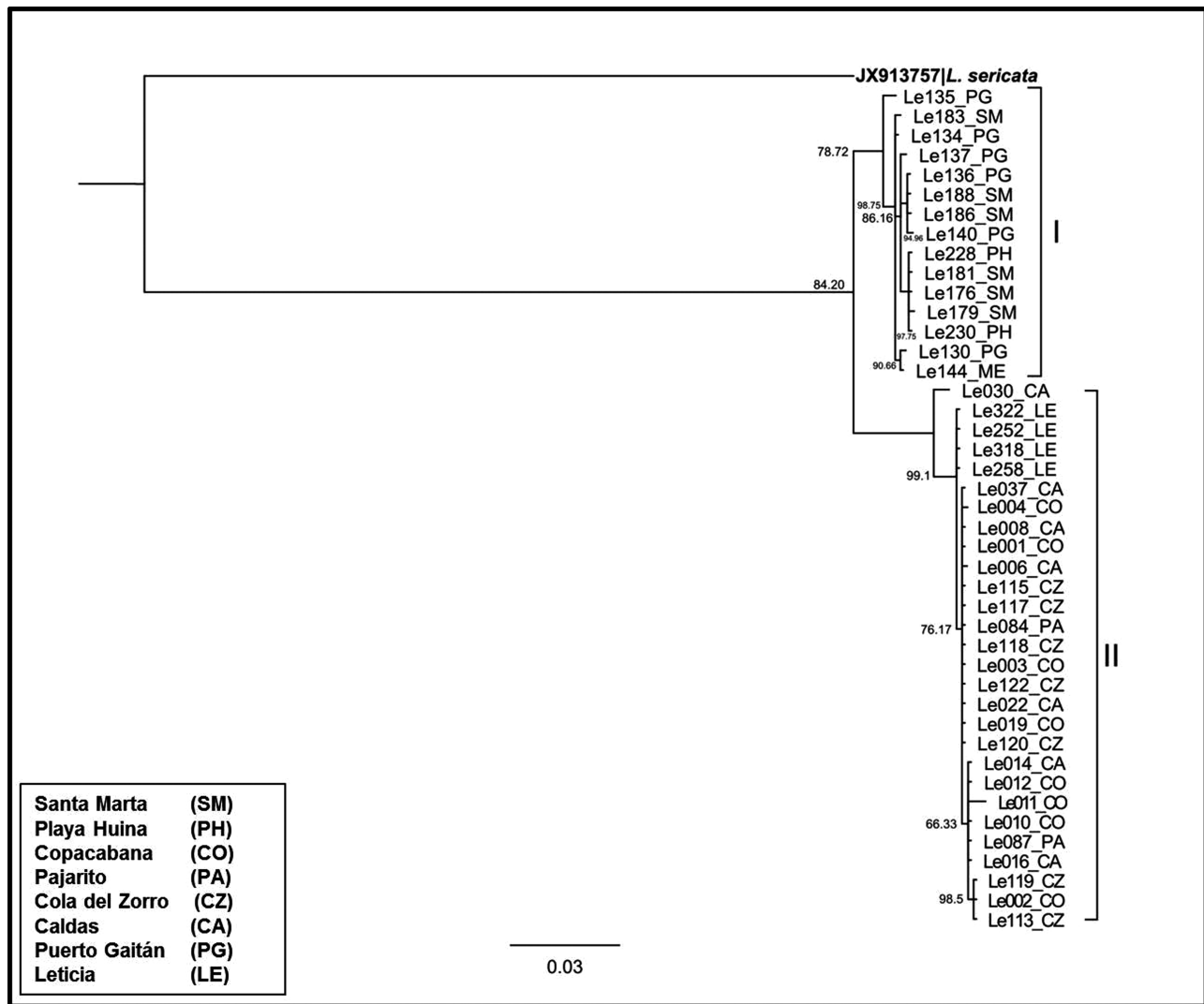


Fig. 4. Bayesian Inference topology tree (under the GTR +T model) based on concatenation of COI and Cytb-tRNA-Ser-ND1 genes of *Lucilia eximia* from Colombia.

observed in the haplotype networks supported the idea of *L. eximia* in Colombia could be a cryptic species complex. Hart and Sunday (2007) found strong evidence that DNA sequences from single species typically stick together in a single haplotype network. Changes from these patterns are usually consistent with hybridization or cryptic species diversity (Motoki et al. 2021, Scarpassa et al. 2021).

Studies using the COI barcode region for delimiting Calliphoridae showed intraspecific distance values between 0.0%–1.487% in Colombia (Solano et al. 2013) and 0.0%–0.612% in Australia (Nelson et al. 2007). We found genetic distance values higher than these previous reports in Colombia and similar to those reported from the Caribbean Region specimens (Yusseff-Vanegas and Agnarsson 2017). Conversely, as observed in the last study, our findings do not appear to be explained by geographical origin specimens. Our results confirmed a substantial intraspecific variation of *L. eximia* in Colombia using the COI barcode and Cytb-tRNA-Ser-ND1 region.

The genetic differences we found in *L. eximia* in Colombia may be influenced by the landscape and its characteristics. The idea that anthropization affects the molecular variability of *L. eximia* has not been yet proposed. Ecological conditions, such as the ones resulting from anthropogenic impact, changed the genetic structure

of other insects (Ashley et al. 2003, Huber et al. 2008). For instance, two populations of *Aedes aegypti* (Diptera: Culicidae) from the forest and urban areas showed genetic differences attributed to environmental factors (Huber et al. 2008). In our study, we did not choose the localities based on the level of anthropization. However, we noticed that the localities which presented the lineage I showed low anthropization levels (semi-rural areas). While the localities which presented the lineage II were urban areas. We hypothesize that the presence and distribution of the lineages of *L. eximia* may be related to the level of anthropization. However, this explanation, it is beyond our purpose and we need additional research to confirm it.

We detected high levels of genetic variability of *L. eximia* based on mitochondrial regions. However, given the lack of information on the nuclear variability of *L. eximia*, further population studies using nuclear genes are crucial to determine the variation at this level. Studies on other species have shown that mitochondrial genetic variation does not necessarily indicate species differentiation. For example, two populations of the blowfly *Phormia regina* (Diptera: Calliphoridae) showed a substantial level of variation in mitochondrial genes but a low variation in nuclear genes and non-morphological variation. This study concluded that the variation

between *P. regina* populations was related to intraspecific mitochondrial divergence rather than species-level differentiation (Jordaens et al. 2013).

Our results could have important implications for the use of *L. eximia* in forensic and other medical fields. In other species, fertility, life cycle, emergence, and adult longevity varied between populations and this variation was related to noteworthy molecular variation (Justiniano et al. 2004, Scarpasa and Alencar 2012, Jordaens et al. 2013). For instance, the forensically important blowfly *P. regina* shows developmental rate variation, which was explained by mitochondrial divergence between populations (Picard and Wells 2009). These findings highlighted the importance of taking into account this variation when using insects in forensic casework. The lineages we found in *L. eximia* may differ biologically, studying the lineages of *L. eximia* in more detail is necessary. Differences in the developmental rate between lineages in *L. eximia* would affect the use of *L. eximia* in forensic entomology applications.

We found significant results when analyzing a small sample of the population, we suggest that future research include more specimens, as well as nuclear genes. In conclusion, *L. eximia* exhibits considerable genetic variability and two mitochondrial lineages in Colombia. It remains to elucidate the origin of this divergence and explore if the lineages exhibit differences in ecological/biological behavior, which may have important implications for the use of *L. eximia* in the forensic field.

## Acknowledgments

We thank the members of the Bioforensics research group (Tecnológico de Antioquia IU), Grupo Entomología Médica (GEM), Universidad de Antioquia and the Molecular Biology Laboratory, Universidad Nacional de Colombia, Medellín for their logistic support during this study. We also thank Minciencias and Colección Entomológica del Tecnológico de Antioquia (CETdeA) for supporting this research.

## Funding

This work was funded by Comité para el Desarrollo de la Investigación (CODEI-grant), Tecnológico de Antioquia Institución Universitaria, with the project “Variabilidad molecular y morfométrica de *Lucilia eximia* (Wiedemann) (Diptera: Calliphoridae) en Colombia” and Ministerio de Ciencia Tecnología e Innovación — MinCiencias contract 80740-836-2020. The funders had no role in study design, data collection and analysis, the decision to publish, or the preparation of the manuscript.

## Conflict of Interest

None declared.

## Supplementary Material

Supplementary material is available at *Journal of Medical Entomology* online.

## References

Acosta X, González-Reyes AX, Corronca JA, Centeno ND. Estimation of the postmortem interval through the use of development time of two South American species of forensic importance of the genus *Lucilia* (Diptera: Calliphoridae). *J Med Entomol.* 2021;58(3):1064–1073. <https://doi.org/10.1093/jme/tjab001>

- Akaike H. A new look at the statistical model identification. *IEEE Trans Automat Contr.* 1974;19(6):716–723. <https://doi.org/10.1109/tac.1974.1100705>
- Amendt J, Campobasso C, Gaudry E, Reiter C, LeBlanc H, Hall MJR. Best practice in forensic entomology—standards and guidelines. *Int J Leg. Med.* 2007;121:90–104.
- Ashley MV, Willson MF, Pergams ORW, O’Dowd DJ, Gende SM, Brown JS. Evolutionarily enlightened management. *Biol Conserv.* 2003;111(2):115–123. [https://doi.org/10.1016/S0006-3207\(02\)00279-3](https://doi.org/10.1016/S0006-3207(02)00279-3)
- Badejo O, Skaldina O, Gilev A, Sorvari J. Benefits of insect colours: a review from social insect studies. *Oecologia.* 2020;194(1-2):27–40. <https://doi.org/10.1007/s00442-020-04738-1>
- Bandelt HJ, Forster P, Röhl A. Median-joining networks for inferring intraspecific phylogenies. *Mol Biol Evol.* 1999;16(1):37–48. <https://doi.org/10.1093/oxfordjournals.molbev.a026036>
- Benecke M, Lessig R. Child neglect and forensic entomology. *Forensic Sci Int.* 2001;120(1-2):155–159. [https://doi.org/10.1016/S0379-0738\(01\)00424-8](https://doi.org/10.1016/S0379-0738(01)00424-8)
- Carolan JC, Murray TE, Fitzpatrick U, Crossley J, Schmidt H, Cederberg B, McNally L, Paxton RJ, Williams PH, Brown MJF. Colour patterns do not diagnose species: quantitative evaluation of a DNA barcoded cryptic bumblebee complex. *PLoS One.* 2012;7:e29251. <https://doi.org/10.1371/journal.pone.0029251>
- Catts E, Goff M. Forensic entomology in criminal investigations. *Annu Rev Entomol.* 1992;37:253–272.
- Excoffier L, Laval G, Schneider S. Arlequin (version 3.0): an integrated software package for population genetics data analysis. *Evol. Bioinforma.* 2005;1:117693430500100.
- Folmer O, Black M, Hoeh W, Lutz R, Vrijenhoek R. DNA primers for amplification of mitochondrial cytochrome c oxidase subunit I from diverse metazoan invertebrates. *Mol Mar Biol Biotechnol.* 1994;3(5):294–299.
- Fuentes-lópez A, Rebelo MT, Romera E, López-lópez A, Galián J. Genetic diversity of Calliphora vicina (Diptera: Calliphoridae) in the Iberian Peninsula based on *cox1*, *16S* and *ITS2* sequences. *Biol J Linn Soc.* 2020;131(4):952–965. <https://doi.org/10.1093/biolinnean/blaa109>
- Gemmellaro MD, Hamilton GC, Ware JL. Review of molecular identification techniques for forensically important Diptera. *J Med Entomol.* 2019;56(4):887–902. <https://doi.org/10.1093/jme/tjz040>
- GilArriortua M, Salona Bordas MI, Cainé LM, Pinheiro F, de Pancorbo MM. Cytochrome b as a useful tool for the identification of blowflies of forensic interest (Diptera, Calliphoridae). *Forensic Sci Int.* 2013;228(1–3):132–136. <https://doi.org/10.1016/j.forsciint.2013.02.037>
- Giraldo P, Uribe SI, López A. Análisis de secuencias de ADN mitocondrial (Cytb y ND1) en. *Rev Colomb Entomol.* 2011;37:110–115.
- Guerrero RJ, Fernández F. A new species of the ant genus *Forelius* (Formicidae: Dolichoderinae). *Zootaxa.* 2008;60:51–60.
- Hart MW, Sunday J. Things fall apart: Biological species form unconnected parsimony networks. *Biol Lett.* 2007;3(5):509–512. <https://doi.org/10.1098/rsbl.2007.0307>
- Harvey ML, Dadour IR, Gaudieri S. Mitochondrial DNA cytochrome oxidase I gene: potential for distinction between immature stages of some forensically important fly species (Diptera) in western Australia. *Forensic Sci Int.* 2003;131(2-3):134–139. [https://doi.org/10.1016/S0379-0738\(02\)00431-0](https://doi.org/10.1016/S0379-0738(02)00431-0)
- Hlaing T, Tun-Lin W, Somboon P, Socheat D, Setha T, Min S, Chang MS, Walton C. Mitochondrial pseudogenes in the nuclear genome of *Aedes aegypti* mosquitoes: Implications for past and future population genetic studies. *BMC Genet.* 2009;10:11. <https://doi.org/10.1186/1471-2156-10-11>
- Huber K, Ba Y, Dia I, Mathiot C, Sall AA, Diallo M. *Aedes aegypti* in Senegal: genetic diversity and genetic structure of domestic and sylvatic populations. *Am J Trop Med Hyg.* 2008;79(2):218–229.
- Jordaens K, Sonet G, Braet Y, De Meyer M, Backeljau T, Goovaerts F, Bourguignon L, Desmyter S. DNA barcoding and the differentiation between North American and West European *Phormia regina* (Diptera, Calliphoridae, Chrysomyinae). *Zookeys.* 2013;174:149–174.
- Justiniano SC, Chagas AC, Pessoa FA, Queiroz RG. Comparative biology of two populations of *Lutzomyia umbratilis* (Diptera: Psychodidae) of Central Amazonia, Brazil, under laboratory conditions. *Braz J Biol.* 2004;64(2):227–235. <https://doi.org/10.1590/S1519-69842004000200007>

- Librado P, Rozas J. DnaSP v5: a software for comprehensive analysis of DNA polymorphism data. *Bioinformatics*. 2009;25(11):1451–1452. <https://doi.org/10.1093/bioinformatics/btp187>
- Mathur S, Cook MA, Sinclair BJ, Fitzpatrick SM. 2012. DNA barcodes suggest cryptic speciation in *Dasineura oxycoccana* (Diptera: Cecidomyiidae) on cranberry, *Vaccinium macrocarpon*, and blueberry, *V. corymbosum*. *Fla Entomol*. 95:387–394.
- Motoki MT, Linton YM, Conn JE, Ruiz-Lopez F, Wilkerson RC. Phylogenetic network of mitochondrial coi gene sequences distinguishes 10 taxa within the neotropical albitarsis group (diptera: Culicidae), confirming the separate species status of *Anopheles albitarsis* h (diptera: Culicidae) and revealing a novel lineage. *J Med Entomol*. 2021;58(2):599–607. <https://doi.org/10.1093/jme/tjaa211>
- Nelson L, Wallman JE, Dowton M. Using COI barcodes to identify forensically and medically important blowflies. *Med Vet Entomol*. 2007;21(1):44–52. <https://doi.org/10.1111/j.1365-2915.2007.00664.x>
- Pech-May A, Ramsey JM, González Ittig RE, Giuliani M, Berrozpe P, Quintana MG, Salomón OD. Genetic diversity, phylogeography and molecular clock of *Lutzomyia longipalpis* complex (Diptera: Psychodidae). *PLoS Negl Trop Dis*. 2018;12:e0006614.
- Picard CJ, Wells JD. Survey of the genetic diversity of *Phormia regina* (Diptera: Calliphoridae) using amplified fragment length polymorphisms. *J Med Entomol*. 2009;46(3):664–670. <https://doi.org/10.1603/033.046.0334>
- Ready PD, Day JC, De Souza AA, Rangel EF, Davies CR. Mitochondrial DNA characterization of populations of *Lutzomyia whitmani* (Diptera: Psychodidae) incriminated in the peri-domestic and silvatic transmission of *Leishmania* species in Brazil. *Bull Entomol Res*. 1997;87:187–195.
- Ronquist F, Huelsenbeck JP. MrBayes 3: Bayesian phylogenetic inference under mixed models. *Bioinformatics*. 2003;19(12):1572–1574. <https://doi.org/10.1093/bioinformatics/btg180>
- Salem AM, Adham FK, Picard CJ. Survey of the genetic diversity of forensically important *Chrysomya* (Diptera: Calliphoridae) from Egypt. *J Med Entomol*. 2015;52(3):320–328. <https://doi.org/10.1093/jme/tjv013>
- Scarpassa VM, Alencar RB. *Lutzomyia umbratilis*, the main vector of *Leishmania guyanensis*, represents a novel species complex? *PLoS One*. 2012;7(5):e37341. <https://doi.org/10.1371/journal.pone.0037341>
- Scarpassa VM, Cunha-Machado AS, Alencar RB. Multiple evolutionary lineages for the main vector of *Leishmania guyanensis*, *Lutzomyia umbratilis* (Diptera: Psychodidae), in the Brazilian Amazon. *Sci Rep*. 2021;11:1–17.
- Solano JJ, Wolff M, Castro LR. Identificación molecular de califóridos (Diptera: Calliphoridae) de importancia forense en Colombia. *Rev Colomb Entomol*. 2013;39:281–290.
- Stevens J, Wall R. Genetic relationships between blowflies (Calliphoridae) of forensic importance. *Forensic Sci Int*. 2001;120(1–2):116–123. [https://doi.org/10.1016/s0379-0738\(01\)00417-0](https://doi.org/10.1016/s0379-0738(01)00417-0)
- Theodorou P. The effects of urbanisation on ecological interactions. *Curr Opin Insect Sci*. 2022;52:100922. <https://doi.org/10.1016/j.cois.2022.100922>
- Tomberlin JK, Mohr R, Benbow ME, Tarone AM, Vanlaerhoven S. A roadmap for bridging basic and applied research in forensic entomology. *Annu Rev Entomol*. 2011;56:401–421. <https://doi.org/10.1146/annurev-ento-051710-103143>
- Whitworth T. Keys to the genera and species of blow flies (Diptera: Calliphoridae) of the West Indies and description of a new species of *Lucilia* Robineau-Desvoidy. *Zootaxa*. 2010;35:1–35.
- Whitworth T. A revision of the Neotropical species of *Lucilia* Robineau-Desvoidy (Diptera: Calliphoridae). *Zootaxa*. 2014;3810(1):1–76. <https://doi.org/10.11646/zootaxa.3810.1.1>
- Wolff M, Rivera C, Herrera S, Wolff JC, Escobar M. *Lucilia eximia* (Diptera: Calliphoridae), una nueva alternativa para la terapia larval y reporte de casos en Colombia. *Latreia*. 2010;25:107–116.
- Yusseff-Vanegas SZ, Agnarsson I. DNA-barcoding of forensically important blow flies (Diptera: Calliphoridae) in the Caribbean region. *PeerJ*. 2017;2017:e3516.
- Zehner R, Amendt J, Schütt S, Sauer J, Krettek R, Povolný D. Genetic identification of forensically important flesh flies (Diptera: Sarcophagidae). *Int J Legal Med*. 2004;118(4):245–247. <https://doi.org/10.1007/s00414-004-0445-4>